

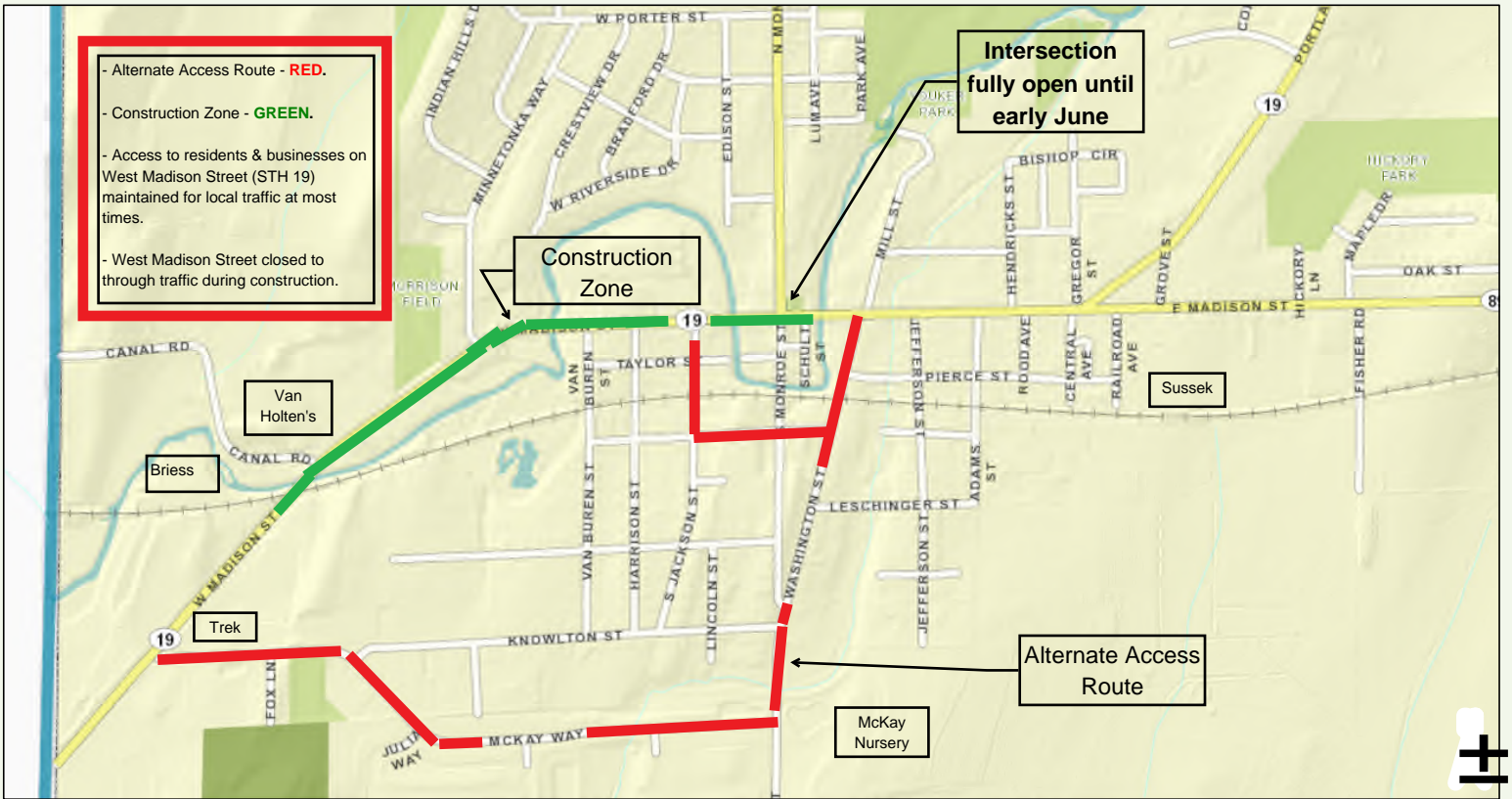
# Waterloo Local Access (4/28/2017)

- Alternate Access Route - **RED.**
- Construction Zone - **GREEN.**
- Access to residents & businesses on West Madison Street (STH 19) maintained for local traffic at most times.
- West Madison Street closed to through traffic during construction.

Intersection fully open until early June

Construction Zone

Alternate Access Route



Access to residents and businesses on West Madison Street & the 100/200 blocks of East Madison Street will be maintained for local traffic at most times.