



136 North Monroe Street
Waterloo, WI 53594
Phone: (920) 478-3025
Fax: (920) 478-2021
www.waterloowi.us

PUBLIC NOTICE OF A COMMITTEE MEETING OF THE CITY OF WATERLOO COMMON COUNCIL

Pursuant to Section 19.84 Wisconsin Statutes, notice is hereby given to the public and news media, that a public meeting will be held to consider the following:

COMMITTEE: FINANCE, INSURANCE & PERSONNEL COMMITTEE
DATE: November 21, 2024
TIME: 5:30 pm
LOCATION: Municipal Building Council Chamber, 136 N. Monroe Street

- 1) CALL TO ORDER AND ROLL CALL
- 2) APPROVAL OF MEETING MINUTES:
- 3) PUBLIC COMMENT
- 4) OLD BUSINESS
- 5) NEW BUSINESS
 - a) Fire Chief Review [NOTE: The Finance Committee may meet in closed session per Wis. Stat. 19.85(1)(c) "considering employment, promotion, compensation or performance evaluation data of any public employee over which the governmental body has jurisdiction or exercise responsibility. Upon concluding a closed session, the Committee will reconvene in open session.]
 - b) October 2024 Financial Statements: Payroll \$129,859.19, General Disbursements \$174,690.74 and Clerk/Treasurer's Reports [\[see on municipal website\]](#)
 - c) Resolution 2024-44 Resolution Approving the 2025 City of Waterloo Budget
 - d) Fire Department – Extrication Equipment and Sale of Fire Equipment – informational
 - e) Library Furnace Quotes
 - f) Lift Station at the Park Invoice from SJE
 - g) Police Department – Hiring Bonus for 2025 Police Hires
- 6) FUTURE AGENDA ITEMS AND ANNOUNCEMENTS
- 7) ADJOURNMENT

Jeanne Ritter
Clerk/ Deputy Treasurer

Committee Members: Thomas, Weihert and Kuhl

Posted, Emailed & Distributed: 11/15/2024.

PLEASE NOTE: It is possible that members of and possibly a quorum of members of other governmental bodies of the municipality may attend the above meeting(s) to gather information. No action will be taken by any governmental body other than that specifically noted. Also, upon reasonable notice, efforts will be made to accommodate the needs of disabled individuals through appropriate aids and services. For additional information or to request such services please contact the clerk's office at the above location.

CITY OF WATERLOO FINANCE, INSURANCE & PERSONNEL COMMITTEE: MEETING MINUTES

October 17, 2024

[a digital recording of this meeting also serves as the official record]

- 1) CALL TO ORDER AND ROLL CALL. Thomas called the meeting to order at 5:30 p.m. Members in person: Thomas, Weihert and Kuhl. Remote: none Absent: none. Others attending in person or remote: Mayor Quimby; Police Chief D. Sorenson; Chief Benisch; Treasurer L Nelson and Clerk Ritter.
- 2) APPROVAL OF MEETING MINUTES: September 30,2024. Motion [Kuhl/Weihert] VOICE VOTE: Motion carried.
- 3) PUBLIC COMMENT (3 Minute Time Limit) none
- 4) OLD BUSINESS
- 5) NEW BUSINESS

Motion to move into closed session [Weihert/Kuhl] ROLL CALL Y-3 N-0 Motion carried.

a) Personnel Discussion

Motion to move into open session [Kuhl/Weihert] ROLL CALL Y-3 N-0 Motion carried.

b) September 2024 Financial Statements: Payroll \$95,810.84, General Disbursements \$454,350.85 and Clerk/Treasurer's Reports [\[see on municipal website\]](#) Motion [Kuhl/Weihert] VOICE VOTE: Motion carried

c) 2025 Budget Discussion. Motion to approve Fire Department Budget including 1 new EMT. Motion [Kuhl/Weihert] VOICE VOTE: Motion carried.
- 6) FUTURE AGENDA ITEMS AND ANNOUNCEMENTS
- 7) ADJOURNMENT. MOTION: [Kuhl/Weihert] To adjourn. VOICE VOTE: Motion carried. Approximate time 6:51 pm.

Jeanne Ritter
Clerk/Deputy Treasurer

CITY OF
WATERLOO, WISCONSIN
2025 MUNICIPAL BUDGET
DELIBERATIONS

**Finance, Insurance &
Personnel Committee
Recommended Budget
-- Narrative --**

Lana Nelson, Treasurer

November 14, 2024

BUDGET DELIBERATION PROCESS

On July 23, 2024, Mayor Quimby issued budget parameters for the process:

CAPITAL PLAN SUBMITTAL DUE DATE. Department Heads are to submit a capital plan for at least the 2025-2029 period on or before August 9, 2024 (more out-years are welcomed). The plan consists of revisions to the existing plan. Capital expenditure will be the primary early focus of the budget process.

COMPLETE BUDGET SUBMITTAL DUE DATE. All Department Heads are to submit a complete 2025 budget submittal on or before August 9, 2024, to the Clerk/Treasurer's Office using the miViewPoint budgeting tool and other means provided.

GENERAL FUND BUDGET PARAMETERS. For the Clerk/Treasurer's Office, Mayor Office, Police Department, Public Works Department -- and other parts of the General Fund -- 2025 operational budget submittals are to be at, or below, the 2024 expenditure figure. NOTE: Expense for wages & benefits are excluded from the above calculation.

PROPERTY TAX LEVY TARGET. The 2025 municipal property tax levy target is: \$2,237,760. This figure is slightly lower than the 2024 tax levy.

WAGE RATE. The Waterloo Police Department wages under the union contract for 2025 as follows:
1/1/2025 3.5%
8/1/2025 1.5%

The 2025 wages for non-represented employees were based per department and ranged from 2% to 4%. There were two exceptions based on wage comparisons of municipalities in the surrounding areas.

GAS FUEL RATE FOR BUDGETING. The estimate of \$4.00 per gallon is to be used when calculating fuel purchase expenditures.

CONTRACTUAL OBLIGATIONS. Budget for contract items per the terms of the respective contract.

HEALTH INSURANCE BENEFIT. Submit budgets for health insurance benefits at the current year levels. Projected increases will be established as part of the overall deliberations.

The Finance, Insurance & Personnel Committee members (Alders Thomas, Kuhl and Weihert) met in public session on August 15th, September 23rd, September 25th, September 30th, October 10th, October 17th, October 23rd and October 29th. It reviewed department submittals, had a dialogue with department heads and received citizen input.

On October 29, 2024, the Committee recommended a 2025 budget for City Council consideration. A budget summary has been scheduled for publication in the official newspaper, the Courier, on November 8, 2024.

A public hearing is scheduled for November 21, 2024, at 7:00 pm in the Council Chambers. Council consideration will take place the same night. After a budget is approved, property tax bills will be prepared and mailed by mid-December.

MUNICIPAL FUNDS DESCRIBED

The General Fund (Fund 100) accounts for the bulk of municipal operations including legislative and general government, elections, property assessment, police administration & police patrol, building & zoning inspections & permit issuance, civil defense, public works and planning.

The General Fund along with the funds listed below represent the Governmental Funds maintained by the City of Waterloo.

Separate stand-alone funds exist to account for the specific revenues and expenditures of the following:

- 200 - CATV/WLOO Cable TV Stations. Charter cable television stations channels 991 and 992.
- 220 - Waterloo Fire Department Fund. Includes both operations and capital considerations for Waterloo Fire and Emergency Medical Services. The department serves the City of Waterloo and all, or a portion, of the Town of Waterloo, Town of Portland, Town of Shields and Town of Milford.
- 225 - Parks Special Revenue Fund. Includes all revenues & expenses for municipal parks, along with capital expenditure for parks.
- 300 - Debt Service Fund. Municipal debt excluding debt incurred by Waterloo Utilities.
- 400 - Capital Fund. Includes capital projects and equipment purchases for the departments in the General Fund.
- 402 - Special Assessment Fund. Maintains and tracks revenues and expenditures resulting from special assessment projects (typically sidewalk or other public infrastructure) approved by the City Council. Additionally, municipal loans to property owners for private lead service replacements are recorded and tracked in this fund.
- 412, 413, 414, 415 - Tax Incremental Districts 2-5. These funds maintain and track all new revenue (tax increment) and allowable expenditures for geographically distinct tax incremental finance districts created by the City Council. Each district has a statutory lifespan between 15 – 22 years.
- 600 - Community Development Authority. The Waterloo Community Development Authority (CDA) is charged with blight elimination and economic development functions. This fund receives revenue from the rental of the Mauneshia Business Center at 117 East Madison Street. Rental revenue is meant to cover recurring operational expenditures. The Waterloo City Band and the Waterloo-Marshall Food Pantry use the facility. No revenue is collected from the band or food pantry.
- 812 - Library Special Revenue Fund. Dedicated to the operations and facility care of the Karl Junginger Memorial Library.

Three City of Waterloo funds not covered here operate under the auspices of Waterloo Utilities (water, sewer and electric) represent the Proprietary Funds maintained by the City of Waterloo.

- Waterloo Utilities. The public utility owned by the City of Waterloo provides water, sewer and electric service within the City of Waterloo and water & sewer service to a portion of the Town of Portland. As part of its financial responsibilities, Waterloo Utilities maintains three separate funds to account for each of these services.

REVENUE HIGHLIGHTS

Municipal Vehicle Registration Fee. On September 5, 2024, the City Council voted to continue a \$15 per vehicle registration fee collected as part of the Wisconsin Department of Transportation vehicle registration process. The fee will generate an estimated \$47,000 annually which by state law would be dedicated to transportation improvements.

Municipal Borrowing. The budget for 2025 will call for borrowing due to upcoming road projects.

State Aids.

- Shared Revenue is slated to increase from \$449,157 to \$458,261.
- General Transportation Aid decreased from \$293,444 to \$290,591.
- DNR Recycling Aid is projected to remain at \$12,397.
- Supplemental Shared Revenue Aid for 2024 is \$93,000.
- State Computer Aid (TID 1) \$437,782
- LRIP Grant \$450,000 for 2025 Hendricks Street Project
- Jefferson County Road Aid – Program has ended in 2024.

EXPENDITURE HIGHLIGHTS

Police Department Staffing. The full-time Lieutenant position was filled in 2024. The 2025 budget has allocated wages, and all benefits associated to fill current open positions in 2025.

Employee Wages. The Finance, Insurance & Personnel Committee recommends the following:

- Wage increases for non-represented employees except for the Park Bartenders and Election Officials. Wages were determined by departments and based on a comparison of municipalities in surrounding areas.
- Employees covered under the collective bargaining agreement (Police Patrol Officers) will receive a 3.5% raise on 01/01/2025 and 1.5% on 08/01/25.

Employee Benefits. The City offers employees a health insurance benefit program administered through the State of Wisconsin Department of Employee Trust Funds. The employer pays 88% of the average premium costs of qualified Tier 1 health plans within Jefferson County. The City saw a 27% increase in premium costs for 2025.

Liability Insurance, Property Insurance and Worker's Compensation Insurance. Amounts vary across departments but in the aggregate insurance premiums for liability, property and worker compensation are not expected to increase. The arrival of new assets such as the new Fire Department Truck is an example of an anticipated increase.

Economic Development.

\$15,380 (25%) of the City Clerk's salary is an expense for Tax Incremental District No. 2.

The Economic Development Coordinator Contract was not renewed for 2025. A new service agreement is anticipated for 2025. A total of \$20,000 is split between TID 2 and TID 4. The amount has decreased from \$45,000 to \$20,000 effective 1/1/2025.

ADDITIONAL HIGHLIGHTS – BY FUND AND DEPARTMENTS

CATV (200). Revenues (Non-Tax) are \$51,993 for the 2025 budget year and expenses of \$49,641.

Waterloo Fire Department (220). The revenue tax share from each of the municipalities served (City of Waterloo, Town of Waterloo, Town of Portland, Town of Milford and Town of Shields). The distribution of the respective shares changed due to changes in the equalized value of property. For the 2025 budget the City of Waterloo tax share remained the same at from \$291,231.

The department has three full-time employees, with one added in 2024, and more than thirty paid volunteers. The department was approved to hire a 4th full-time employee in 2025.

The full-time employees voted to join a union and collective bargaining will be scheduled in 2025.

The Department annually sets aside dollars for major apparatus purchases. This sum decreased from \$55,000 to \$0 in 2025.

Parks Department – Revenue Fund (225). Proposed revenue decreased from \$391,057 to \$384,402 from the prior year. Expenditures are expected to increase from the budgeted \$391,057 to \$396,838. Computer Aid for capital projects \$105,000.

The department has a full-time Parks Coordinator, three part-time seasonal groundskeepers and seasonal bartenders.

Debt Service (300). Governmental fund debt service (non-Utility) is budgeted to pay principal of and interest of \$587,629. Revenue is transferred from tax incremental finance districts to this fund to specifically cover debt service incurred by the respective Districts. Taxes are levied to specifically cover debt service for capital projects.

Capital Projects (400). The proposed budget allocates \$332,782 of the remaining State Computer Aid, All General Transportation Aid, LRIP Grant, and Wheel Tax are dedicated to current and future capital projects.

Hendricks Street construction along with other improvements are planned for 2025. See the 5 Year Capital Plan (2025-2029) for current and future year department plans.

Special Assessment Fund (402). This fund tracks special assessments and lead loan program loans. No new special assessments are anticipated.

Tax Incremental District #2 (412). The revenue of \$138,943 is made up primarily of tax increment and fees paid in lieu of taxes from the Hawthorne & Stone and 575 West Madison Street. Top expenditures payments for Economic Development at an estimated \$10,000.

Tax Incremental District #3 (413). \$112,774 in revenue and \$122,573 in expense are projected, adding a net deficit of \$9,799. Expenditure is for debt service.

Tax Incremental District #4 (414). \$41,145 in Revenue. \$11,650 of Expenses. Top expenditures payments for Economic Development at an estimated \$10,000.

Tax Incremental District #5 (415). Created in 2023. No Revenue or expense numbers are available currently. The Tax Incremental Worksheet is to be completed in December 2024.

Community Development Authority (600). Projected revenue consists of tax levy and building rental fees. Expenditures are focused on the operation of the Maunsha Business Center at 117 East Madison.

Karl Junginger Memorial Library (812). The municipal contribution to this fund increased from 205,000 to 208,000 for 2025, along with Capital allocation of \$45,000 for replacement furnaces. This fund has an anticipated deficit of \$19,885, a figure which off-set by \$19,885 in applied fund balance brings the fund into balance.

DISCLAIMER

The full budget detail associated summaries and this narrative represents the full budget resolution going before the City Council for consideration. All documents are posted on the municipal website (www.waterloowi.us).



136 NORTH MONROE STREET, WATERLOO, WISCONSIN 53594-1198
Phone: (920) 478-3025
Fax: (920) 478-2021
E-Mail: cityhall@waterloowi.us
Website: www.waterloowi.us

RESOLUTION #2024-44

**ADOPTING AN ANNUAL BUDGET AND APPROPRIATING THE NECESSARY FUNDS FOR THE OPERATION OF
THE CITY OF WATERLOO, WISCONSIN, FOR THE YEAR 2025**

WHEREAS, it is necessary for the City of Waterloo to levy taxes and appropriate monies for expenditures;

BE IT RESOLVED that the following narrative, summary documents and detail documents are recommended by the Finance, Insurance & Personnel Committee and represent the entirety of the recommended 2025 budget for the City of Waterloo.

NOW, THEREFORE BE IT FURTHER RESOLVED, by the Common Council of the City of Waterloo that the Common Council adopts the proposed budget as submitted in summary and detail and hereby levies a tax of \$2,237,760.00 (with an additional levy amount for Tax Incremental District 2, 3 & 4 generated by DOR formula) for necessary purposes within the City of Waterloo for expenditures by the City of Waterloo for 2025. The said levy being distributed across the governmental funds as follows:

FUND DESCRIPTION		Levy
100	General	\$1,212,989
200	Cable TV	-
220	Fire & EMS	\$291,231
225	Parks	\$122,047
300	Debt Service	\$401,373
400	Capital	-
402	Special Assessment	-
600	Community Development	\$2,120
812	Library	\$208,000
Non-TID Total		\$2,237,760

Passed and adopted this ____ day of November 2024.

City of Waterloo

Jenifer Quimby, Mayor

Attest:

Jeanne M Ritter, Clerk/Deputy Treasurer

SPONSOR(S) – Finance Insurance & Personnel Committee with a proposed amendment submitted by the Clerk/Treasurer at this time

FISCAL NOTES – See narrative, summary and detail documents

NOTICE IS HEREBY GIVEN that on Thursday, November 21, 2024, at 7:00 p.m. in the Council Chambers of the Municipal Building, a public hearing on the proposed City of Waterloo budget will be held. The proposal, in detail, is available for inspection at the City Clerk's Office from 8:00 a.m. to 4:30 p.m. on Monday through Friday. More information available at www.waterloowi.us.

CITY OF WATERLOO - 2025 PROPOSED BUDGET - AS PROPOSED
General Fund

Revenue Descriptions:	2024 Budget	2024 Projected	2025 Budget Proposed	Budget % Change
Taxes (Other than Property Taxes)	\$ 252,000	\$ 248,224	\$ 251,500	0%
Intergovernmental Revenue	563,417	560,283	619,895	10%
Licenses & Permits	41,244	38,759	35,754	-13%
Fines & Forfeitures	17,100	20,103	19,000	11%
Public Charges for Service	202,395	201,887	216,150	7%
Miscellaneous Revenues	130,798	281,734	175,500	34%
Other Financing Sources	35,000	32,217	35,000	0%
Total Revenues	\$ 1,241,954	\$ 1,383,207	\$ 1,352,799	9%

Expenditure Descriptions:	2024 Budget	2024 Projected	2025 Budget Proposed	Budget % Change
General Government	\$ 480,974	\$ 458,208	\$ 531,753	11%
Public Safety	1,163,190	1,041,795	1,185,040	2%
Public Works	790,534	765,039	782,344	-1%
Health & Human Services	6,082	5,582	6,082	0%
Culture, Recreation & Education	6,650	4,815	-	-100%
Conservation & Development	-	6,024	5,569	-
Other Financing Uses	35,000	32,217	55,000	57%
				-
Total Expenditures	\$ 2,482,431	\$ 2,313,681	\$ 2,565,788	3%
				-
Excess(Deficiency) of Revenues	\$ (1,240,477)	\$ (930,474)	\$ (1,212,989)	-2%
Over Expenditures				-
				-
Surplus Funds Applied	-	-	-	-
				-
Local Property Taxes (General Fund Only)	1,240,477	1,240,477	1,212,989	-2%
				-
Net Surplus (Deficit)	\$ 0	\$ 310,003	\$ (0)	

CITY OF WATERLOO - 2025 BUDGET ALL FUNDS - AS SUBMITTED

10/30/2024 19:11

All Governmental and Proprietary Funds Combined

2025 Dept. Submittal									
Finance Comm. Deliberations									
Fund #	Fund Name	ESTIMATED 12/31/2024	Revenues	Expenditures	Rev > Exp	Fund Balance Applied	2025 Budget Yr Property Taxes	2024 Curr Yr Property Taxes	% Change
100	General Fund	\$1,280,127	\$2,565,788	\$2,565,788	\$0		\$1,212,989	\$1,240,477	-2.22%
200	Cable TV Fund	\$42,945	\$51,993	\$49,641	\$2,352			\$0	0.00%
220	Waterloo Fire & EMS Dept. Fund	\$787,245	\$706,701	\$1,060,123	(\$353,422)	\$ 353,422	\$291,231	\$291,231	0.00%
225	Special Revenue Fund - Parks	\$98,919	\$339,402	\$351,838	(\$12,436)	\$ 12,436	\$122,047	\$113,018	7.99%
300	Debt	\$0	\$587,629	\$587,629	\$0		\$401,373	\$422,586	-5.02%
400	Capital Projects Fund	\$838,970	\$2,557,997	\$2,557,997	\$0			\$0	0.00%
402	Special Assessments	\$1,173	\$1,605		\$1,605	\$ -		\$0	0.00%
412	TIF District No. 2 Fund	\$143,508	\$138,943	\$32,530	\$106,412		\$51,857	\$49,956	3.81%
413	TIF District No. 3 Fund	\$34,868	\$112,774	\$122,573	(\$9,799)	\$ 9,799	\$74,902	\$52,000	44.04%
414	TIF District No. 4 Fund	\$52,950	\$41,145	\$11,650	\$29,495		\$52,273	\$36,000	45.20%
415	TIF District No. 5 Fund	\$0	\$0	\$0	\$0				
600	Community Development Authority	\$5,070	\$5,120	\$3,960	\$1,160		\$2,120	\$2,120	0.00%
650	Contingency Fund	\$32,217	\$20,000	\$55,000	\$0	\$ 35,000			
812	Special Revenue Fund - Library	\$265,505	\$396,610	\$416,495	(\$19,885)	\$ 19,885	\$208,000	\$205,000	1.46%
	Waterloo Utilities	\$16,954,836	\$7,697,713	\$6,885,151	\$812,562			\$0	
	TOTALS	\$20,538,333	\$15,223,419	\$14,700,375	\$558,044	\$395,542	\$2,416,792	\$2,412,388	0.18%
NOTES: as provided by Dept. Heads; FC actions with data from Waterloo Utilities					\$ -				

		Revenues	Expenditures
100	GENERAL FUND BREAKDOWN	\$2,565,788	
	Clerk		\$589,934
	Mayor		\$8,470
	Police		\$1,185,040
	Public Works		\$782,344



Jeanne Ritter

From: 1 Lieutenant
Sent: Wednesday, November 13, 2024 9:07 AM
To: Jeni Quimby; Tim Thomas; Charles Kuhl; Rich Weihert; Jeanne Ritter
Subject: Surplus sale and purchases.
Attachments: 20241113092015783.pdf; 20241113092353995.pdf; 20241113092304422.pdf

2008 Chevy Silverado is out of service due to broke suspension and when we had it quoted out for repair we were advised that the frame was beyond repair due to rusting and having multiple holes in the frame, was advised it is not worth fixing and the engine having a bad tick in it.

With the sale of Squad 76, Car 86, Frieghtliner Chassis, Extrication tools and other small items. We would like to put this forward to a brush truck.

We are working on getting solid numbers as of right now we have some numbers

2025 Ford F350 \$50,600

Paint job \$8,000

Flat bed \$7,000

Aggressive off roads tires \$1,500

Still looking at getting quotes for decals, install for emergency lights, radio install and siren.

We will be using the radio that came out of C86 with the lights, the fire skid from B84.

We will still be using B84 due to that truck is not good for off road and it would still be pulling the UTVs and we would be using it for utility truck, ice rescue and other means that are needed.

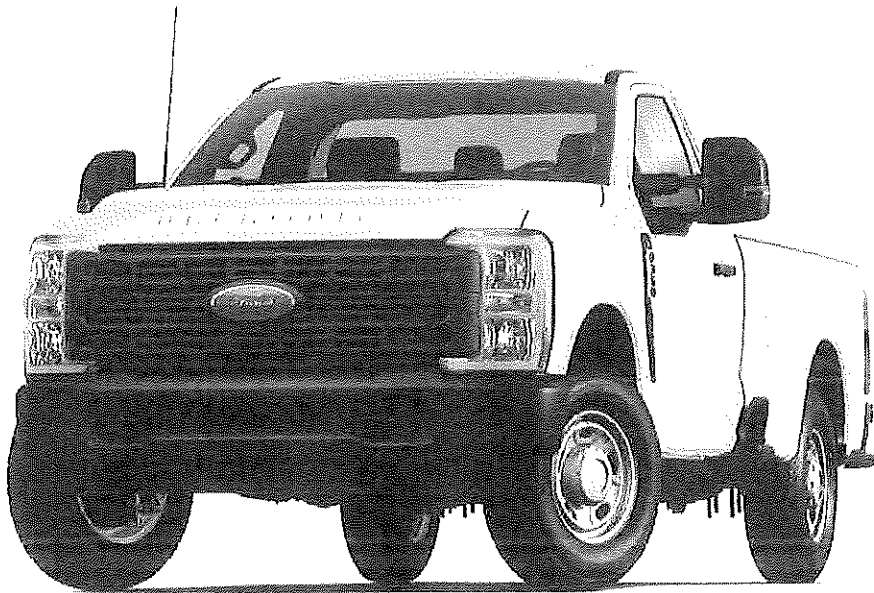
Please let me know if you have any further questions. Otherwise, I will see you all next Thursday.

Lt. Jason Butzine
Waterloo Fire Rescue
900 Industrial Lane
Waterloo, WI 53594
920-478-2535
1lt@waterloowi.us

Prepared for: , Waterloo Fire and Rescue
900 Industrial Drive
Waterloo, WI 53594
Office: 920-478-2535

2025

~~2024~~ F-350 4x4 SD Regular Cab 8' box 142" WB SRW XL (F3B)
Price Level: ~~400~~



Client Proposal

Prepared by:
Tim Askey
Office: 608-276-0253
Quote ID: TA-100224A
Date: 10/07/2024



Kayser Commercial Sales | 2303 W Beltline Highway, Madison, Wisconsin, 53713
Office: 608-276-0253

Prepared for:

Waterloo Fire and Rescue

Prepared by: Tim Askey

10/07/2024

Kayser Commercial Sales | 2303 W Beltline Highway Madison Wisconsin | 53713



2025 2024 F-350 4x4 SD Regular Cab 8' box 142" WB SRW XL (F3B)

Price Level: 430 | Quote ID: TA-100224A

Pricing Summary - Single Vehicle

57,750.00

- 7,150.00

Vehicle Pricing

Total

50,600.00

Customer Signature

Acceptance Date

Prices and content availability as shown are subject to change and should be treated as estimates only. Actual base vehicle, package and option pricing may vary from this estimate because of special local pricing, availability or pricing adjustments not reflected in the dealer's computer system. See salesperson for the most current information.

Prepared for:

Waterloo Fire and Rescue

Prepared by: Tim Askey

10/07/2024

Kayser Commercial Sales | 2303 W Bellline Highway Madison Wisconsin | 53713



2024 F-350 4x4 SD Regular Cab 8' box 142" WB SRW XL (F3B)

Price Level: 430 | Quote ID: TA-100224A

As Configured Vehicle

Code		Description
Base Vehicle		
F3B		Base Vehicle Price (F3B)
Packages		
610A		Order Code 610A <i>Includes:</i> - Radio: AM/FM Stereo w/MP3 Player Includes 4 speakers. - SYNC 4 Includes 8" LCD capacitive touchscreen with swipe capability, wireless phone connection, cloud connected, Applink with app catalog, 911 Assist, Apple CarPlay and Android Auto compatibility and digital owner's manual.
Powertrain		
99N	1000.00	Engine: 7.3L 2V DEVCT NA PFI V8 Gas <i>Includes:</i> - Electronic-Locking w/3.73 Axle Ratio
44G		Transmission: TorqShift 10-Speed Automatic <i>Includes SelectShift and selectable drive modes: normal, eco, slippery roads, tow/haul and off-road.</i>
X3E		Electronic-Locking w/3.73 Axle Ratio
NONGV3		GVWR: 11,400 lb Payload Package
Wheels & Tires		
TDX		Tires: LT275/70R18E BSW A/T (4) <i>Spare may not be the same as road tire.</i> <i>Includes:</i> - GVWR: 11,400 lb Payload Package
64S		Wheels: 18" Ebony Black Painted Aluminum
Seats & Seat Trim		
1		Cloth 40/20/40 Split Bench Seat <i>Includes center armrest, cupholder, storage and driver's side manual lumbar.</i>
Other Options		
142WB		142" Wheelbase

Prices and content availability as shown are subject to change and should be treated as estimates only. Actual base vehicle, package and option pricing may vary from this estimate because of special local pricing, availability or pricing adjustments not reflected in the dealer's computer system. See salesperson for the most current information.

Prepared for:

Waterloo Fire and Rescue

Prepared by: Tim Askey

10/07/2024

Kayser Commercial Sales | 2303 W Beltline Highway Madison Wisconsin | 53713



2024 F-350 4x4 SD Regular Cab 8' box 142" WB SRW XL (F3B)

Price Level: 430 | Quote ID: TA-100224A

As Configured Vehicle (cont'd)**Code****Description**

PAINT

Monotone Paint Application

STDRD

Radio: AM/FM Stereo w/MP3 Player

*Includes 4 speakers.**Includes:**- SYNC 4**Includes 8" LCD capacitive touchscreen with swipe capability, wireless phone connection, cloud connected, Apple link with app catalog, 911 Assist, Apple CarPlay and Android Auto compatibility and digital owner's manual.*

17S

5115.⁰⁰

STX Appearance Package

*Includes 4 pickup box tie-down plates, STX fender vent badge and upgraded interior door panels.**Includes:**- 360-Degree Camera Package**Includes wired auxiliary trailer camera compatibility.**- 360-Degree Camera System**Includes picture in picture capability.**- BLIS w/Cross-Traffic Alert**Includes trailer coverage.**- LED Center High-Mounted Stop Lamp (CHMSL) Camera**Includes LED center high-mounted stop lamp (CHMSL).**- Rear Parking Sensors**Includes reverse sensing system with reverse brake assist.**- Automatic High Beam**- Pre-Collision Assist**Includes Automatic Emergency Braking (AEB) and forward collision warning.**- Body-Color Front Bumper**- Body-Color Rear Bumper**- Cloth 40/20/40 Split Bench Seat**Includes center armrest, cupholder, storage and driver's side manual lumbar.**- Color-Coordinated Full Carpet w/Floor Mats**- LED Box Lighting**Includes LED Center High-Mounted Stop Lamp (CHMSL).**- LED Fog Lamps**Includes LED reflector lamps.**- Painted Grille**- Wheels: 18" Ebony Black Painted Aluminum**- Tires: LT275/70R18E BSW A/T (4)**Spare may not be the same as road tire.**- GVWR: 11,400 lb Payload Package*

17X

495.⁰⁰

FX4 Off-Road Package

*Includes:**- Hill Descent Control**- Off-Road Specifically Tuned Shock Absorbers**Includes front/rear.**- Transfer Case & Fuel Tank Skid Plates**- Unique FX4 Off-Road Box Decal*

473

250.⁰⁰

Snow Plow Prep Package

Prices and content availability as shown are subject to change and should be treated as estimates only. Actual base vehicle, package and option pricing may vary from this estimate because of special local pricing, availability or pricing adjustments not reflected in the dealer's computer system. See salesperson for the most current information.

Prepared for:

Waterloo Fire and Rescue

Prepared by: Tim Askey

10/07/2024

Kayser Commercial Sales | 2303 W Beltline Highway Madison Wisconsin | 53713



2024 F-350 4x4 SD Regular Cab 8' box 142" WB SRW XL (F3B)

Price Level: 430 | Quote ID: TA-100224A

As Configured Vehicle (cont'd)**Code****Description**

874

360-Degree Camera Package

Includes wired auxiliary trailer camera compatibility.

Includes:

- 360-Degree Camera System
Includes picture in picture capability.
- BLIS w/Cross-Traffic Alert
Includes trailer coverage.
- LED Center High-Mounted Stop Lamp (CHMSL) Camera
Includes LED center high-mounted stop lamp (CHMSL).
- Rear Parking Sensors
Includes reverse sensing system with reverse brake assist.

86M

Dual 68 AH/65 AGM Batteries

67B

410 Amp Dual Alternators

Includes 250 Amp + 160 Amp.

66L

LED Box Lighting

Includes LED Center High-Mounted Stop Lamp (CHMSL).

43C

120V/400W Outlet

Includes 1 in-dash mounted outlet.

Fleet Options

WARANT

Fleet Customer Powertrain Limited Warranty

Requires valid FIN code.

Ford is increasing the 5-year 60,000-mile limited powertrain warranty to 5 years, 100,000 miles. Only Fleet purchasers with a valid Fleet Identification Number (FIN code) will receive the extended warranty. When the sale is entered into the sales reporting system with a sales type fleet along with a valid FIN code, the warranty extension will automatically be added to the vehicle. The extension will stay with the vehicle even if it is subsequently sold to a non-fleet customer before the expiration. This extension applies to both gas and diesel powertrains. Dealers can check for the warranty extension on eligible fleet vehicles in OASIS. Please refer to the Warranty and Policy Manual section 3.13.00 Gas Engine Commercial Warranty. This change will also be reflected in the printed Warranty Guided distributed with the purchase of every new vehicle.

Emissions

425

50-State Emissions System

Prices and content availability as shown are subject to change and should be treated as estimates only. Actual base vehicle, package and option pricing may vary from this estimate because of special local pricing, availability or pricing adjustments not reflected in the dealer's computer system. See salesperson for the most current information.

Prepared for:

Waterloo Fire and Rescue

Prepared by: Tim Askey

10/07/2024

Kayser Commercial Sales | 2303 W Beltline Highway Madison Wisconsin | 53713



2024 F-350 4x4 SD Regular Cab 8' box 142" WB SRW XL (F3B)

Price Level: 430 | Quote ID: TA-100224A

As Configured Vehicle (cont'd)

Code

Description

Exterior Color

Z1_01

Oxford White

Prices and content availability as shown are subject to change and should be treated as estimates only. Actual base vehicle, package and option pricing may vary from this estimate because of special local pricing, availability or pricing adjustments not reflected in the dealer's computer system. See salesperson for the most current information.



Jason Butzine - CM Truck Bed Request

From Richard <richard@sleepyhollowauto.com>

Date Fri 9/13/2024 9:22 AM

To 1 Lieutenant <1lt@waterloowi.us>

Jason,

Thanks for the conversation this morning. I have attached a price for an 8'6 CM ALRD bed for a SRW pick-up.

Let me know how we can help!

Thank you!

Quotation

QUOTE DATE 9/13/2024

QUOTE NUMBER

Customer Name/ID

Phone (608) 638-7569 - **Checks Payable to: Sleepy Hollow

Fax (608) 638-7577 - **Like/Visit us on Facebook: Sleepy Hollow Truck Center & Auto Glass

Customer: Quotation valid until: 9/27/2024

Fire Department Jason Butzine Prepared by:

920-478-2535 Richard Clements

Waterloo, WI 1lt@waterloowi.us truckman@sleepyhollowauto.com

or richard@sleepyhollowauto.com

cell 608-498-2025

Comments or Special Instructions:

Year	Make	Model	Cab Type	Stock #
2024	Ford	F350	REG	
Single/Dual	CA	Wheelbase	F.O #	Last 6 of vin
SINGLE	56			

QUANTITY	DESCRIPTION	UNIT PRICE	TAXABLE?	AMOUNT
1	CM ALRD 8'6/84	\$6,100.00		\$6,100.00
1	install w rear mudflaps	849.00		849.00

*****IMPORTANT*****

*****additional shipping may apply on bed shipped separate \$600 plus. *****Any extra parts and materials charges may apply *****Any bed on order is subject for price changes if factory pricing changes *****Prices are quoted as of date quoted, any supply price changes that apply once ordered or delivered may apply

SUBTOTAL \$6,949.00

TAX RATE

Client approval to proceed w build: X_____

SALES

TAX

Print Name:_____ DATE:_____

OTHER -

TOTAL \$6,949.00

If you have any questions concerning this quotation please call.

Thank You! - - Richard Clements

Richard Clements
Sales - Truck Center & Fleet, Commercial

Sleepy Hollow Auto Group

Chevy, Buick, GMC | Chrysler, Dodge, Jeep, RAM | Ford

Sleepy Hollow Commercial Truck Center

1308 N Main St. | Viroqua, WI 54665
C: 608.498.2025 | P: 608.638.7569 x 519 | Fax: 608.637.3152

We upfit your truck right here! Like us on Facebook at Sleepy Hollow Truck Center & Auto Glass

Dealer: CM Truck Beds (www.cmtruckbeds.com), | Rugby dump beds (www.rugbymfg.com), | BOSS (www.bosspow.com), | Buyer Products (www.buyersproducts.com)

email: richard@sleepyhollowauto.com | truckman@sleepyhollowauto.com | www.sleepyhollowauto.com

----- Forwarded Message -----

From: notification@dealer.com <notification@dealer.com>

Date: On Friday, September 13th, 2024 at 6:36 AM

Subject: CM Truck Bed Request

To: richard@sleepyhollowauto.com <richard@sleepyhollowauto.com>

> -----
> Do not reply to this email. Login to ControlCenter (<http://apps.dealer.com/welcome>) to open this lead.
> -----

>
> Source: Truck Center CM Beds Location: Sleepy Hollow Auto Group
> Submission Date: 09/13/24 at 6:36 AM
>

> --- Customer Information ---

> First Name: Jason
> Last Name: Butzine
> Phone: 9204782535
> Email: 1lt@waterloowi.us
> Preferred Contact Method: email
> Postal Code: 53563
>

> --- Comments ---

> I am with the Waterloo Fire Rescue Department and looking to get a quote on a CM flat bed for a 2025 flat bed AL RD
>

> --- Additional Information ---

> Submission Timestamp: 2024-09-13T11:36:21
> Pixall ID: REvhfcggTEqf6l2exfEltrZu
> devicePlatformLeadTag: desktop
>

> --- Click Path ---

> 09/13/24 at 6:32 AM <https://www.sleepyhollowauto.com/>
> 09/13/24 at 6:32 AM <https://www.sleepyhollowauto.com/new-inventory/index.htm>
> 09/13/24 at 6:32 AM <https://www.sleepyhollowauto.com/>
> 09/13/24 at 6:32 AM <https://www.sleepyhollowauto.com/truck-center-cm-beds.htm>
> 09/13/24 at 6:36 AM Submitted Form: sleepyhollowautogroup_contact_1



BUDGET TRUCK & AUTO, INC

Collision Repair | Custom Paint | Vehicle Wraps |
Vinyl Graphics | Paint Protection
2027 W AVALON RD, JANESVILLE, WI 53546
Phone: (608) 756-0861
FAX: (608) 756-0136

Workfile ID: 9dcdb264
PartsShare: 8bD5wX
Federal ID: 39-1719220

Estimate

RO Number:

Customer:	Insurance:	Adjuster:	Estimator:	Susie Carman
WATERLOO FIRE DEPARTMENT		Phone:	Create Date:	10/10/2024
900 INDUSTRIAL LN		Claim:		
WATERLOO, WI 53597		Loss Date:		
(920) 478-2535		Deductible:		

2024 FORD Super Duty F-350 w/Dual Rear Wheels XLT Regular Cab & Chassis 169" WB 84" 4WD 2D P/U 8-7.3L Gasoline Sequential MPI

VIN: 1FDRF3HN8RDA30680	Interior Color:	Mileage In:	Vehicle Out:
License:	Exterior Color:	Mileage Out:	
State:	Production Date:	Condition:	Job #:

Line	Ver	Operation	Description	Qty	Extended Price \$	Part Type	Labor	Type	Paint
1	E01		FRONT BUMPER						
2	E01	Remove/Install	R&I bumper assy				1.8	Body	
3	E01		GRILLE						
4	E01	Remove/Install	Grille assy molded black				1.0	Body	
5	E01		FRONT LAMPS						
6	E01	Remove/Install	RT R&I headlamp assy				0.0	Body	
7	E01	Remove/Install	LT R&I headlamp assy				0.0	Body	
8	E01	Remove/Replace	Aim headlamps			OEM	0.5	Body	
9	E01		HOOD						
10	E01	Remove/Install	R&I hood assy				1.0	Body	
11	E01	Refinish	Hood (ALU)						3.2
12	E01		Add for Clear Coat						1.3
13	E01		Add for Underside(Complete)						1.6
14	E01		FENDER						
15	E01	Remove/Install	RT R&I fender assy				2.4	Body	
16	E01	Remove/Install	LT R&I fender assy				2.4	Body	
17	E01	Remove/Install	RT Fender liner XLT, w/o 6.7L diesel				0.0	Body	
18	E01	Remove/Install	LT Fender liner XLT, w/o 6.7L diesel				0.0	Body	
19	E01	Remove/Install	RT Nameplate "F-350 XLT" w/o Sport pkg				0.0	Body	
20	E01	Remove/Install	LT Nameplate "F-350 XLT" w/o Sport pkg				0.0	Body	
21	E01	Remove/Replace	Clean & re-tape mldg(s)	1	10.00	Other	0.2	Body	
22	E01	Remove/Replace	Clean & re-tape mldg(s)	1	10.00	Other	0.2	Body	
23	E01	Refinish	RT Fender (ALU)						2.6
24	E01		Overlap Major Adj. Panel						(0.4)

T = Taxable Item, RPD = Related Prior Damage, AA = Appearance Allowance, UPD = Unrelated Prior Damage, PDR = Paintless Dent Repair, A/M = Aftermarket, Rechr = Rechromed, Reman = Remanufactured, OEM = New Original Equipment Manufacturer, Recor = Re-cored, RECOND = Reconditioned, LKQ = Like Kind Quality or Used, Diag = Diagnostic, Elec = Electrical, Mech = Mechanical, Ref = Refinish, Struc = Structural

10/10/2024 10:41:16 AM

Estimate

RO Number:

2024 FORD Super Duty F-350 w/Dual Rear Wheels XLT Regular Cab & Chassis 169" WB 84" 4WD 2D P/U 8-7.3L Gasoline Sequential MPI

25	E01		Add for Clear Coat					0.4
26	E01		Add for Edging					0.5
27	E01	Refinish	LT Fender (ALU)					2.6
28	E01		Overlap Major Adj. Panel					(0.4)
29	E01		Add for Clear Coat					0.4
30	E01		Add for Edging					0.5
31	E01		ELECTRICAL					
32	E01	Remove/Install	Antenna mast			0.1	Body	
33	E01		WHEELS					
34	E01	Remove/Install	LT/Front R&I wheel			0.2	Body	
35	E01	Remove/Install	LT/Rear R&I wheel			0.2	Body	
36	E01	Remove/Install	RT/Front R&I wheel			0.2	Body	
37	E01	Remove/Install	RT/Rear R&I wheel			0.2	Body	
38	E01	Refinish	LT/Front Wheel, alloy 6 spoke 64S black painted					1.2
39	E01	Refinish	LT/Rear Wheel, alloy 6 spoke 64S black painted					1.2
40	E01	Refinish	RT/Front Wheel, alloy 6 spoke 64S black painted					1.2
41	E01	Refinish	RT/Rear Wheel, alloy 6 spoke 64S black painted					1.2
42	E01		MOUNT AND BALANCE X4	1	100.00	Other		
43	E01		WINDSHIELD					
44	E01	Remove/Install	Windshield Ford XLT			2.8	Body	
45	E01		CAB					
46	E01	Remove/Install	Roof lamp assy outer			0.2	Body	
47	E01	Remove/Install	Roof lamp assy inner			0.2	Body	
48	E01	Remove/Install	R&I headliner			0.0	Body	
49	E01	Remove/Install	RT Roof molding			0.5	Body	
50	E01	Remove/Install	LT Roof molding			0.5	Body	
51	E01	Remove/Install	Back panel			0.7	Body	
52	E01	Remove/Install	RT Running board black			0.7	Body	
53	E01	Remove/Install	LT Running board black			0.7	Body	
54	E01	Refinish	RT Aperture panel (ALU)					5.2
55	E01		Overlap Major Non-Adj. Panel					(0.2)
56	E01		Add for Clear Coat					1.0
57	E01	Refinish	LT Aperture panel (ALU)					5.2
58	E01		Overlap Major Adj. Panel					(0.4)
59	E01		Add for Clear Coat					1.0
60	E01	Refinish	Cowl top panel (ALU)					1.4
61	E01		Overlap Major Non-Adj. Panel					(0.2)
62	E01		Add for Clear Coat					0.2
63	E01		FRONT DOOR					
64	E01	Remove/Install	RT R&I door assy			1.0	Body	
65	E01	Remove/Install	LT R&I door assy			1.0	Body	

T = Taxable Item, RPD = Related Prior Damage, AA = Appearance Allowance, UPD = Unrelated Prior Damage, PDR = Paintless Dent Repair, A/M = Aftermarket, Rechr = Rechromed, Reman = Remanufactured, OEM = New Original Equipment Manufacturer, Recor = Re-cored, RECOND = Reconditioned, LKQ = Like Kind Quality or Used, Diag = Diagnostic, Elec = Electrical, Mech = Mechanical, Ref = Refinish, Struc = Structural

10/10/2024 10:41:16 AM

Estimate

RO Number:

2024 FORD Super Duty F-350 w/Dual Rear Wheels XLT Regular Cab & Chassis 169" WB 84" 4WD 2D P/U 8-7.3L Gasoline Sequential MPI

66	E01	Remove/Install	RT Applique regular cab w/o keyless pad			0.3	Body	
67	E01	Remove/Install	LT Applique regular cab w/o keyless pad			0.3	Body	
68	E01	Remove/Install	RT Belt molding w/o chrome pkg					
69	E01	Remove/Install	LT Belt molding w/o chrome pkg					
70	E01	Remove/Install	RT R&I mirror			0.4	Body	
71	E01	Remove/Install	LT R&I mirror			0.4	Body	
72	E01	Remove/Install	RT Handle, outside black			0.7	Body	
73	E01	Remove/Install	LT Handle, outside black			0.7	Body	
74	E01	Remove/Install	RT R&I trim panel			0.6	Body	
75	E01	Remove/Install	LT R&I trim panel			0.6	Body	
76	E01	Remove/Install	RT W'strip on body			0.4	Body	
77	E01	Remove/Install	LT W'strip on body			0.4	Body	
78	E01	Remove/Install	RT Lower w'strip regular cab			0.3	Body	
79	E01	Remove/Install	LT Lower w'strip regular cab			0.3	Body	
80	E01	Remove/Install	RT Door glass Ford XL, XLT			0.4	Body	
81	E01	Remove/Install	LT Door glass Ford XL, XLT			0.4	Body	
82	E01	Remove/Install	RT Run channel			0.2	Body	
83	E01	Remove/Install	LT Run channel			0.2	Body	
84	E01	Remove/Install	RT Window regulator			0.4	Body	
85	E01	Remove/Install	LT Window regulator			0.4	Body	
86	E01	Refinish	RT Door shell (ALU)					2.6
87	E01		Overlap Major Adj. Panel					(0.4)
88	E01		Add for Clear Coat					0.4
89	E01		Add for Edging					0.5
90	E01		Add for Inside					0.5
91	E01	Refinish	LT Door shell (ALU)					2.6
92	E01		Overlap Major Adj. Panel					(0.4)
93	E01		Add for Clear Coat					0.4
94	E01		Add for Edging					0.5
95	E01		Add for Inside					0.5
96	E01		BACK GLASS					
97	E01	Remove/Install	Back glass Ford, w/o heated glass green tint NOTE: LABOR: Time is after headliner, back seat and back panel are removed.			1.9	Body	
98	E01		MISCELLANEOUS OPERATIONS					
99	E01	Sublet	Hazardous waste removal	1	5.00	Other		
100	E01	Remove/Replace	Cover Car	1	15.00	Other	0.5	Body
101	E01	Refinish	Color tint / color match					0.5
102	E01	Remove/Replace	Corrosion protection primer	1	12.00	Other	0.2	Body
103	E01		Clean Vehicle for Repair/Delivery				0.0	UD4
104	E01		Pre Scan	1	60.00	Other	0.5	Mech
105	E01		POST SCAN	1	129.95	Other	0.5	Mech
106	E01		SHOP SUPPLIES	1	250.00	Other		

Estimate Totals	Discount \$	Markup \$	Rate \$	Total Hours	Total \$
-----------------	-------------	-----------	---------	-------------	----------

T = Taxable Item, RPD = Related Prior Damage, AA = Appearance Allowance, UPD = Unrelated Prior Damage, PDR = Paintless Dent Repair, A/M = Aftermarket, Rechr = Rechromed, Reman = Remanufactured, OEM = New Original Equipment Manufacturer, Recor = Re-cored, RECOND = Reconditioned, LKQ = Like Kind Quality or Used, Diag = Diagnostic, Elec = Electrical, Mech = Mechanical, Ref = Refinish, Struc = Structural

10/10/2024 10:41:16 AM

Page 3

Estimate

RO Number:

2024 FORD Super Duty F-350 w/Dual Rear Wheels XLT Regular Cab & Chassis 169" WB 84" 4WD 2D P/U 8-7.3L Gasoline Sequential MPI

Parts			559.95
Labor, Body	77.00	28.7	2,209.90
Labor, Refinish	77.00	38.0	2,926.00
Labor, Mechanical	97.00	1.0	97.00
Detail		0.0	0.00
Material, Paint	57.00	38.0	2,166.00
Miscellaneous			32.00
Subtotal			7,990.85
Sales Tax			0.00
Grand Total			7,990.85
Net Total			7,990.85

Estimate Version	Total \$
Original	7,990.85

Insurance Total \$:	0.00
Received from Insurance \$:	0.00
Balance due from Insurance \$:	0.00
Customer Total \$:	7,990.85
Received from Customer \$:	0.00
Balance due from Customer \$:	7,990.85

Estimate pricing is only valid for 30 days.

A 5% processing fee will be added to any invoice for a credit card payment over \$3,000.

T = Taxable Item, RPD = Related Prior Damage, AA = Appearance Allowance, UPD = Unrelated Prior Damage, PDR = Paintless Dent Repair, A/M = Aftermarket, Rechr = Rechromed, Reman = Remanufactured, OEM = New Original Equipment Manufacturer, Recor = Re-cored, RECOND = Reconditioned, LKQ = Like Kind Quality or Used, Diag = Diagnostic, Elec = Electrical, Mech = Mechanical, Ref = Refinish, Struc = Structural

10/10/2024 10:41:16 AM

Page 4



Action Plumbing, Heating, Air Conditioning & Electric, Inc.
899 S. Bird Street, Sun Prairie, Wisconsin 53590
(608) 837-3638

BILL TO

Karl Junginger Memorial Library - Billable-E
625 North Monroe Street
Waterloo, WI 53594 USA

ESTIMATE
128304432

ESTIMATE DATE
Oct 29, 2024

JOB ADDRESS

Karl Junginger Memorial Library
625 North Monroe Street
Waterloo, WI 53594 USA

Job: 128057536

ESTIMATE DETAILS

KARL JUNGINGER MEMORIAL LIBRARY : INSTALL NEW LENNOX FURNACES. HOOK TO EXISTING DUCT SYSTEMS, TWIN KITS AND ECONOMIZERS. PROVIDE DRAIN PANS AND WET SWITCHES TO PROTECT ATTIC MECHANICAL ROOM FROM WATER DAMAGE. INSTALLATION INCLUDES NEW DRAIN LINES, PVC HOOK UP AND SHEET METAL TRANSITIONS.

10 YEAR COMMERCIAL HEAT EXCHANGER WARRANTY

5 YEAR COMMERCIAL PARTS WARRANTY

2 YEAR LABOR WARRANTY

SERVICE	DESCRIPTION	QTY	PRICE	TOTAL
1	Proposal: INSTALL 6 FURNACES 1- ML196UH045XE36B 4- ML196UH090XE48C 1-ML196UH070XE36B ALL FURNACES ARE 96% AFUE SINGLE STAGE NAT GAS FURNACES WITH CONSTANT TORQUE BLOWER MOTORS.	1.00	\$41,000.00	\$41,000.00
2	Proposal: INCLUDES NEW HONEYWELL COMMERCIAL THERMOSTATS.	1.00	\$0.00	\$0.00

POTENTIAL SAVINGS	\$0.00
SUB-TOTAL	\$41,000.00
STATE TAX 5%	\$0.00
JEFFERSON COUNTY TAX 0.5%	\$0.00
TOTAL	\$41,000.00
EST. FINANCING	\$369.00

Thank you for choosing Action Plumbing, Heating, Air Conditioning & Electric, Inc.

CUSTOMER AUTHORIZATION

THIS IS AN ESTIMATE, NOT A CONTRACT FOR SERVICES. The summary above is furnished by Action Plumbing, Heating, Air Conditioning & Electric, Inc. as a good faith estimate of work to be performed at the location described above and is based on our evaluation and does not include material price increases or additional labor and materials which may be required should unforeseen problems arise after the work has started. I understand that the final cost of the work may differ from the estimate, perhaps materially. THIS IS NOT A GUARANTEE OF THE FINAL PRICE OF WORK TO BE PERFORMED. I agree and authorize the work as summarized on these estimated terms, and I agree to pay the full amount for all work performed.

Sign here

Date



Cardinal Heating, Cooling, Plumbing, Electric
3361 Brooks Drive
Sun Prairie, WI 53590
(608) 837-9367
HVAC and Electrical LIC #4033
Master Plumber LIC #6164700

BILL TO

Karl Junginger Memorial Library
625 North Monroe Street
Waterloo, WI 53594 USA

ESTIMATE
164190584

ESTIMATE DATE
Sep 19, 2024

JOB ADDRESS

Karl Junginger Memorial Library
625 North Monroe Street
Waterloo, WI 53594 USA

Job: 163189406

ESTIMATE DETAILS

Estimate: Replacement of the remaining 6 furnaces

SERVICE	DESCRIPTION	QTY	PRICE	TOTAL
CUSFDHVAC	<p>Installation of</p> <ul style="list-style-type: none">• (4) Armstrong Air A961E single stage 90,000 BTU Furnace• (1) Armstrong Air A961E single stage 45,000 BTU Furnace• (1) Armstrong Air A961E single stage 70,000 BTU Furnace• (2) I/O Twinning Kits <p><u>Includes:</u></p> <p>(4) Armstrong Air A96UH1E090 96% efficient furnace with the following features</p> <p>(1) Armstrong Air A96UH1E045 96% efficient furnace with the following features</p> <p>(1) Armstrong Air A98UH1E970 96% efficient furnace with the following features</p> <p>(2) I/O Twinning Kits</p> <p><u>Installation also includes:</u></p> <ul style="list-style-type: none">• Removal & Recycling of existing equipment• All necessary ductwork transitions• Connecting of gas piping & Venting to new furnace• Connecting of drain piping for new furnace• Proper start up & commissioning of new furnace• All necessary permits• Labor	1.00	\$42,000.00	\$42,000.00

Warranty Armstrong Air's commitment to a better product is backed

by a Limited Lifetime Warranty on the stainless steel heat exchanger and a 1-Year Limited Warranty on parts.
Cardinal's commitment to a better installation is backed by a 1 year labor warranty

**** Cardinal is not responsible for any drywall, paint or plaster repairs. ****

SUB-TOTAL	\$42,000.00
------------------	-------------

TOTAL	\$42,000.00
--------------	-------------

CUSTOMER AUTHORIZATION

I authorize the work in the amount of \$42,000.00 to be performed. This includes entering my home for the purpose of assessing the required work. If work beyond our initial agreement is identified, we will go over any adjustments to costs or the project timeline beforehand. I understand and agree that no extra work will commence in my home without approval.

Payment Due Upon Completion

Sign here

Date



**Jensen
Plumbing
Heating & Air
Inc**

204 W Lake St
Lake Mills WI
53551
(920) 648-8373

PROPOSAL

PROPOSAL #	1053969118
DATE	11/05/2024
PROPOSAL CREATED BY	KENNY KENNY@JENSENPH.COM

Providing 24/7 Reliable Quality Service

SERVICE LOCATION	CUSTOMER
KARL JUNGINGER MEMORIAL LIBRARY 625 N MONROE ST WATERLOO, WI, 53594 (920) 478-3344 KMOUNTFORD@WATERLOO.LIB.WI.US	KARL JUNGINGER MEMORIAL LIBRARY KELLI MOUNTFORD 625 N MONROE ST WATERLOO, WI, 53594 (920) 478-3344 KMOUNTFORD@WATERLOO.LIB.WI.US

PAYMENT TERMS	50% DOWNPAYMENT, REMAINDER OF BALANCE DUE UPON COMPLETION OF WORK	EXPIRATION	PROPOSAL PRICING IS GOOD FOR 30 DAYS FROM 10/23/2024
------------------	--	------------	---

CARRIER TP6

Description

Furnace Replacements

Replacement of the 6 existing Lennox furnaces. The old furnaces will be removed and recycled. The new furnaces will be reinstalled in the same locations as the old. We will reconnect to the existing supply and return ductwork as well as the pvc exhaust, intake piping and electrical. All necessary sheet metal alterations will be fabricated. The new furnaces will carry a commercial 1-year part and labor warranty. After completion the new furnaces will be properly started and tested.

Carrier Performance Series 59TP6 100K Gas Furnace X4

Carrier Infinity Series 59MN7 60K Gas Furnace X1

Carrier Infinity Series 59MN7 80K Gas Furnace X1

CUSTOMER MESSAGE

Thank you for having us out.
Signed proposal and down payment are required to schedule.
WE OFFER FINANCING SEE EMAIL OR JENSENPHA.COM WEBSITE
TO LEARN MORE

Estimate Total: \$32,623.00

Terms and Conditions

1. Project Completion Timeline: The project must be completed within one year from the date of acceptance by the customer of this proposal ("Acceptance Date"). Delays caused by the customer may result in additional charges for storage or rescheduling. If the project is not completed within one year of the Acceptance Date, a 2% monthly fee will apply to the remaining balance for the storage of products held.
2. Material Selection: Materials used in the project will be specified in this proposal and, if not specified, the assigned technician will select the materials to be used.
3. Special Order Items: Special order items are non-refundable and non-returnable. The customer is responsible for full payment of these items at the time of the Acceptance Date. (if job is canceled, the special order item will be required to be picked up by the client within 15 business days or Jensen will dispose of the special order item).
4. Scope of Work and Change Orders: The scope of work is set forth as detailed in this proposal. Any additional work requested by the customer outside the scope of work will be set forth in a written change order signed by the customer, and the change order shall list the additional work, materials, and corresponding charges.
5. Downpayment: Customer shall pay to Jensen Plumbing, Heating & Air, Inc. ("Jensen") the down payment according to the payment terms as described on page 1 of the proposal. Jensen will not order materials or schedule work until the downpayment amount is paid. Customers may choose to pay more than required downpayment of the proposal amount at their discretion. The remaining balance is due upon completion of the work, unless otherwise specified in writing. If, upon customer request, the project is delayed beyond 120 days after the proposed start date, payment terms will convert to progressive billing, requiring payments as work progresses.
6. Overdue Payments and Enforcement: All outstanding payments are due at project completion, unless otherwise specified in the proposal or an invoice. All overdue balances will incur monthly interest at the rate of 1.5%. In the event Jensen retains legal counsel to enforce the terms and conditions of the accepted proposal, customer shall reimburse Jensen for the actual attorneys' fees and costs incurred in pursuing such enforcement.
7. Price Validity: Due to fluctuations in the prices of materials and other market conditions, all pricing outlined in this proposal is valid for thirty (30) days after the proposal date. If the signed proposal and downpayment are not received by Jensen within the 30-day period, this proposal is deemed void.
8. Restocking Fee: A 30% restocking fee applies to cancellations of standard materials if customer cancels 30 days after the Acceptance Date.
9. Customer-Supplied Materials: Materials provided by the customer or third parties are not covered under Jensen's warranty.
10. Permits and Compliance: Plumbing and HVAC permits are not included in this proposal unless explicitly stated herein. The customer is responsible for obtaining all necessary permits and paying all associated fees and costs.
11. Lien Rights: As required by the Wisconsin construction lien law, claimant hereby notifies owner that persons or companies performing, furnishing, or procuring labor, services, materials, plans, or specifications for the construction on owner's land may have lien rights on owner's land and buildings if not paid. Those entitled to lien rights, in addition to the undersigned claimant, are those who contract directly with the owner or those who give the owner notice within 60 days after they first perform, furnish, or procure labor, services, materials, plans or specifications for the construction. Accordingly, owner probably will receive notices from those who perform, furnish, or procure labor, services, materials, plans, or specifications for the construction, and should give a copy of each notice received to the mortgage lender, if any. Claimant agrees to cooperate with the owner and the owner's lender, if any, to see that all potential lien claimants are duly paid.
12. Workmanship Guarantee: Jensen guarantees that all work performed will comply with the applicable codes and regulations of the state of Wisconsin. Jensen is committed to completing all work in a workmanlike manner.
13. Business Hours: All work will be conducted during regular business hours of 7 AM to 4 PM, Monday through Friday (excluding observed Holidays). Additional charges may apply for work performed outside these hours.
14. Delays: Jensen is not liable for delays caused by events beyond its control, including strikes, natural disasters, supply chain issues, and supply shortages.
15. Insurance: Jensen carries appropriate and required insurance for all employees. The customer is responsible for maintaining appropriate insurance coverage for their property.
16. Time and Material Rate: Time and Material hourly rate is \$128, per technician plus any materials used. (Time and Material rates are subject to change without notice) (Example: If concrete is over 4 inches thick or contains re-bar or wire mesh, removal will be billed on a time and material basis.)
17. JENSEN PLUMBING HEATING AND AIR, INC. RESERVES THE RIGHT TO CANCEL THIS PROPOSAL AT ANYTIME PRIOR TO RECEIPT OF THE ACCEPTED PROPOSAL.

ACCEPTANCE OF PROPOSAL

SIGNATURE :

DATE:



Invoice

Original

Invoice Date:
10/29/24

Invoice Number:
CD99547580

Order Date:
10/29/24

Order Number:
W105614

Our Reference:
Josh Reindl

Tax Identity:

Customer Number:
21505

Reference:

Invoice Address:

Waterloo, WI Utilities
575 Commercial Ave
Waterloo, WI 53594
US - UNITED STATES OF AMERICA (THE)

Delivery Address:

Waterloo, WI Utilities
575 Commercial Ave
Waterloo, WI 53594
US - UNITED STATES OF AMERICA (THE)

Ship Via:
Best Way

APPROVED
NOV 04 2024

Terms of Delivery:
FOB Origin

Due Date:
11/28/24

PLEASE REMIT PAYMENT TO:
22650 County Hwy 6, Detroit Lakes, MN 56501

Terms of Payment:
Net 30 Days

Pos	Part Number Description Customer Part No	Sales Quantity	Price	Net Amount in USD
1	1083561 Phantom Antenna 902-928 Mhz 3 Db-Meg Antenna Permanent Mount	1.00	64.68	64.68
2	1084664 Cable Assembly, N Male To TNC Male, 48"	1.00	40.86	40.86
3	ELEC SENIOR SERVICE Electrical Senior Service Labor	2.00	162.00	324.00
4	MILEAGE mileage	52.00	0.92	47.84
5	1058958 RADIO,ORBIT-ECR,UNLICENSED,10-60VDC,902-928 MHZ	1.00	1,957.34	1,957.34

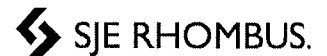
Sub Total: 2,434.72

Total Excluding Tax: 2,434.72

Total Tax: 0.00

Invoice Amount to Pay: 2,434.72

Past due balances may be subject to a finance charge of 1.5% per month; 18% per annum.





Invoice

Invoice Date:

Invoice Number:

Order Date:

Our Reference:

Tax Identity:

Customer Number:

Reference:

Pos	Part Number	Sales Quantity	Price	Retainage %	Retainage Amt	Net Amount in USD
	Description					
	Customer Part No					

WORK DESCRIPTION

1. Communication issues at the Park LS.

WORK PERFORMED

1. Replaced radio, antenna and cable at Park LS. Signal strength was at a -91 RSSI now -53 RSSI, which is where it had been previously. JOSHR 10/10/2024

