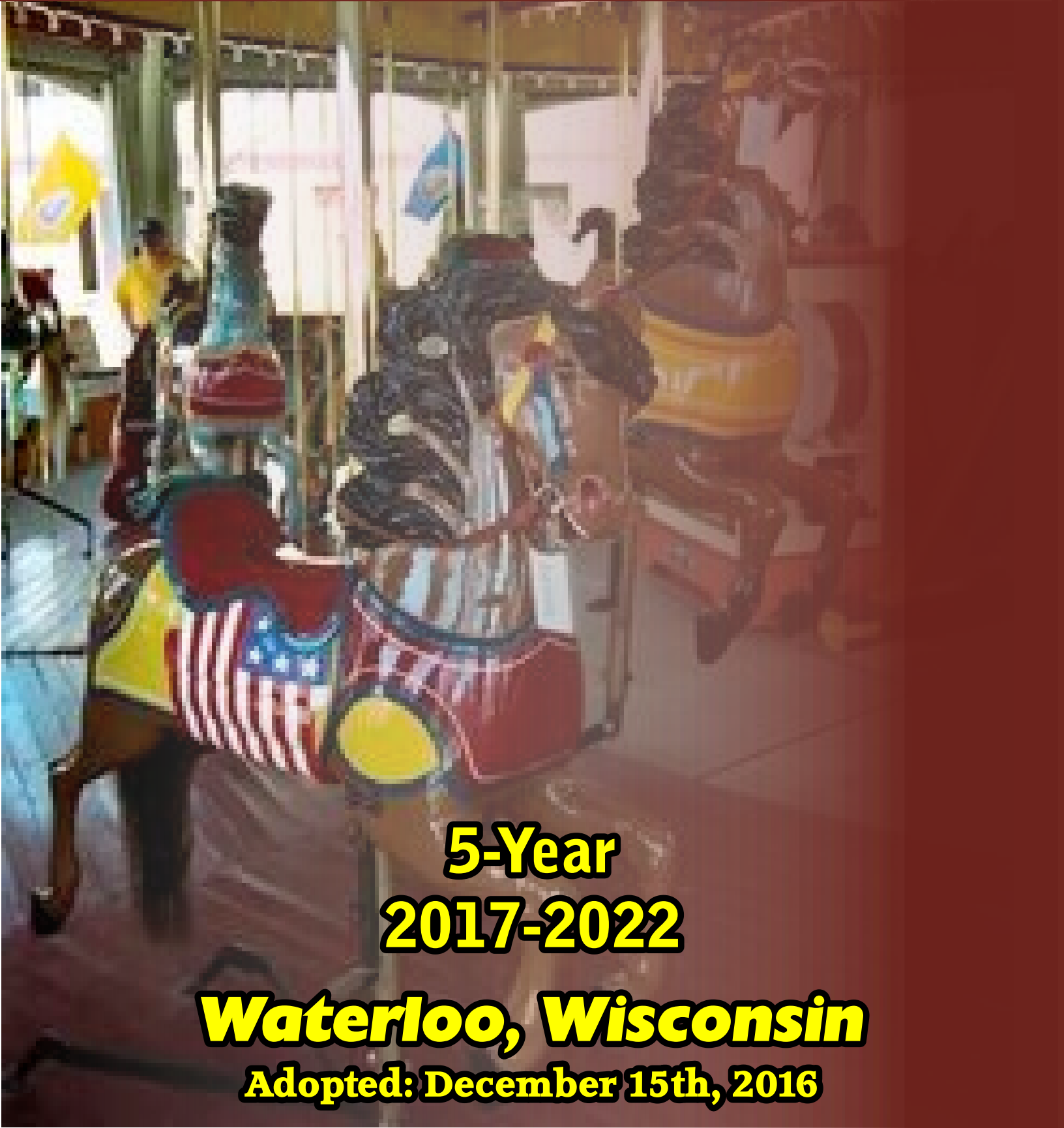


# **CITY OF WATERLOO**

## **Comprehensive Outdoor Recreation Plan**



**5-Year  
2017-2022**

**Waterloo, Wisconsin**

**Adopted: December 15th, 2016**

## **Plan Contributors**

### **City Officials**

Bob Thompson - Mayor

William Springer - Alderperson Ward 2

Jeanette Petts - Alderperson Ward 4-5

Jenifer Quimby - Alderperson at Large

Matthew J. Ziaja - Alderperson Ward 1

Tim Thomas – Alderperson Ward 3

Angie Stinnett - Alderperson at Large

Ron Griffin - Alderperson at Large

### **Parks Commission**

Craig Strobel-Fire Dept. Bd. of Trustees

Tim Kopplin- Citizen Representative

Angie Stinnett - Council Representative

Al Kegler - Citizen Representative

Jenifer Quimby -Waterloo School Board Representative

### **Parks Commission -- Ex Officio Members**

Gary Yerges - Public Works Director

Charles Crave & Dick Jones - Waterloo Regional Trailhead Implementation Team

Shannon Koele- Waterloo Youth Sports Organization

### **Waterloo School District**

Brian Henning- District Administrator

Maureen Adams - Elementary School Principal

Shannon Karcher- Intermediate/Middle School Principal/Special- Ed

Director Brad Donner - High School Principal (9-12)

### **City Staff**

Gabe Haberkorn- Waterloo Parks Coordinator

Gary Yerges - Public Works Director

Mo Hansen- Clerk/Treasure

Austin Kuhl – Waterloo Parks Intern (UW-Oshkosh)

<b>TABLE OF CONTENTS</b>	<b>PAGE</b>
Executive Summary	4
Goals and Objectives	5
Definitions	6
Planning Process	9
Summary of Past CORP Plan	9
Description of the Planning Region	10
Outdoor Recreation/Natural Resources Inventory	10
Outdoor Recreation Facility Inventory	11
Accessibility for Persons with Disabilities	14
Outdoor Recreation Needs Standards	14
Recommendations for Outdoor Recreation Provisions	15
2017-2022 Action Program	16
Expansion of Parks Program	17
Operation and Maintenance	18
Funding Programs	18
Summary	18

<b>APPENDIX</b>	<b>PAGE</b>
Waterloo Map of Park and Green space	
Park Facility Matrix	19
Park Facility Poster	20
Connectivity Plan	21-25
Waterloo Parks Inventory & Analysis Maps	26-31
Firemen's Park	26
Waterloo Regional Trailhead	27
Morrison Field	28
Veteran's Memorial Park	29
Youker Park	30
DeYoung Farms	31
Future Waterloo Parks	32-36
South Side Park	32
Indian Hills Nature Area	33
720 W. Madison Street	34
River Side Park	35
Public Power Park	36
Waterloo Area Parks Maps	37-39
Garman Nature Preserve	37
Holzhueter State Park	38
Waterloo Wildlife Area	39

# EXECUTIVE SUMMARY

## 2017 – 2022 Goals and Objectives

- 1. FIREMEN’S PARK:** Utilizing space and venues to create personal interaction among community members, while making Fireman’s Park the epicenter of all community gatherings. Fund and implement a Capital Improvement Plan to modernize the park while keeping the “nostalgia” that it holds in place.
- 2. WATERLOO REGIONAL TRAILHEAD:** Fund and implement a phased nature based outdoor recreation program operations/activities plan in partnership with local and regional project supporters.
  - 2017: Fundraise, Rentals and Educational Opportunities
  - 2018: Fundraise and set up facility, install interactive displays, organize initial programs, plantings & signage (phase 1).
  - 2019: Fundraise for recurring expenses, playground & install playground, plantings & signage, install interpretive kiosks, additional programming.
  - 2020: Complete outdoor amenities, continue programming, and fundraise for recurring expenses & special projects, building regional support.
  - 2021-2022: Continue facility fundraising & programming.
- 3. STAFFING:** Identify recurring sustainable funding to support a Parks Coordinator responsible for all parks; Park Cleaning and Seasonal personnel provided through tax levy dollars and park revenue dollars; a Naturalist Intern for outdoor recreational/educational activities focused at the Waterloo Regional Trailhead provided by fundraising efforts and park revenue dollars.
- 4. PARK MAINTENANCE:** Seek adequate funding for existing parkland maintenance.
- 5. NEW PUBLIC SPACES & BIKE ROUTES IN CONCERT WITH ECONOMIC DEVELOPMENT AND POPULATION GROWTH:** Develop park space and public space along the Mauneshia River including 720 West Madison Street, 333 West Madison Street, Riverside Park, Power Plant Park, South Side Park, Morrison Field, Indian Hills and Youker Park and establish a Dog Park in Firemen’s Park between the Mauneshia River pedestrian bridge and the Wastewater Treatment Plant. Also prepare for bike and pedestrian routing opportunities resulting from Jefferson County grant applications for a Waterloo to Watertown bike route.



# GOALS AND OBJECTIVES

Through a comprehensive public outreach campaign and active discussions with the City of Waterloo Parks Commission and city staff, a detailed list of goals and objectives were developed for the Comprehensive Outdoor Recreation Plan. Along with our main goal of bringing the community together within our park system, these goals and objectives are our main goals for the public.

- Provide and maintain active and passive recreational lands to meet current and future recreational needs
- Ensure that parklands are designed to meet the special needs of all residents
- Update the CORP plan to Wis. DNR standards
- Adequately fund parkland maintenance and future park facility development and create excitement and awareness for the Waterloo Parks
- Promote all Waterloo Parks in addition to Firemen's Park
- Use available resources to further enhance the quality of the City's park system
- Reduce general city maintenance of parklands and green space
- Develop an implementation strategy for parkland improvements and restructuring
- Bring a more graphic approach to the CORP to increase fundraising abilities
- Develop strong community support and increase user frequency
- Create more diverse uses and programs for the park system
- Develop and design pedestrian and bike trail system through the city connecting all parks
- Promote resident support and involvement in the development, improvement and maintenance of the City's parks and open spaces
- Provide residents with safe and reliable recreation equipment throughout the City park system
- Provide adequate management and staffing to oversee park and open space maintenance.

# DEFINITIONS

County, state and federal agencies have quite varied and extensive recreation and resource protection responsibility. Although these recreation elements are used as a guide, community agencies are most often concerned with meeting local daily recreation needs that provide a variety of park settings which serve all age and user groups within the local community. The following selected definitions of types of parks are those considered most appropriate for the City of Waterloo.

## Parkland Classifications

Parkland classification is determined by the Wisconsin Statewide Comprehensive Outdoor Recreation Plan (SCORP) standards and by the City of Waterloo. The following are the City of Waterloo's general guidelines for parkland classifications.

### **Mini Parks**

Summary: A play lot or playground providing space for parental supervised recreation of toddlers and young children within a neighborhood, or as part of a larger neighborhood or community park and urban center, including retail shopping area.

Size: 0.5 to 2 acres

Amenities: Generally include sand play areas, play apparatus, play equipment and other special child-oriented features.

### **Neighborhood Park**

Summary: A neighborhood park, by size, program, and location, provides space and recreation activities for the immediate neighborhood in which it is located. It is considered an extension of neighborhood residents' "out-of-yard" and outdoor use area.

Size: 1-25 acres

Amenities: Compatible with the neighborhood setting and park site constraints. Generally includes the following facilities, which are determined with public input as to use and activities:

- Parking (10 – 20 vehicles)
  - Restrooms
  - Tot lot/ Children's Play
  - Family/ Group Picnic Facility
  - Informal Picnic Area with Benches and Tables
  - Unstructured Turf Grass Play Area or Practice Field
  - Sports Facilities: Basketball, Volleyball, Softball/Baseball Field, Tennis Courts, Ice Skating, or
- Additional Features
- Efforts should be made to allow easy pedestrian access to the park

### **Community Park**

Summary: A community park, by size, program, and location, provides space and recreation activities for a defined service area, the entire city, or significant geographic segment of the city's population.

Size: 5 – 150 acres

Amenities: Compatible with the neighborhood setting and park site constraints. Generally includes the following facilities, which are determined with public input as to use activities:

- Off-street Parking
- Restrooms
- Community Recreation Center
- Park Maintenance and Equipment Storage
- Tot lot/ Children's Play
- Family/ Group Picnic Shelters
- Informal Picnic Area with Benches and Tables
- Unstructured Turf Grass Play Area or Practice Field
- Sports Facilities May Include: Basketball, Volleyball, Softball/Baseball Field, Tennis Courts, Ice Skating, Jogging Trails, Concessions, Football or Additional Features.

### **Special Use Park**

Summary: A special use park satisfies a demand for a particular sport, recreational activity, or special event. A special use park may also be a sports park combined with enterprise activities and administered as a community recreation resource.

Size: Determined by size available and program

Amenities: Special use parks require facility programming that is based on community needs and may include:

- Bandstand/ Amphitheater
- Memorial Features
- Water Play Park
- Festival/Swap Meet/Farmers Market
- League/Individual Sports Complex
- Fitness/Entertainment Center
- Skateboard/In-Line Hockey Park
- Recreation Programs and Classes
- Youth/Community Center

### **School Park**

Summary: School park sites complement other community recreation or open lands. The important outcome in the joint-use relationship is that both the school district and park system benefit from shared use of facilities and land area.

Size: Varies, dependent on school. Waterloo Comprehensive Outdoor Recreation Plan 2014

**Amenities:** Typically used for neighborhood and community recreation services. The functions may include sports, recreation classes, passive recreation activities, and other recreation programs suitable for an elementary or secondary education school.

### **County Park/State Park**

**Summary:** County and State parks consist of land that is specifically set aside for active and passive recreation uses, and have the ability to accommodate large gatherings, special events, or individual users. County and State parks offer a wide variety of compatible outdoor recreation activities. In addition, these parks may provide areas that do not primarily serve a recreational purpose such as protected natural areas, historic areas, and special use areas.

**Size:** Varies

**Amenities:** Recreation Trails, Hiking, Picnic Areas, Native American Burial Mounds

### **Nature/Conservation Area**

**Summary:** Nature/conservation areas compliment the park system by providing active and passive recreation in natural environments.

**Size:** Determined by size of lands available

**Amenities:** Generally determined by terrain, topography and vegetation ecosystems, which may include

- Recreational trails (hiking, bicycling, mountain biking, cross-country ski, etc.)
- Picnic areas
- Wildlife observation
- Vegetation studies
- Fishing access

### **Specialized Recreation Areas**

Golf courses, historic sites, and conservancy areas are examples of specialized recreation areas. Most of these have limited active recreation value, are undeveloped for recreation, or are not always available for use by the public. Such areas were not considered in the initial evaluation of recreation needs for Waterloo. However, recent encroachments along the Mauneshia River and of the many scenic vistas around the community have increased the need to protect these valuable natural resources. In addition, other changes have occurred that illustrate the need for the protection, enhancement, and perpetuation of such elements that reflect the City's cultural, social, architectural and geological history.

### **Other Recreation Facilities**

Waterloo is fortunate to have numerous non-park recreational facilities. The indoor swimming pool at Waterloo High School is available year round for recreational swimming. Tennis courts and a weight room are also available at the high school. The new bike trail/route allows safe travel across the city from east to west.

# PLANNING PROCESS

A three phased planning process was developed to complete the Comprehensive Outdoor Recreation Plan. The first phase focused on understanding the physical assets and constraints of the individual Park or green space areas. Site visits, gathering base map information and reviewing past planning documents greatly impacted the design and program for each area. The Waterloo Parks Commission desired a strong voice to come from the school district. An interactive workshop was held that allowed students to draw on base maps and create typical designs for what they desired in a park. Through an active series of meetings with the Waterloo Parks Commission, a public open house, a month long community survey and numerous stakeholder interviews, a program was developed for each existing park and new park locations were identified to accommodate future growth of the city.

Once the first phase of investigation and park programming was completed, design alternatives that incorporated the desired park program were developed for each park area. Design alternatives included concept plans, typical cross sections, and sketches to convey design intent. Accompanying the concept plans were estimates of probable cost, developed to aid in the decision making process. Preliminary recommendations were presented to the Parks Commission to be reviewed and revised. From this, the preferred plans were further revised and presented at an open house for public comment.

For proper completion of the Comprehensive Outdoor Recreation Plan update, direction came from the Parks Commission presentation and the Public Survey. Revisions to individual green space and park area plans and revisions to the estimates of probable cost were completed and incorporated into the final CORP. Research was completed to identify potential funding sources for park improvements. The existing CORP text was revised and updated to reflect these new recommendations. The final Comprehensive Outdoor Recreation Plan was organized to be a more graphic document to provide a valuable planning tool for the future development of Waterloo's park system.

## SUMMARY OF PAST CORP PLAN

The first plan completed by the Department of Natural Resources in 1972, inventoried the supply of recreation areas and evaluated their adequacy. Recommendations for action to eliminate those deficiencies were outlined. The 1972 plan was subsequently updated in 1979, 1988, 1996, 2001 and 2008. Whereas, many of these recommendations have since been implemented, the City realizes that several changes have occurred affecting the recreation needs within the community. The Parks Commission, Community Survey and the newly created position of Parks Coordinator are incorporated into the new plan.

This report is not only an update of the first six plans, but also includes some considerations not previously discussed. The plan begins with definitions of types of recreation areas and proceeds to an inventory of Waterloo's current supply of recreation areas and standards for evaluating their adequacy. Comparison of existing park acreage, facilities, and locations with those needed in the community is the basis for identifying deficiencies, which should be corrected. The concluding section consists of recommendations for action to eliminate present deficiencies, it is hoped that this coverage and organization of the plan content will provide a clear framework for community efforts to meet daily outdoor recreation requirements, protect resources and provide a more desirable community environment.

# DESCRIPTION OF THE PLANNING REGION

## **Historic / Social**

Waterloo has an interesting heritage and unlike many communities has been able to maintain many of the nineteenth and early twentieth century residential and commercial buildings. These buildings are relatively unaltered and the overall quality of a rural village is well preserved. To date, the City has undertaken only minor historic preservation efforts. The Wisconsin State Historical Society has established a downtown historical district and a copy of the National Register report can be obtained at Waterloo's City. Secondly, due to the hard work of many Waterloo citizens, Waterloo's Carousel has too been inducted into the Wisconsin State Historical Society. Fortunately, a local historical society has been formed and has purchased the old St. Joseph's Church, which has been converted into a museum to display local history. Another effort underway is the continued indexing system designed to trace the history of the community.

## **Population Projections**

From 1972 to 1980, Waterloo experienced a slow but steady increase in residents. Since 1980, the City grew to 2,712 in 1990 and a 3,259 population in 2000. As of 2017 the City of Waterloo population is 3,371 residents. Based on current economic trends, it is projected that the population of Waterloo will reach 3,835 by the year 2015. This projection is based on the continued implementation of current zoning and subdivision regulations dictating residential densities.

## **Population Projections 2016-2022**

Year:        2016 - 3,371 / 2022 – 3,500

# OUTDOOR RECREATION/NATURAL RESOURCES INVENTORY

The following are descriptions of natural resource areas available to residents of Waterloo for recreational purposes.

## **Garman Nature Preserve**

The Dr. J.S. Garman Nature Preserve is a unique place that provides public access to a 40 acre wooded tract within the City of Waterloo. The Garman Nature Preserve's woodlands, extend west and south of the property for a total wooded area of 54.2 acres. The preserve is located on one of the highest hills in northwestern Jefferson County, at over 980 feet in elevation. The northwest hillside is particularly steep with slopes of over 35 percent for short distances.

The Preserve has two unique features making it a special landscape, not only for the City of Waterloo, but also for Jefferson County. The first feature has more than twenty Indian burial mounds, located along the eastern ridgeline of the drumlin within the Preserve. Indian burial mounds are protected by the Wisconsin Burial Sites Law. These mounds are a sacred site for Native Americans and may still contain burials. Jefferson County intends to work with the Ho-Chunk Nation to stabilize and preserve the mounds and to create educational opportunities on Native American culture and the Indian burial mounds. The second feature is the yellow giant hyssop (*AgastacheNepetoides*), a plant species on the Wisconsin State Threatened list.

Jefferson County is required by law to protect the yellow giant hyssop and cannot destroy plants through construction or activities in the Preserve. The yellow giant hyssop is a savanna indicator species, meaning it is

usually found in areas that once supported a savanna ecosystem. Remnant savanna communities are extremely rare today. Many parts of Jefferson County were covered with savanna or oak openings prior to the mid-1800s.

### **Mauneshia River**

The Mauneshia River is a 33.5 mile-long tributary of the Crawfish River in south-central Wisconsin. The Mauneshia winds through The City of Waterloo, creating many opportunities for urban and natural water recreation within the city limits.

### **Glacial Heritage Area**

The Glacial Heritage Area is a coordinated series of parks, preserves, wildlife, natural areas, and other conservation lands within Jefferson County. These lands are linked together to nearby cities and villages through various types of trail networks. These networks, also called “string and pearls”, will provide readily accessible opportunities for residents and visitors to positively utilize the environment through activities such as; hiking, wildlife observation, fishing, paddling, hunting, camping, cross country skiing, riding horses, and participation in other nature-based activities.

### **Waterloo DNR Wildlife Area/Holzhueter State Park**

The wildlife area is approximately one mile east of the City of Waterloo in northwestern Jefferson County and southwestern Dodge County. Encompassing approximately 4,000 acres, the Waterloo DNR Wildlife Area and Holzhueter State Park offer a diverse range of vegetative habitat types. These habitat types include open water marsh, sedge meadow, fens (including a state natural area), lowland and upland hardwoods, some native prairie and extensive Shrub Carr ecosystem.

## **OUTDOOR RECREATION FACILITY INVENTORY**

Below is an inventory of all the outdoor recreation facilities available to the residents of Waterloo.

### **City Parks and School Facilities**

#### **Firemen's Park - 500 Park Avenue**

**Classification:** Community Park

**Size:** 60 acres

**Parking:** Off-street

**Amenities:** Central stadium style adult and youth baseball field, youth baseball and softball fields, connections to Mauneshia River, bike path, disc golf, playground, private pavilions, storage buildings, restroom buildings, concession buildings, basketball courts, natural playgrounds, Historic Carousel, natural parking, oak lawns, yard waste refuse storage, water fountains and walking trails.

#### **Waterloo Regional Trailhead - 760 McKay Way**

**Classification:** Neighborhood Park

**Size:** 2.5 acres

**Parking:** Off-street

**Amenities:** Twenty seven car parking lot and two Handicap parking stalls, providing connections to the Garman Nature Preserve. Warming Room, Wi-Fi, men's and women's bathrooms, covered deck.

**Upgrades:** Playground Area

**Morrison Field – 127 Minnetonka Way**

Classification: Neighborhood Park

Size: 4.1 acres

Parking: On-street/off-street

Amenities: Soccer fields with goals, on-street parking and small parking lot, memorial sign, lawn seating, porta-potty and open lawn park space.

Upgrades: Football goal posts added, paved parking lot, concession stand, bathrooms, shelter, playground and

bike/walking trail connecting Hwy 19 to Morrison field up to Minnetonka Way and the Indian Hills Nature Area.

**Veteran's Memorial Park – 113 E. Madison Street**

Classification: Special Use Park

Size: 0.25 acre

Parking: On-street

Amenities: Central downtown gathering space with covered performance stage, refurbished Mauneshia Business Center, war memorial, limestone clad seat wall, water fountain and ornamental plantings.

**Youker Park – 291 Mills Street**

Classification: Nature/Conservation Area

Size: 5 acres

Parking: On-street/off-street

Amenities: Memorial stones, eight car parking lot, bike path, Mauneshia River access, Mill Pond native planting restoration, and mown native trails.

Upgrades: Disc Golf and Dog Park

**DeYoung Farms – 500 McKay Way**

Classification: Nature/Conservation Area

Size: 5 acres

Parking: On-street/off-street

Amenities: Memorial stones, bike & walking path, native planting restoration, and mown native trails.

**St. John Lutheran School – 413 E. Madison Street**

Classification: School Park

Size: 2 acres

Parking: Off-street

Amenities: Asphalt surface games, play structures, backstops and large mowed recreation field.

**Holy Family School & Parish – 205 Milwaukee Avenue**

Classification: School Park

Size: 2 acres

Parking: Off-street

Amenities: Asphalt surface games, play structures, backstops and large mowed recreation field.

**Waterloo Public School – 865 N. Monroe Street**

Classification: School Park

Size: 10 acres

Parking: Off-street

Amenities: Structured football stadium with track, lighted tennis courts, baseball field, exercise/fitness course, open lawn practice fields and large play structures.



## **Future City Parks**

### **Indian Hills Nature Area – 127 Minnetonka Way**

Classification: Nature/Conservation Area

Size: 11.1 acres

Parking: On-street

Amenities: Slightly restored native wooded area with limited mulch walking paths

### **South Side Park – 905 Julia Way**

Classification: Neighborhood Park

Size: 2.5 acres

Parking: Off-street

Amenities: Twenty car and two Handicap parking, picnic shelter, bathrooms, baseball/softball field, basketball court, walking and biking trail, playground and Skate Park.

### **Riverside Park – 203 E. Madison Street**

Classification: Neighborhood Park

Size: 1 acre

Parking: Off-street

Amenities: Seven car and connections to downtown Waterloo and Youker Park, river walk and picnic area.

### **Naming Rights TBA – 720 W. Madison Street**

Classification: Neighborhood Park

Size: 2 acres

Parking: Off-street

Amenities: Twenty car parking lot with two Handicap parking stalls, river walk, sand volleyball court, kayak launch, playground area, restrooms with changing rooms, basketball court/ice skate area, splash pad and sheltered picnic area.

### **Public Power Park & Maunesha River Greenway – S. Monroe Street Dead end**

Classification: Neighborhood Park

Size: 2.5 acres

Parking: On-street

Amenities: The area already holds a stamped asphalt river walk with benches, ornamental lighting and accent plantings. The area is frequently flooded and has shown wear over the years but is maintained by the public works department. A recent grant awarded to the City of Waterloo for flood mitigation in the South Monroe Street area could be used for improving and expanding the Maunesha River walk. Men's and women's Restrooms, playground area, picnic shelter area and river walk would be the future link to wrap around the entire dead end of Monroe Street along with educational signage on electricity and usage.

## **Waterloo Area Parks and Recreational Areas**

### **Garman Nature Preserve**

Classification: County Park

Size: 80 acres

Parking: Off-street

Amenities: Wooded area with invasive species, groomed mulch walking paths, entry sign, interpretive signage, Indian mounds and eight space paved parking lot, restrooms and covered picnic area with tables.

### **Holzhueter Farm Conservation Park**

**Classification:** State Park

**Size:** 175 acres

**Parking:** Off-street

**Amenities:** Wooded area with invasive species, groomed mulch walking paths, entry sign, interpretive signage, and bike paths.

### **Waterloo Wildlife Area**

**Classification:** County Park

**Size:** 4000 acres

**Parking:** Off-street

**Amenities:** Diverse range of habitat types. These habitat types include open water marsh, sedge meadow, fens (including Holzhueter State Park) lowland and upland hardwoods, some native prairie and extensive Shrub Carr.

## **ACCESSIBILITY FOR PERSONS WITH DISABILITIES**

The City of Waterloo's recreation facilities have limited accessibility for the handicapped, although some improvements have been made at Firemen's Park. Planned improvements to city facilities need to include accessibility criteria to meet the needs of residents, as well as the American's with Disabilities Act (ADA) requirements.

## **OUTDOOR RECREATION NEEDS STANDARDS**

The National Recreation and Park Association (NRPA) have outlined standards for evaluating a community's park system by comparing the developed open space of park and recreation areas to the community's population. The NRPA suggests that as a minimum, a park system be composed of an overall or "core" system of 6.25 to 10 acres per 1,000 populations. The park system is further defined by park classifications.

Mini Park  $\frac{1}{4}$  -  $\frac{1}{2}$  acre / 1,000 population

Neighborhood Parks 1 - 2 acres / 1,000 population

Community Parks 5 - 8 acres / 1,000 population

Core Park System 6.25 - 10 acres / 1,000 population

The standards outlined by the NRPA are intended to be used as a planning guide. Each community has different and unique parklands and opportunities. In Waterloo, the "core" parkland system exceeds 10 acres/1,000 populations, primarily due to Fireman's Park 60 acres size. However, one large park does not satisfy all of a community's parkland needs. A well-balanced park system incorporates a variety of park types and sizes to serve the community.

# RECOMMENDATIONS FOR OUTDOOR RECREATION PROVISIONS

Park and outdoor recreation facilities serve more purposes than to solely provide a physical aspect that fills up the park and open spaces. Creating awareness, developing programs and activities, coordination between user groups and city staff, budgeting and procuring funding and everyday upkeep of the park and open spaces are crucial behind the scene activities needed to ensure long term use and sustainability of a communities open spaces for future generations. The following are recommended additions for the current park programming and facilities operations.

- Increase community and user group involvement
- Create a “Friends of Waterloo Parks” group to help with annual clean up and program activities
- Work with local animal groups and veterinarian clinics to preserve and upgrade dog park on the south side of Fireman’s Park/Youker Park
- Collaborate with McKay Nursery to investigate the expansion of the existing pedestrian path system through the nursery grounds
- Invite and encourage local Scout Groups to participate in park activities and operations and identify potential Eagle Scout projects to improve the park and outdoor spaces of Waterloo
- Develop and organize an annual Maunesha River clean up
- Create a Parks and Recreation Department that consolidates the operations, oversight and programming of all Waterloo parks and its citizens
- Increase teamwork and collaboration among Waterloo committees and agencies (Parks Commission, Fireman’s Park Board of Trustees, PublicWorks, WYSO, etc.)
- Continue to find revenue for annual allocation for park and open space improvements in the Waterloo Capital Improvement Budget in Fund 225
- Create a parkland policy for all new developments
- Increase public awareness of the park system and programs through Identity/Way Finding Program
- Continue the pursuit of the Remnant Lands Projects which would reduce maintenance of smaller city owned out lots by transferring ownership to adjacent property owners or programming green space for active use or plantings of native species

# ACTION PROGRAM

Some improvements, as recommended in past Recreation Plans, have been implemented, particularly those related to Firemen's Park and the South Side Park. Others are still being considered as future community action. A strategic action plan with desired implementation items, timeline and budget should be developed to prioritize program facilities & improvements. Below is a discussion of recommendations made for existing, planned and proposed recreation sites in Waterloo.

## **Existing Recreation Sites:**

### **Firemen's Park**

- Develop master plan and strategic improvement plan
- Develop programs and events to bring the community together and facilitate community engagement
- Sand Volleyball Court development and camping area

### **Waterloo Regional Trailhead**

- Design and locate appropriate signage for the Trailhead and Park
- Fundraising for park improvements
- Educational opportunities

### **Morrison Field**

- Morrison Way street and parking improvements
- Bleacher and spectator improvements
- Field improvements
- Restrooms at Morrison Way
- North side pavilion, parking and play structure
- Pedestrian path through park

### **Veteran's Memorial Park**

- Improvements to Mauneshia Business Center
- Connection to city parking lot
- Improvements to existing memorial and stage

### **Youker Park**

- Mowing of interpretive path
- Improve and expand street parking
- Design and implement interpretive nodes
- Design and build bridge connection to City Hall

### **DeYoung Farms**

- Clearing and grubbing of invasive plants
- Connecting paths to internal mulch path
- Path grading and re-mulching improvements
- Design and implement interpretive nodes
- Design and implement park entrance signs

# EXPANSION OF PARKS PROGRAM

The neighboring needs analysis suggests that Waterloo should both improve existing park and playgrounds and expand park facilities. Recommendations for neighborhoods that require the greatest amount of additional land for outdoor recreation are as follows:

## **Future Recreation Sites:**

### **Indian Hills Nature Area**

- Clearing and grubbing of invasive plants
- Connecting paths to internal mulch path
- Path grading and re-mulching improvements
- Design and implement interpretive nodes
- Design and implement park entrance signs

### **Naming Rights TBA**

- River improvements through grants
- Future use will be a park to include shelter, bathroom facility, kayak launch and splash pad
- Signage welcoming visitors to Waterloo with kiosk

### **Riverside Park**

- River improvements through grants
- Future use will be a park to include picnic area, river walk connecting downtown Waterloo and Youker Park/Firemen's Park
- Signage welcoming visitors to Waterloo with kiosk describing historic Waterloo

### **South Side Park**

- Parking area connecting to Julia Way
- Future use will be a park to include shelter, bathroom facility, basketball court, playground & baseball field
- Walking path connecting to Waterloo Regional Trailhead

### **Public Power Park**

- River walk connecting north side Monroe street river walk of dead end
- Future use will be a park to include sheltered picnic area, bathroom facility and playground
- Signage for educational purposes on electricity and energy usage

## **Signage**

Signage of the park and recreation sites is one portion of the park program that needs attention. To increase local awareness, all parks should be signed. Names of proposed parks should be descriptive of the natural environment of the specific site designated. Signs should be constructed of a rustic material and should be uniform in design throughout the City of Waterloo. Directional signs from major highways would also be helpful those visiting the City of Waterloo.

# OPERATIONS AND MAINTENANCE

Provisions for sufficient land areas and park facilities are important to a community. Even more important, however, is the need to maintain existing areas and park equipment. Waterloo's parks department should establish a regular schedule of park surveillance and inspection. The following items to be considered are:

1. Trash removal
2. Litter
3. Broken play apparatus
4. Mowing and trimming
5. Hazards
6. Mauneshia River bank and bottom cleanup
7. Vandalism prevention

## FUNDING PROGRAMS

Possible sources of funding available include, but are not limited to, Wisconsin State Agencies such as the Department of Natural Resources (DNR), Wisconsin Economic Development Corporation (WEDC), Department of Transportation (DOT), Wisconsin Housing and Economic Development Authority (WHEDA), Wisconsin Conservation Corp. (WCC), and State Historical Society.

Financing tools are also available at the city level that may be implemented, such as:

- ☐ Special tax district, tax incremental financing, special assessments, or special charges and fees.

## SUMMARY

The City of Waterloo recognizes that recreation is essential to the general welfare and happiness of its citizens. The scope of Waterloo's present recreation program indicates that the city has accepted the responsibility to provide for its citizens recreational needs.

The proposed program is ambitious and will require considerable expenditures. However, many improvements and modifications are within the community's financial limitations. Community leaders must establish priorities and for agreed-upon goals. When the community desires major site improvements, it is suggested that it work closely with the Department of Natural Resources Recreation Grant Programs to secure financial assistance.

The City should update its outdoor recreation plan to accommodate the ever changing community needs and desires. Continuous planning and plan revisions every five years will guarantee Waterloo's ability to meet the outdoor recreation needs of its citizens and help to improve the aesthetic value and program standards for the already attractive community.

	PARK AMENITIES						WATERLOO AREA RECREATION OPTIONS																												Comments
	Banquet Facility / Tavern	Indoor Shelter	Outdoor Shelter	Bathroom Facility	Playground Area	Picnic Area	Baseball Field	Softball Field	Open Green Space	Tennis Court	Basketball Court	Volleyball Court	Football / Soccer Field	Hiking / Walking Trails	Biking Trail	Kayak/Canoe Area	Camping / RV Area	Geocaching	Sledding Hill	Disc Golf	Fishing	Hunting	Running Track	Pool / Splash Pad	Ice Skating	Skate Park	Dog Park	Scenic View	Disability Accessible						
WATERLOO RECREATON AREAS																																			
Firemen's Park	X	X	X	X	X	X	X	X	X		X	X	X	X	X	X	X	X	X	X							X	X							
Waterloo Regional Trailhead		X	X	X	X	X			X				X	X			X											X	X	X					
Morrison Field			X	X	X	X			X			X	X	X												X		X							
Veteran's Memorial Park			X			X											X											X							
Youker Park									X				X	X	X						X							X							
St. John Lutheran School					X	X		X	X		X																								
Holy Family School & Parish					X	X			X		X							X																	
Waterloo Public School					X	X	X		X	X	X	X	X	X					X				X					X							
UNDEVELOPED RECREATION AREAS																																			
DeYoung Farms			X			X			X				X	X			X											X							
South Side Park			X	X	X	X			X		X		X	X			X													X					
Indian Hills Nature Area						X			X				X	X			X											X							
720 W. Madison			X	X	X	X					X		X	X	X		X				X			X	X			X	X						
Riverside Park			X			X							X	X	X		X				X							X	X						
Public Power Park			X	X	X	X							X	X	X		X				X							X	X						
AREA RECREATION AREAS																																			
Garman Preserve				X		X							X															X							
Holzhueter State Park						X			X				X	X														X							
Waterloo Wildlife Area						X			X				X		X						X	X						X							

# Waterloo, Wisconsin City Parks



**Firemen's Park**  
500 Park Avenue



**Waterloo Trailhead (WRT)**  
760 McKay Way



**Morrison Field**  
127 Minnetonka Way



**Veteran's Memorial Park**  
113 E. Madison Street



**Youker Park**  
291 Mills Street



**St. John Lutheran School**  
413 E. Madison Street



**Holy Family School & Parish**  
205 Milwaukee Avenue



**Waterloo Public School**  
865 N. Monroe Street



**DeYoung Farms**  
500 McKay Way



**South Side Park**  
905 Julia Way



**Indian Hills Nature Area**  
127 Minnetonka Way



**Naming Rights TBA**  
720 W. Madison Street



**Riverside Park**  
203 E. Madison Street



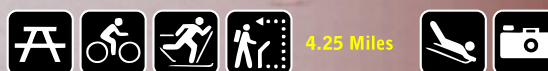
**Public Power Park**  
S. Monroe Street D.E.



**Garman Preserve**  
701 Fox Lane



**Holzhueter State Park**  
W7664 Island Road



**Waterloo Wildlife Area**  
500 Park Avenue



Restrooms



Playground



Picnic Area



Picnic Shelter



Banquet Facility



Carousel



Dog Park



Disc Golf



Camping



RV Parking



Ball Fields



Basketball Courts



Soccer Field



Tennis Courts



Volleyball Courts



Biking



Canoe/Kayak



Cross Country Ski



Fishing



Geocache



Hiking/Walking



Hunting



Ice Skating



Skate Park



Sledding



School



Pool/Splash Pad



Accessible

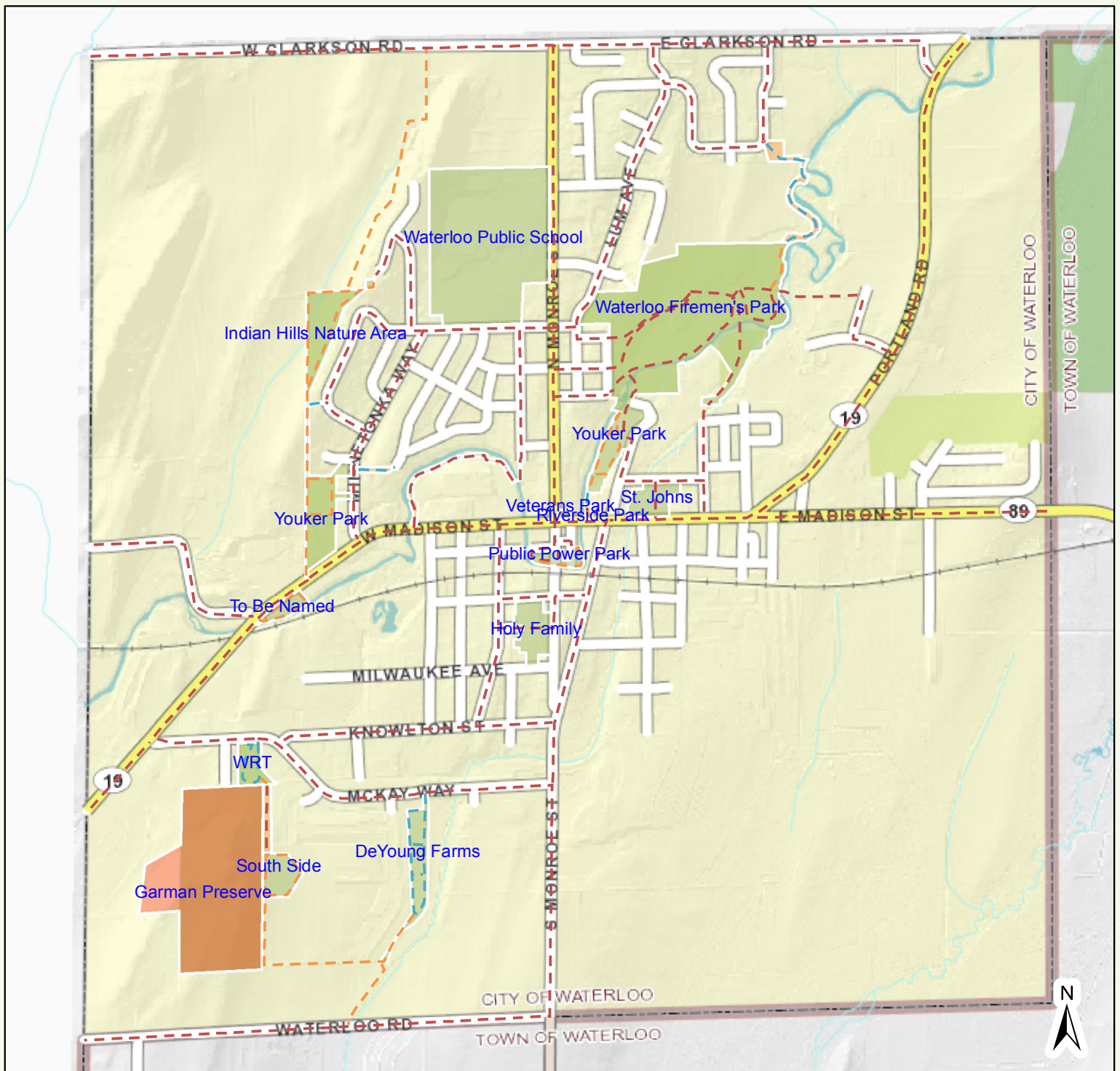


Scenic View





# Jefferson County Land Information



Jefferson County Geographic Information System

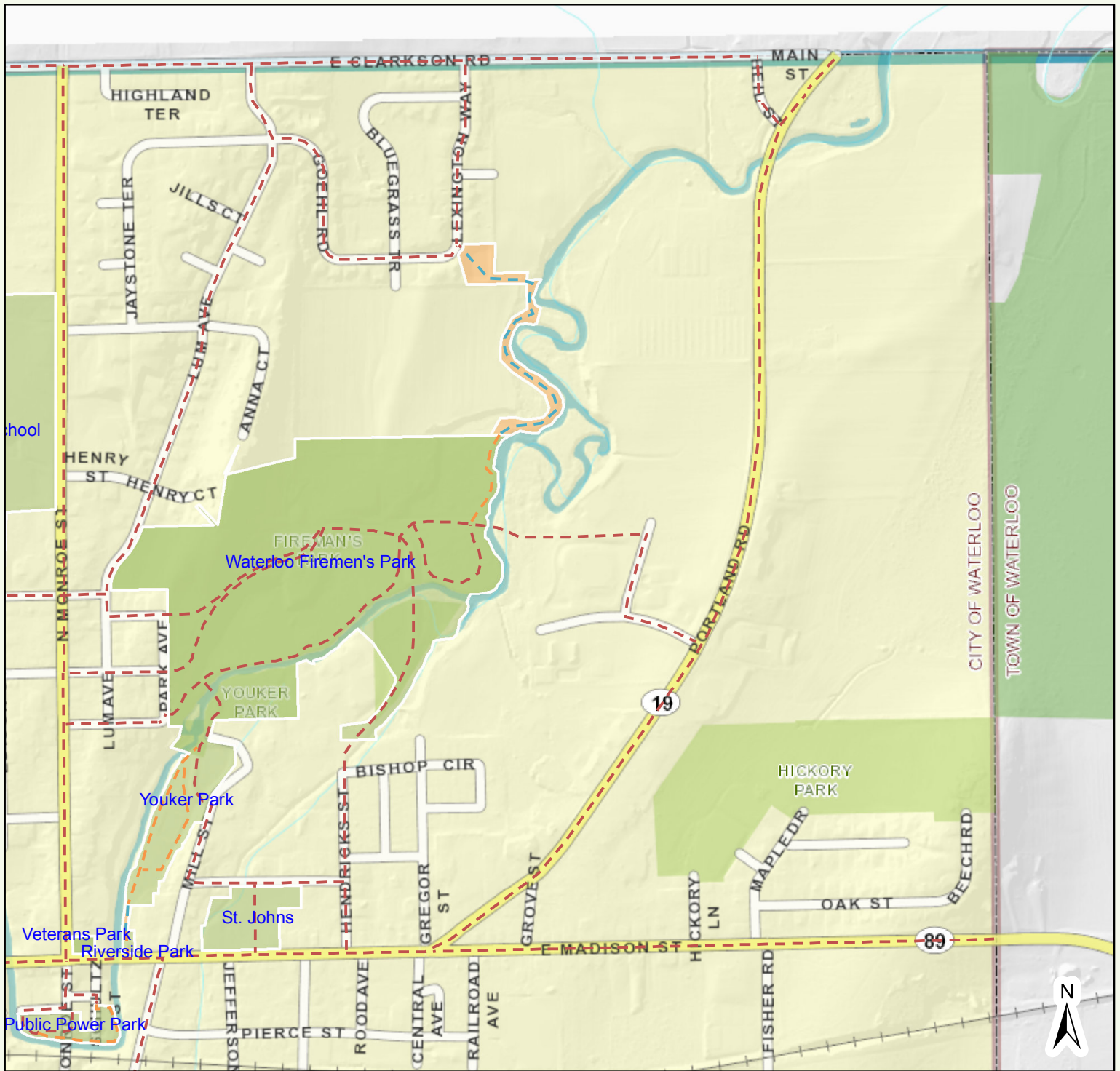
DISCLAIMER: This map is not a substitute for an actual field survey or onsite investigation. The accuracy of this map is limited to the quality of the records from which it was assembled. Other inherent inaccuracies occur during the compilation process. Jefferson County makes no warranty whatsoever concerning this information.

1,400 700 0 1,400 Feet  
1 inch = 1,500 feet

Printed on: December 14, 2016

Author: Public User

# Jefferson County Land Information



Jefferson County Geographic Information System

DISCLAIMER: This map is not a substitute for an actual field survey or onsite investigation. The accuracy of this map is limited to the quality of the records from which it was assembled. Other inherent inaccuracies occur during the compilation process. Jefferson County makes no warranty whatsoever concerning this information.

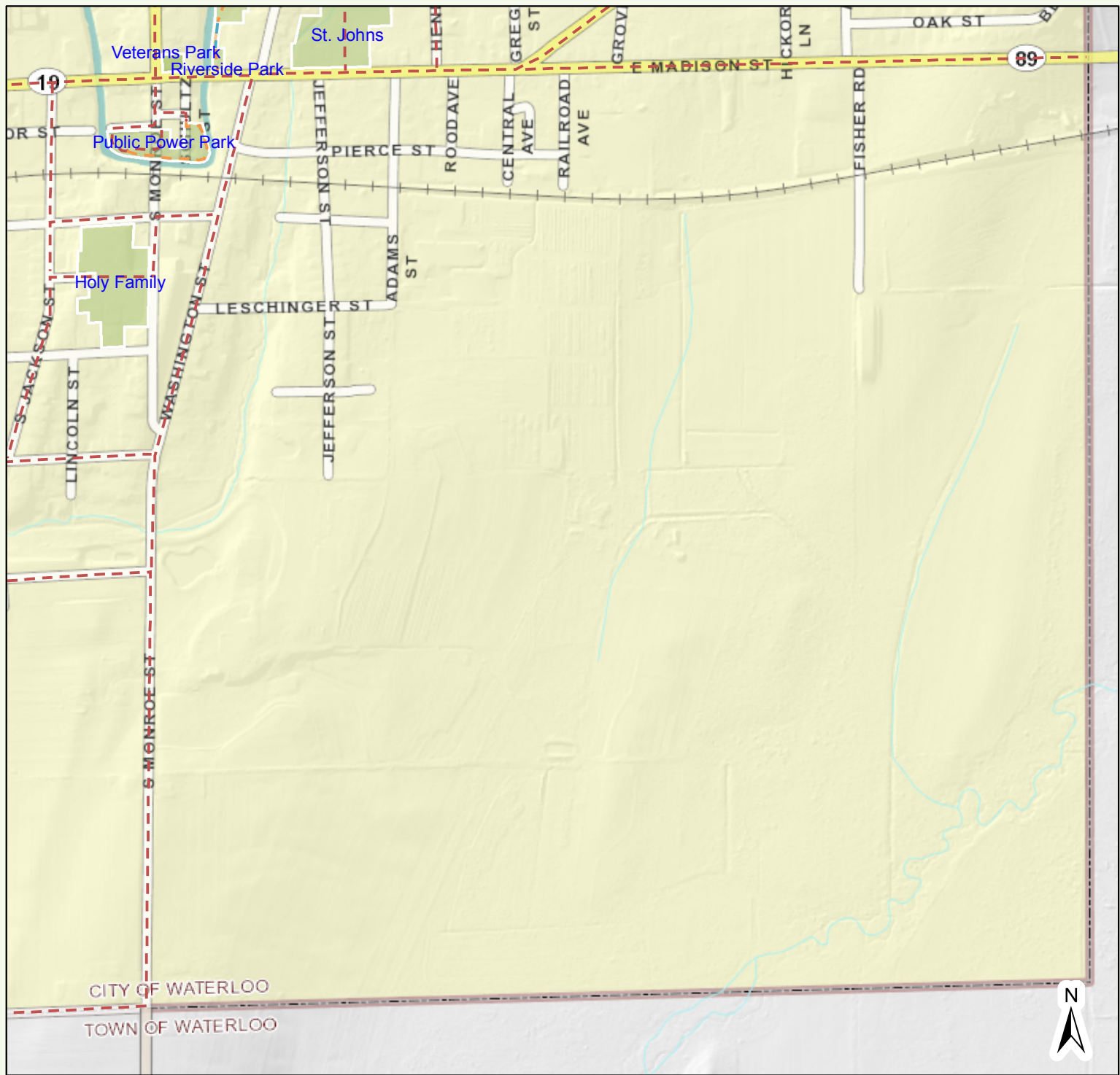
800 400 0 800 Feet  
1 inch = 800 feet

Printed on: December 14, 2016

Author: Public User



# Jefferson County Land Information



Jefferson County Geographic Information System

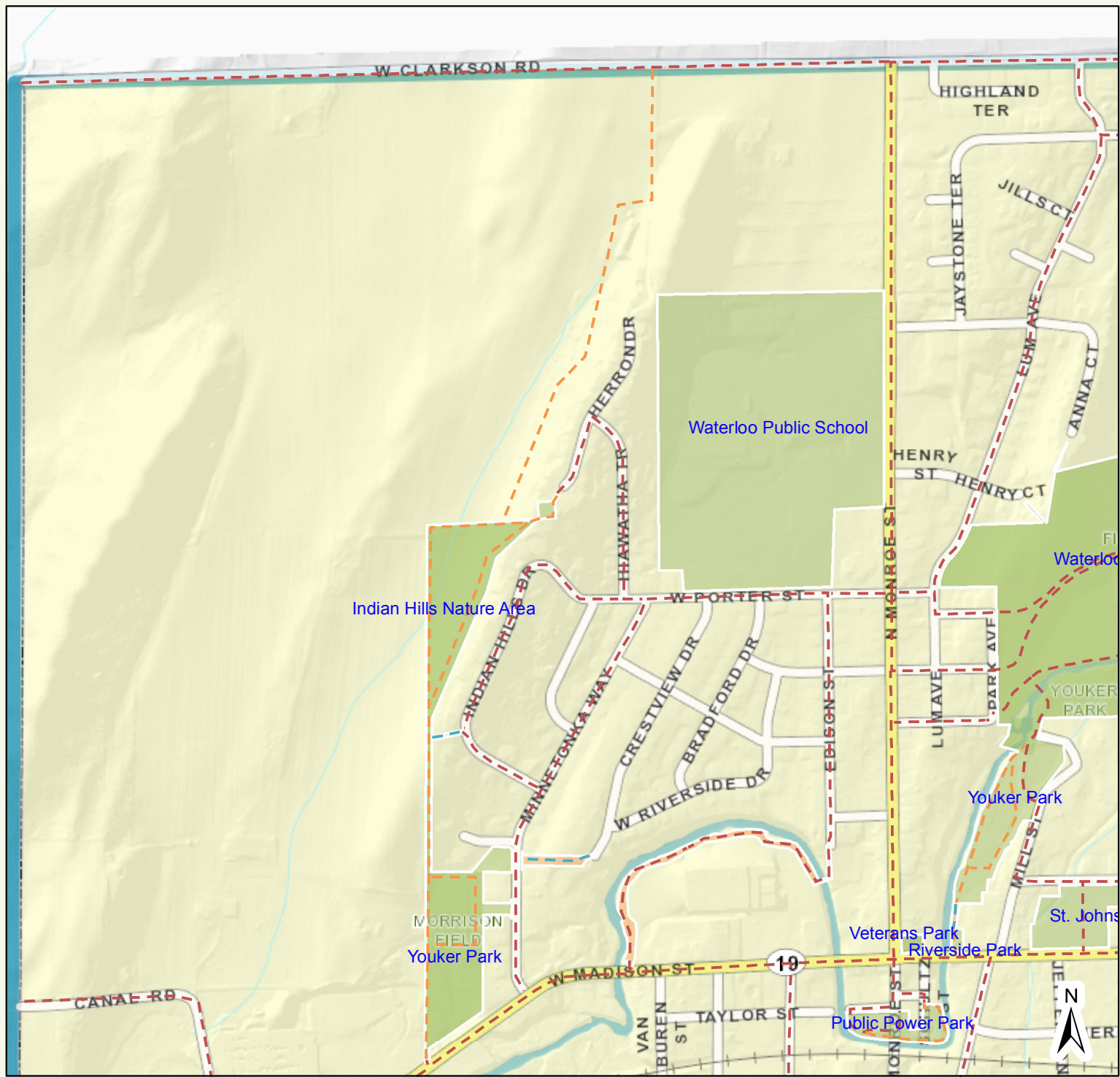
DISCLAIMER: This map is not a substitute for an actual field survey or onsite investigation. The accuracy of this map is limited to the quality of the records from which it was assembled. Other inherent inaccuracies occur during the compilation process. Jefferson County makes no warranty whatsoever concerning this information.

800 400 0 800 Feet  
1 inch = 800 feet

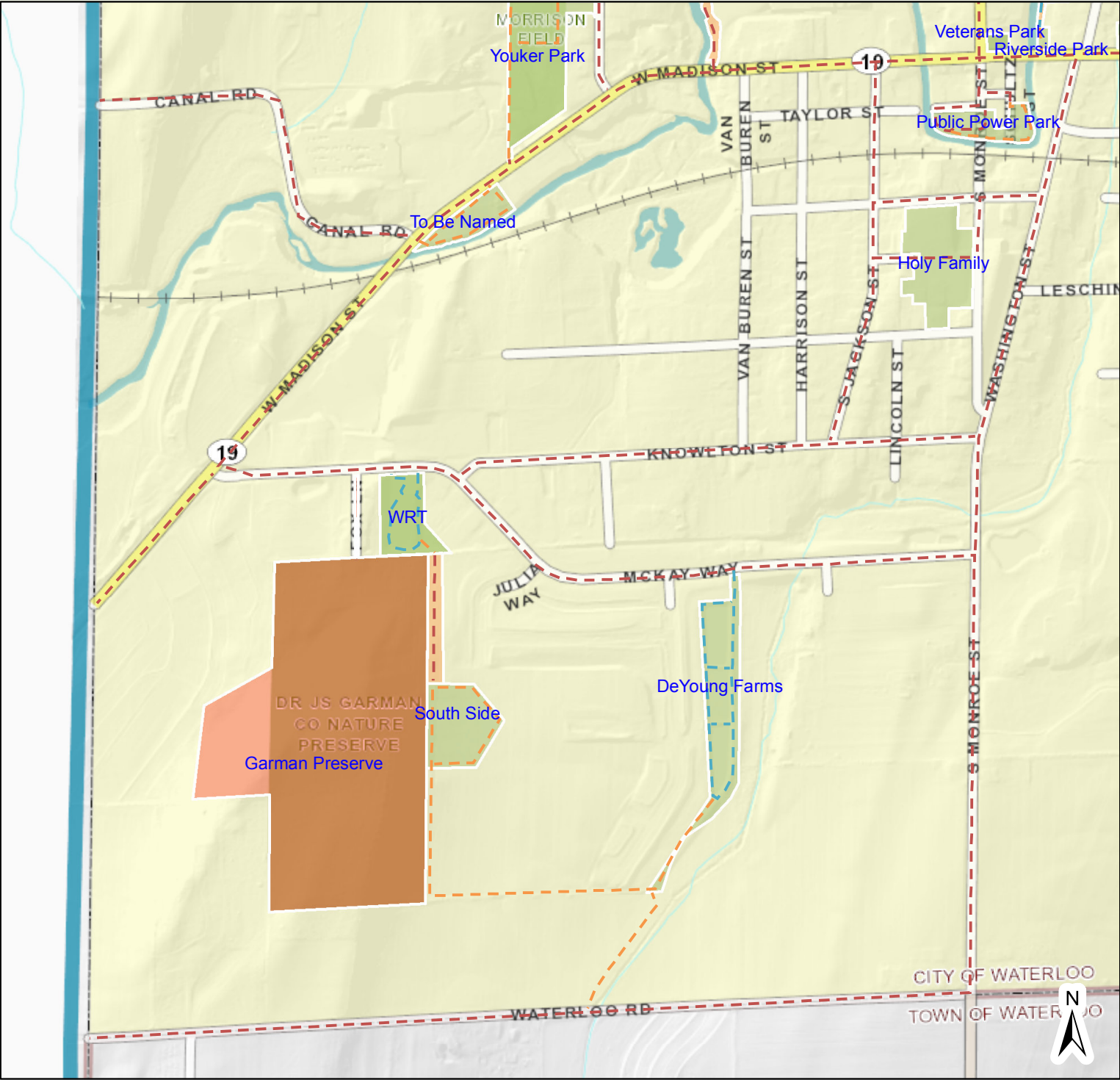
Printed on: December 14, 2016

Author: Public User

# Jefferson County Land Information

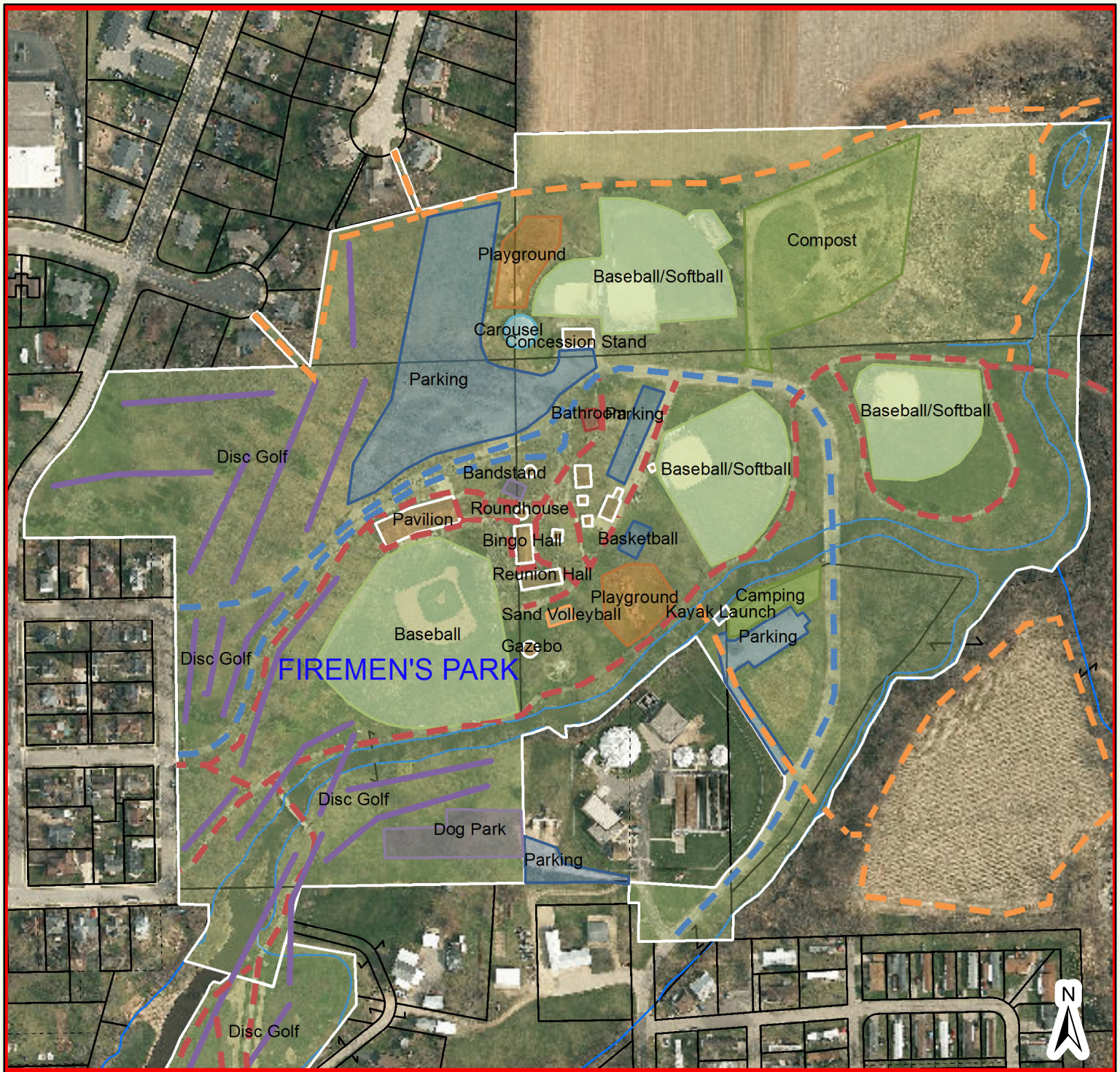


# Jefferson County Land Information

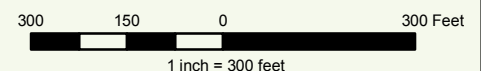




# Jefferson County Land Information



- |                           |                     |               |
|---------------------------|---------------------|---------------|
| — Municipal Boundaries    | — Section Lines     | Red: Band_1   |
| — Property Boundary       | — Surface Water     | Green: Band_2 |
| --- Old Lot/Meander Lines | — Map Hooks         | Blue: Band_3  |
| — Rail Right of Ways      | Tax Parcels         |               |
| — Road Right of Ways      | Streams and Ditches |               |

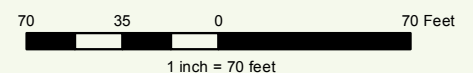




# Jefferson County Land Information



- |                           |                     |               |
|---------------------------|---------------------|---------------|
| — Municipal Boundaries    | — Section Lines     | Red: Band_1   |
| — Property Boundary       | — Surface Water     | Green: Band_2 |
| --- Old Lot/Meander Lines | — Map Hooks         | Blue: Band_3  |
| — Rail Right of Ways      | Tax Parcels         |               |
| — Road Right of Ways      | Streams and Ditches |               |



Jefferson County Geographic Information System

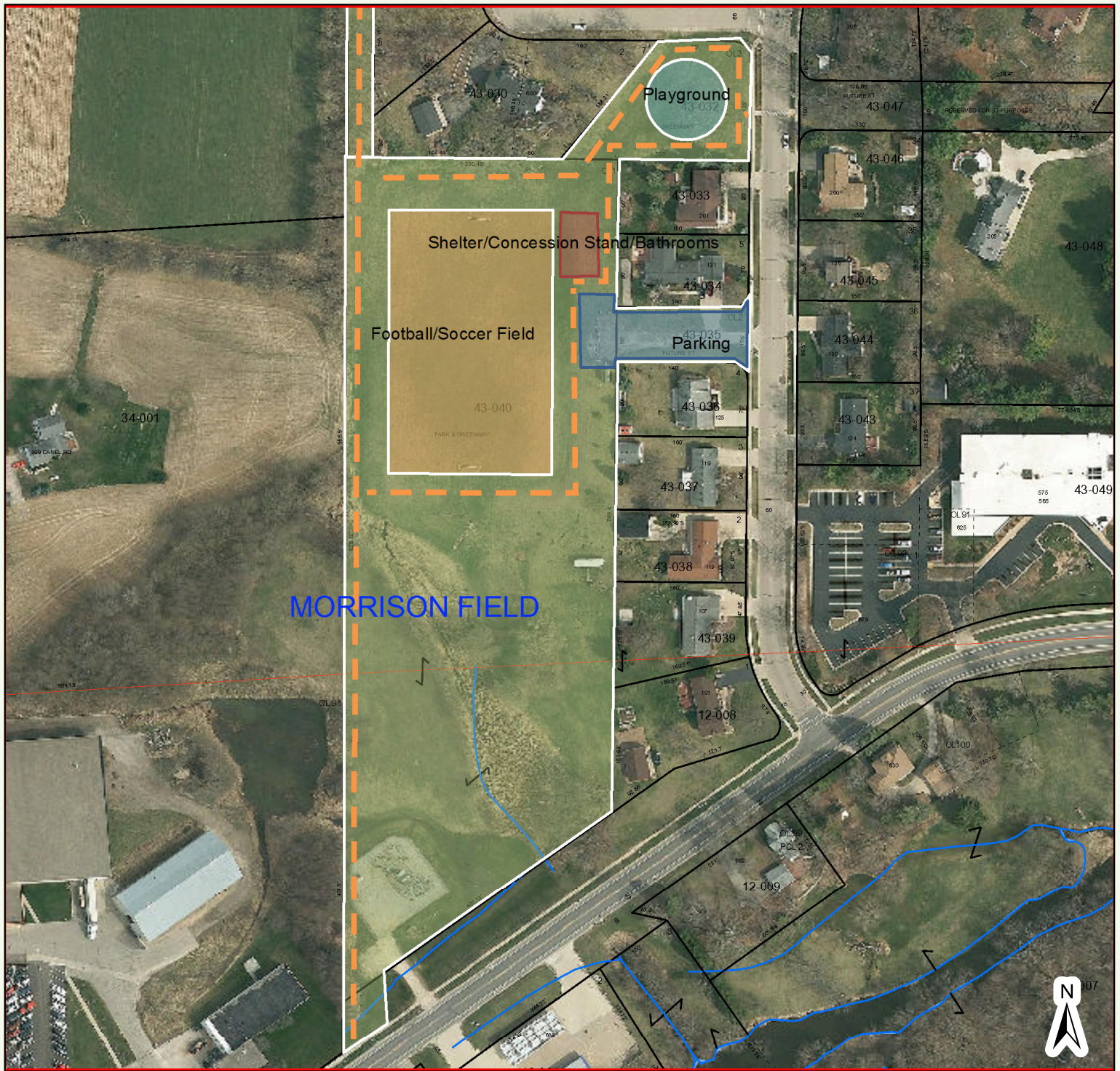
DISCLAIMER: This map is not a substitute for an actual field survey or onsite investigation. The accuracy of this map is limited to the quality of the records from which it was assembled. Other inherent inaccuracies occur during the compilation process. Jefferson County makes no warranty whatsoever concerning this information.

Printed on: December 9, 2016

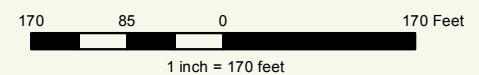
Author: Public User



# Jefferson County Land Information



- |                       |                     |               |
|-----------------------|---------------------|---------------|
| Municipal Boundaries  | Section Lines       | Red: Band_1   |
| Property Boundary     | Surface Water       | Green: Band_2 |
| Old Lot/Meander Lines | Map Hooks           | Blue: Band_3  |
| Rail Right of Ways    | Tax Parcels         |               |
| Road Right of Ways    | Streams and Ditches |               |



Jefferson County Geographic Information System

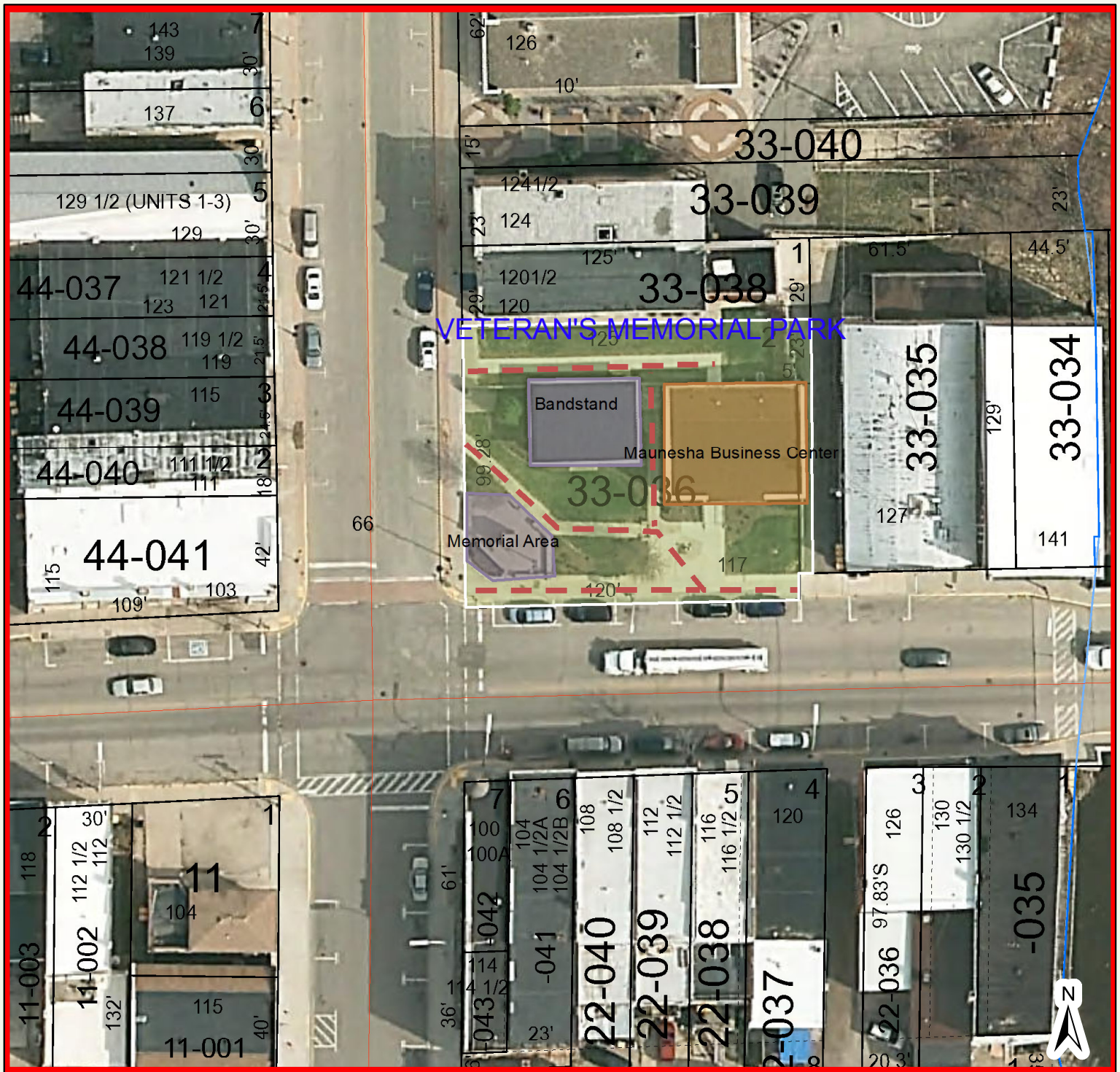
DISCLAIMER: This map is not a substitute for an actual field survey or onsite investigation. The accuracy of this map is limited to the quality of the records from which it was assembled. Other inherent inaccuracies occur during the compilation process. Jefferson County makes no warranty whatsoever concerning this information.

Printed on: December 9, 2016

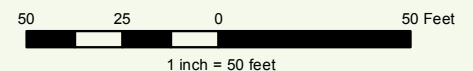
Author: Public User



# Jefferson County Land Information



- |                       |                     |               |
|-----------------------|---------------------|---------------|
| Municipal Boundaries  | Section Lines       | Red: Band_1   |
| Property Boundary     | Surface Water       | Green: Band_2 |
| Old Lot/Meander Lines | Map Hooks           | Blue: Band_3  |
| Rail Right of Ways    | Tax Parcels         |               |
| Road Right of Ways    | Streams and Ditches |               |





This aerial map shows the layout of Youker Park and its surrounding areas. The park itself is a large green field, with a dashed red line indicating a path or boundary. A solid purple line runs diagonally across the park, and a solid blue line follows the edge of the field. The text "YOUKER PARK" is written in large blue letters across the center of the park. To the right of the park, there is a "Disc Golf" area. Below the park, there are two green rectangular areas labeled "Milkweed Plantings". The map is divided into several numbered sections, with numbers 1, 2, 3, and 5 highlighted in white boxes. Various other labels are present, including "33-059", "33-056", "33-053", "33-052", "33-050", "33-049", "33-048", "33-047", "33-046", "33-045", "33-044", "33-043", "33-042", "33-041", "33-065", "33-066", "33-001", "33-002", "33-003", "33-004", "33-008", "33-009", "33-010", "33-011", "33-012", "33-017", "33-022", "33-023", "33-024", "33-025", "33-026", "33-064", "33-063", "33-062", "33-061", "33-060", "33-059", "33-058", "33-057", "33-056", "33-055", "33-054", "33-053", "33-052", "33-051", "33-050", "33-049", "33-048", "33-047", "33-046", "33-045", "33-044", "33-043", "33-042", "33-041". A north arrow is located in the bottom right corner.

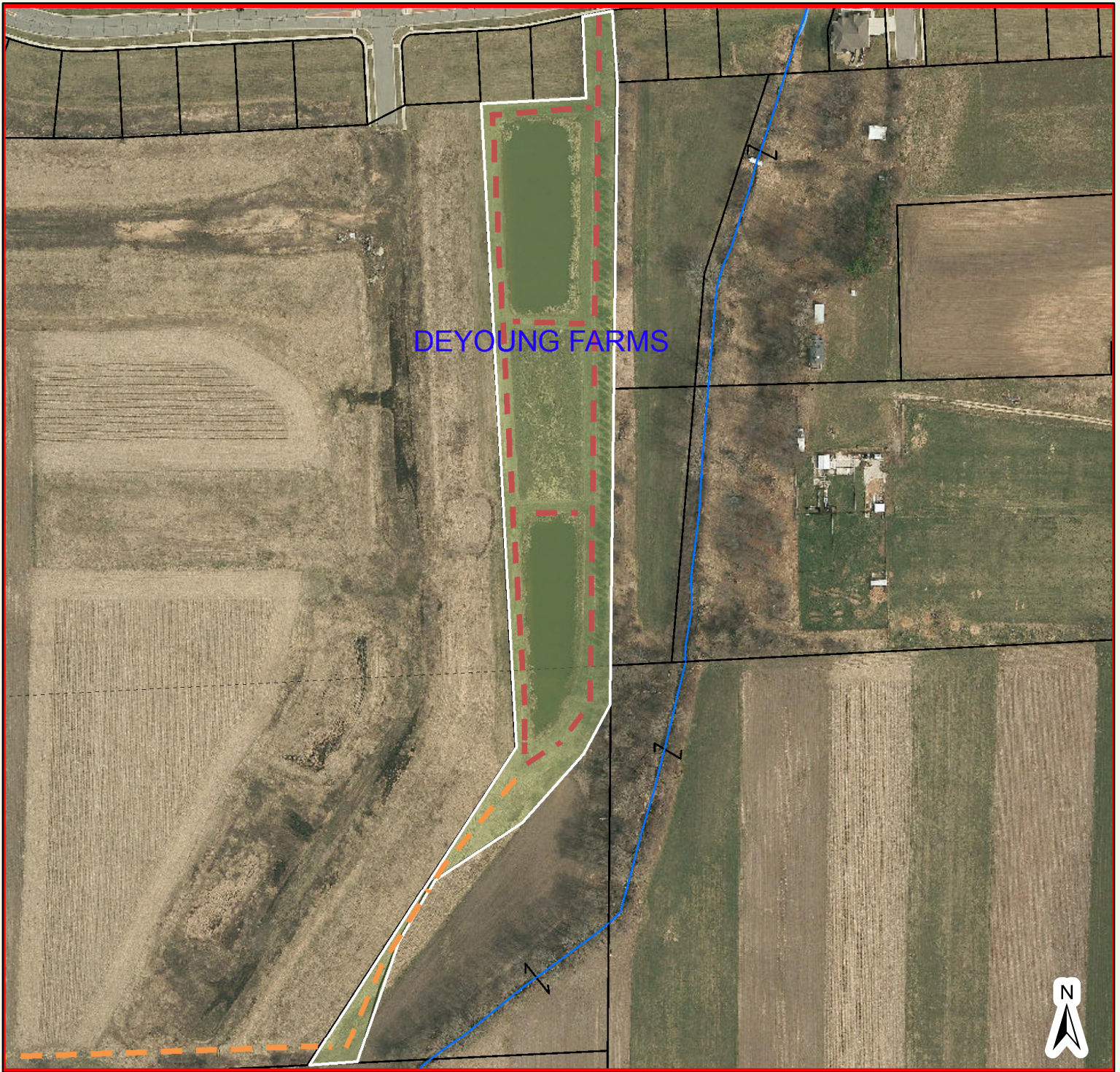
- 
- 130 65 0 130 Feet
- 1 inch = 130 feet



Author: Public User



# Jefferson County Land Information



- |                       |                     |               |
|-----------------------|---------------------|---------------|
| Municipal Boundaries  | Section Lines       | Red: Band_1   |
| Property Boundary     | Surface Water       | Green: Band_2 |
| Old Lot/Meander Lines | Map Hooks           | Blue: Band_3  |
| Rail Right of Ways    | Tax Parcels         |               |
| Road Right of Ways    | Streams and Ditches |               |

240 120 0 240 Feet  
1 inch = 240 feet



Jefferson County Geographic Information System

DISCLAIMER: This map is not a substitute for an actual field survey or onsite investigation. The accuracy of this map is limited to the quality of the records from which it was assembled. Other inherent inaccuracies occur during the compilation process. Jefferson County makes no warranty whatsoever concerning this information.

Printed on: December 9, 2016

Author: Public User

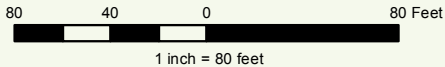


# Jefferson County Land Information



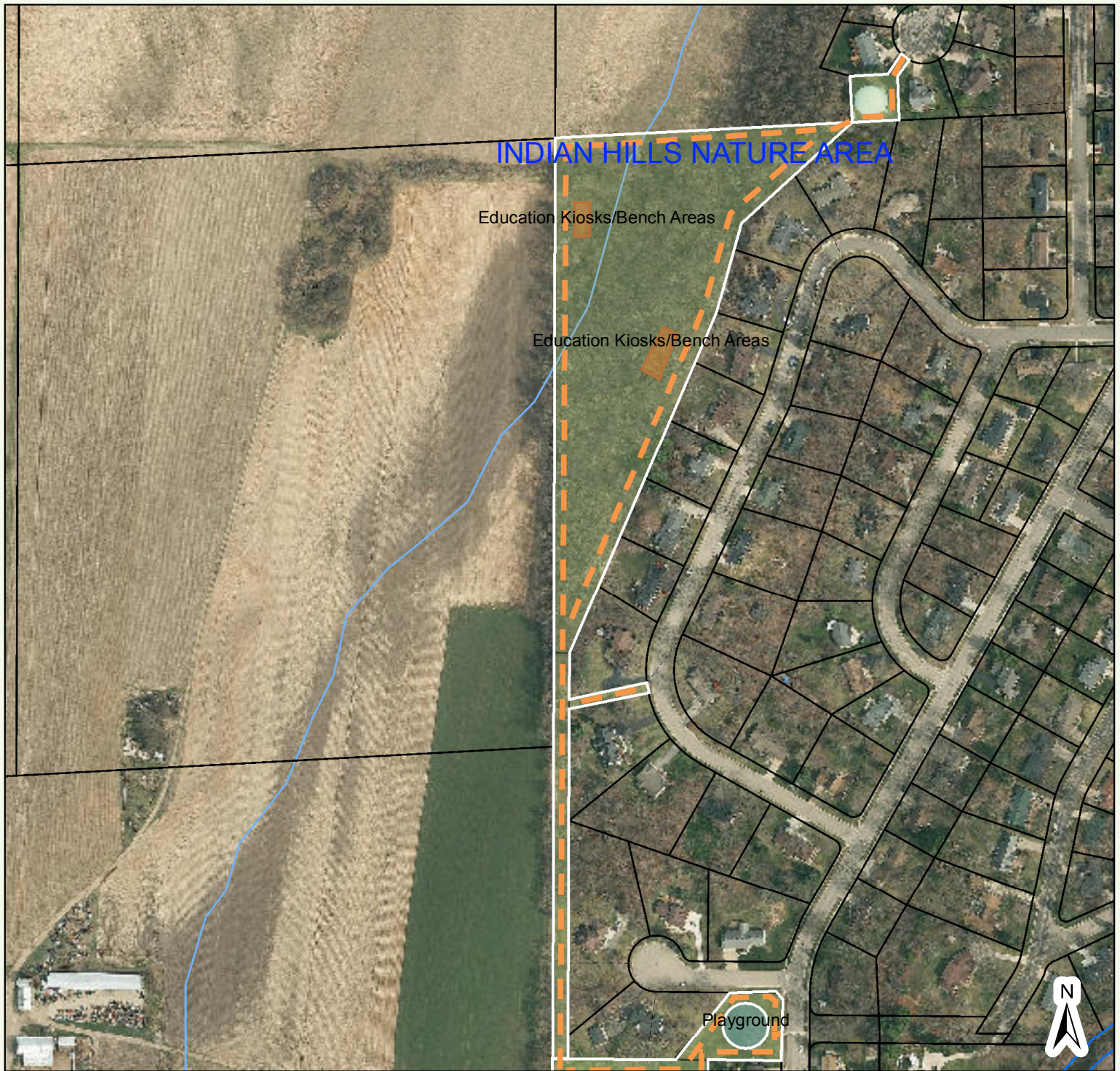
- |                           |                       |
|---------------------------|-----------------------|
| — Municipal Boundaries    | — Section Lines       |
| — Property Boundary       | — Surface Water       |
| --- Old Lot/Meander Lines | — Map Hooks           |
| — Rail Right of Ways      | Tax Parcels           |
| — Road Right of Ways      | — Streams and Ditches |

- |   |
|---|
| <span style="display: inline-block; width: 15px; height: 15px; background-color: red; border: 1px solid black;"></span> Red: Band_1     |
| <span style="display: inline-block; width: 15px; height: 15px; background-color: green; border: 1px solid black;"></span> Green: Band_2 |
| <span style="display: inline-block; width: 15px; height: 15px; background-color: blue; border: 1px solid black;"></span> Blue: Band_3   |





# Jefferson County Land Information



- |                           |                       |
|---------------------------|-----------------------|
| — Municipal Boundaries    | — Section Lines       |
| — Property Boundary       | — Surface Water       |
| --- Old Lot/Meander Lines | — Map Hooks           |
| — Rail Right of Ways      | Tax Parcels           |
| — Road Right of Ways      | — Streams and Ditches |

- |   |
|---|
| <span style="display: inline-block; width: 15px; height: 15px; background-color: red; border: 1px solid black;"></span> Red: Band_1     |
| <span style="display: inline-block; width: 15px; height: 15px; background-color: green; border: 1px solid black;"></span> Green: Band_2 |
| <span style="display: inline-block; width: 15px; height: 15px; background-color: blue; border: 1px solid black;"></span> Blue: Band_3   |



Jefferson County Geographic Information System

DISCLAIMER: This map is not a substitute for an actual field survey or onsite investigation. The accuracy of this map is limited to the quality of the records from which it was assembled. Other inherent inaccuracies occur during the compilation process. Jefferson County makes no warranty whatsoever concerning this information.

300 150 0 300 Feet  
1 inch = 300 feet

Printed on: December 9, 2016

Author: Public User



# Jefferson County Land Information

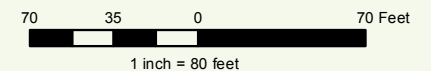


- |                       |                    |                     |              |
|-----------------------|--------------------|---------------------|--------------|
| Municipal Boundaries  | Road Right of Ways | Tax Parcels         | Blue: Band_3 |
| Property Boundary     | Section Lines      | Streams and Ditches |              |
| Old Lot/Meander Lines | Surface Water      | Red: Band_1         |              |
| Rail Right of Ways    | Map Hooks          | Green: Band_2       |              |



Jefferson County Geographic Information System

DISCLAIMER: This map is not a substitute for an actual field survey or onsite investigation. The accuracy of this map is limited to the quality of the records from which it was assembled. Other inherent inaccuracies occur during the compilation process. Jefferson County makes no warranty whatsoever concerning this information.

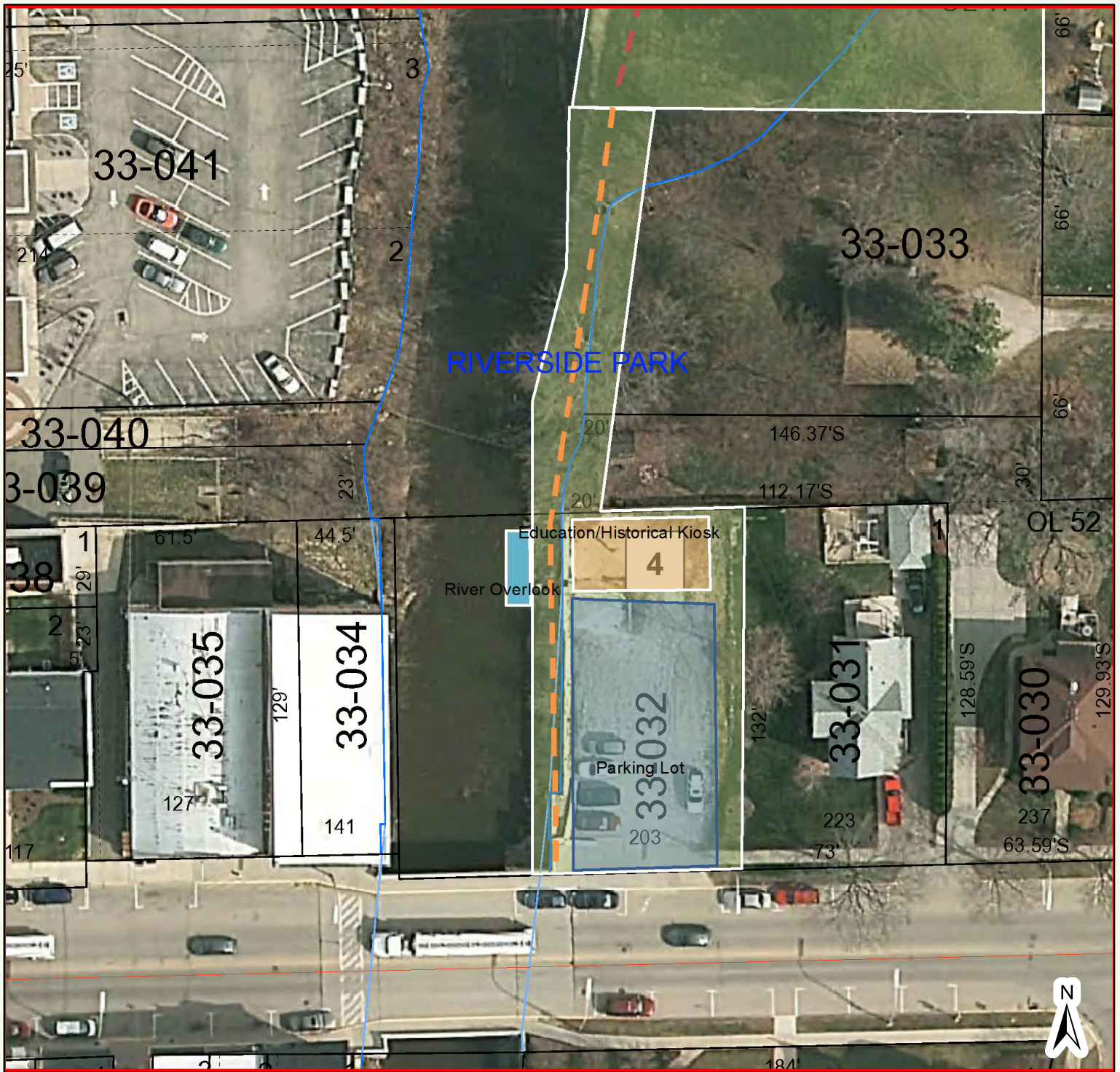


Printed on: November 22, 2016

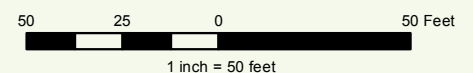
Author: Public User



# Jefferson County Land Information

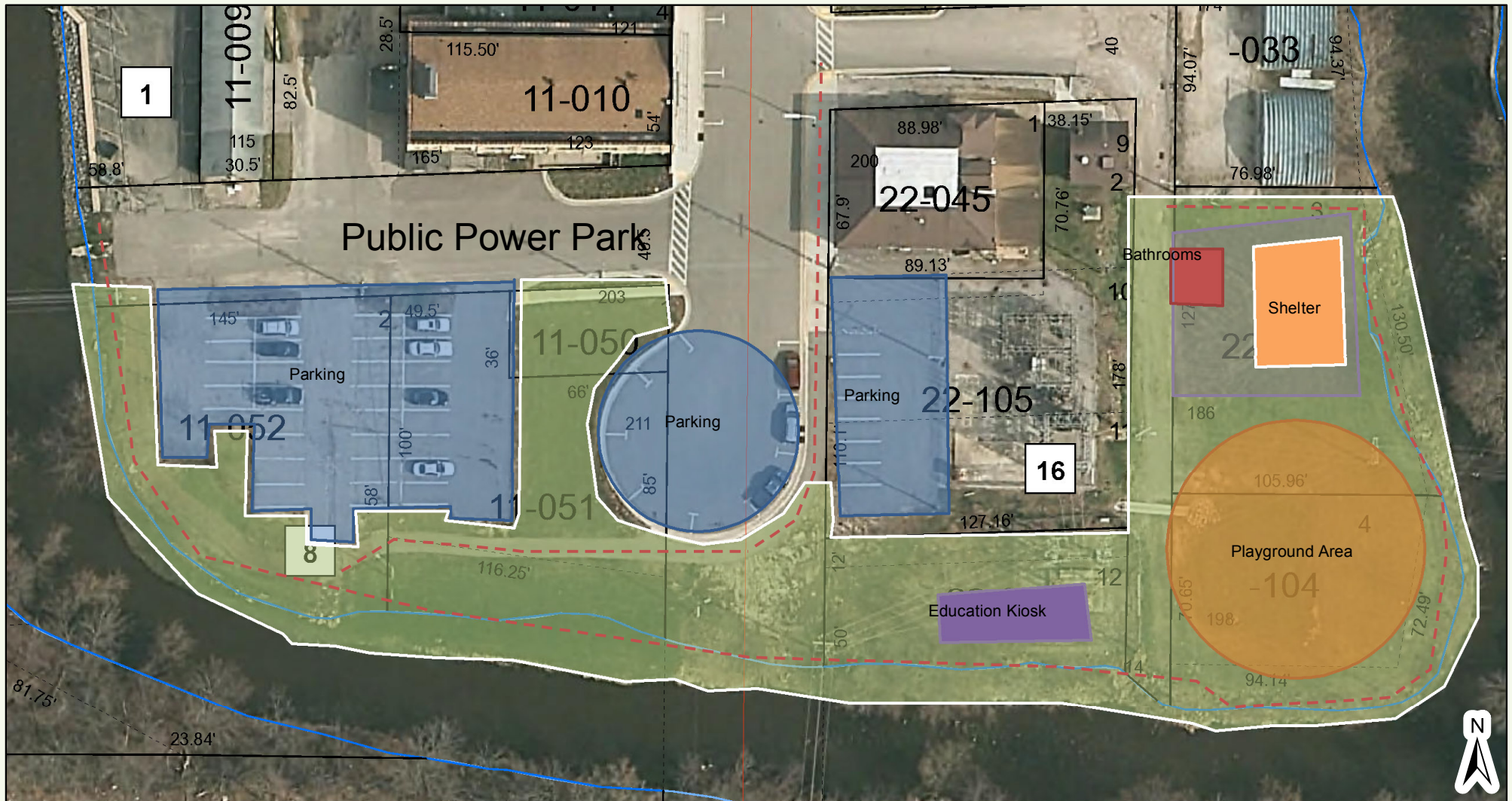


- |                       |                     |               |
|-----------------------|---------------------|---------------|
| Municipal Boundaries  | Section Lines       | Red: Band_1   |
| Property Boundary     | Surface Water       | Green: Band_2 |
| Old Lot/Meander Lines | Map Hooks           | Blue: Band_3  |
| Rail Right of Ways    | Tax Parcels         |               |
| Road Right of Ways    | Streams and Ditches |               |





# Jefferson County Land Information

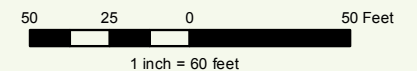


- |                       |                    |                     |              |
|-----------------------|--------------------|---------------------|--------------|
| Municipal Boundaries  | Road Right of Ways | Tax Parcels         | Blue: Band_3 |
| Property Boundary     | Section Lines      | Streams and Ditches |              |
| Old Lot/Meander Lines | Surface Water      | Red: Band_1         |              |
| Rail Right of Ways    | Map Hooks          | Green: Band_2       |              |



Jefferson County Geographic Information System

DISCLAIMER: This map is not a substitute for an actual field survey or onsite investigation. The accuracy of this map is limited to the quality of the records from which it was assembled. Other inherent inaccuracies occur during the compilation process. Jefferson County makes no warranty whatsoever concerning this information.



Printed on: November 22, 2016

Author: Public User



# Jefferson County Land Information



- |                           |                       |
|---------------------------|-----------------------|
| — Municipal Boundaries    | — Section Lines       |
| — Property Boundary       | — Surface Water       |
| --- Old Lot/Meander Lines | — Map Hooks           |
| — Rail Right of Ways      | Tax Parcels           |
| — Road Right of Ways      | — Streams and Ditches |

- |   |
|---|
| <span style="display: inline-block; width: 15px; height: 15px; background-color: red; border: 1px solid black;"></span> Red: Band_1     |
| <span style="display: inline-block; width: 15px; height: 15px; background-color: green; border: 1px solid black;"></span> Green: Band_2 |
| <span style="display: inline-block; width: 15px; height: 15px; background-color: blue; border: 1px solid black;"></span> Blue: Band_3   |

300 150 0 300 Feet  
1 inch = 300 feet



Jefferson County Geographic Information System

DISCLAIMER: This map is not a substitute for an actual field survey or onsite investigation. The accuracy of this map is limited to the quality of the records from which it was assembled. Other inherent inaccuracies occur during the compilation process. Jefferson County makes no warranty whatsoever concerning this information.

Printed on: December 9, 2016

Author: Public User



# Jefferson County Land Information

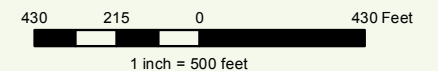


- |                       |                    |                     |              |
|-----------------------|--------------------|---------------------|--------------|
| Municipal Boundaries  | Road Right of Ways | Tax Parcels         | Blue: Band_3 |
| Property Boundary     | Section Lines      | Streams and Ditches |              |
| Old Lot/Meander Lines | Surface Water      | Red: Band_1         |              |
| Rail Right of Ways    | Map Hooks          | Green: Band_2       |              |



Jefferson County Geographic Information System

DISCLAIMER: This map is not a substitute for an actual field survey or onsite investigation. The accuracy of this map is limited to the quality of the records from which it was assembled. Other inherent inaccuracies occur during the compilation process. Jefferson County makes no warranty whatsoever concerning this information.

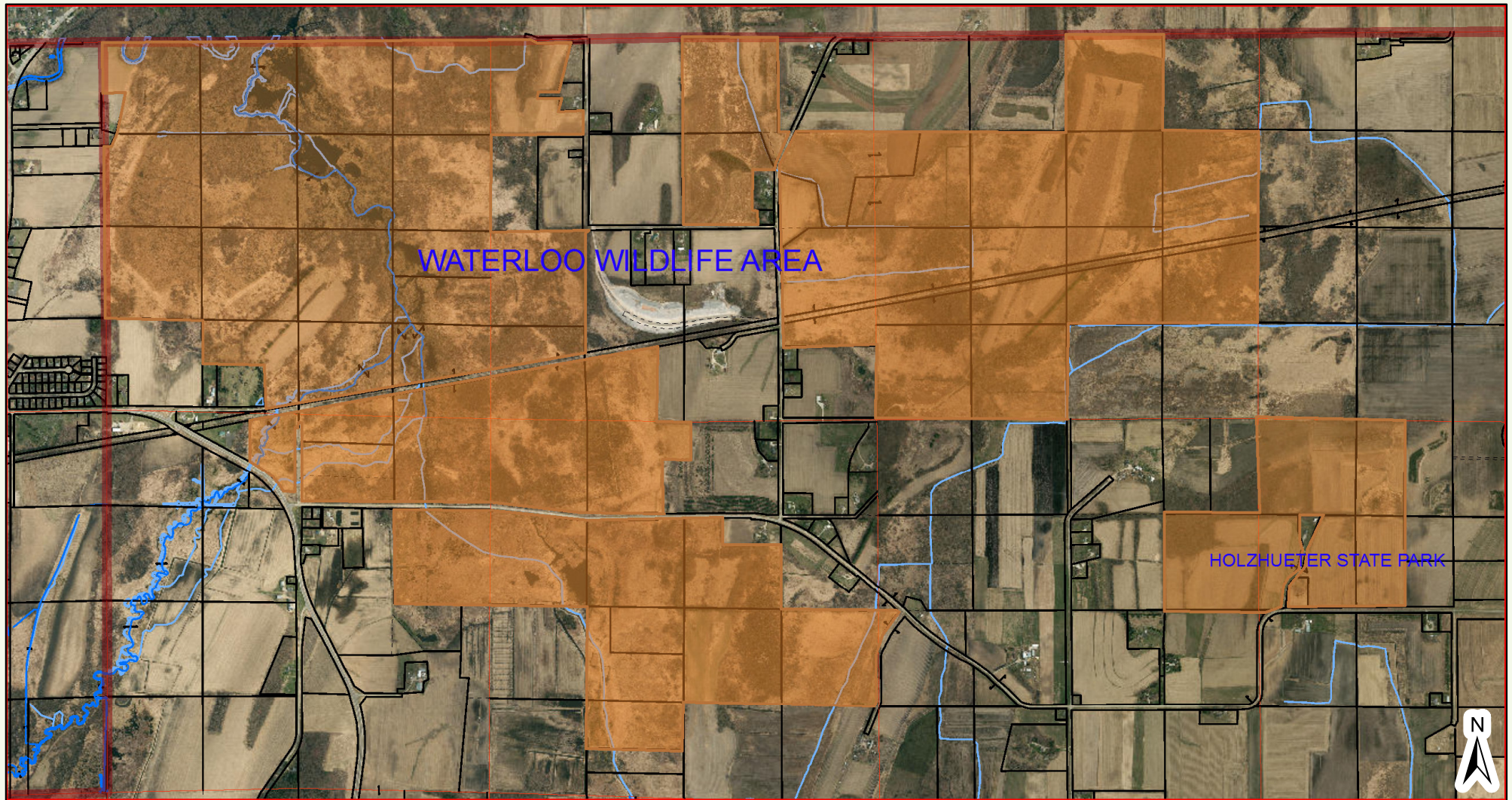


Printed on: December 9, 2016

Author: Public User



# Jefferson County Land Information



- |                       |                    |                     |              |
|-----------------------|--------------------|---------------------|--------------|
| Municipal Boundaries  | Road Right of Ways | Tax Parcels         | Blue: Band_3 |
| Property Boundary     | Section Lines      | Streams and Ditches |              |
| Old Lot/Meander Lines | Surface Water      | Red: Band_1         |              |
| Rail Right of Ways    | Map Hooks          | Green: Band_2       |              |



Jefferson County Geographic Information System

DISCLAIMER: This map is not a substitute for an actual field survey or onsite investigation. The accuracy of this map is limited to the quality of the records from which it was assembled. Other inherent inaccuracies occur during the compilation process. Jefferson County makes no warranty whatsoever concerning this information.

1,600 800 0 1,600 Feet  
1 inch = 2,000 feet

Printed on: December 9, 2016

Author: Public User