

# City of Waterloo

## Comprehensive Outdoor Recreation Plan



**5-YEAR  
2023-2028  
Waterloo, Wisconsin  
Adopted: February 2023**

## **Plan Contributors**

### **City Officials**

Jeni Quimby - Mayor

Austin Kuhl - Alderperson Ward 2

Jeanette Petts - Alderperson Ward 4-5

Charlie Kuhl - Alderperson at Large

Sara Cummings - Alderperson Ward 1

Tim Thomas - Alderperson Ward 3

Rich Weihert - Alderperson at Large

Ron Griffin - Alderperson at Large

### **Park Commission**

Charles Crave - WRT Representative

Shawn Vieth - Citizen Representative

Rich Weihert - Council Representative

Al Kegler - Citizen Representative

Jim Setz - Waterloo School Board

### **Park Commission -- Ex Officio Members**

Chad Yerges - City of Waterloo Public Works Director

Jessica Pickel - Friends of Waterloo Firemen's Park President

Otto Degler - Waterloo Youth Sports Organization President

Gabe Haberkorn - City of Waterloo Parks Coordinator (Park Commission Chair)

### **Waterloo School District**

Brian Henning- District Administrator

Holly Viken - Elementary School Principal (PK-4)

Christine Ziemann - Intermediate/Middle School Principal (5-8)

Shawn Bartelt - High School Principal (9-12)

### **City Staff**

Gabe Haberkorn - City of Waterloo Parks Coordinator

Chad Yerges - City of Waterloo Public Works Director

Jeanne Ritter - City of Waterloo Clerk

<b>TABLE OF CONTENTS</b>	<b>PAGE</b>
Executive Summary	4
Goals and Objectives	5
Definitions	6
Planning Process	9
Summary of Past CORP Plan	9
Description of the Planning Region	10
Outdoor Recreation/Natural Resources Inventory	10
Outdoor Recreation Facility Inventory	11
Accessibility for Persons with Disabilities	14
Outdoor Recreation Needs Standards	14
Recommendations for Outdoor Recreation Provisions	15
2017-2022 Action Program	16
Expansion of Parks Program	17
Operation and Maintenance	18
Funding Programs	18
Summary	18

<b>APPENDIX</b>	<b>PAGE</b>
Maps of Waterloo Parks and Green space	
Park Facility Matrix	19
Park Facility Poster	20
Connectivity Plan	21-25
Waterloo Parks Inventory & Analysis Maps	26-31
Firemen’s Park	26
Waterloo Regional Trailhead	27
Morrison Field	28
Veteran’s Memorial Park	29
Youker Park	30
DeYoung Farms	31
Fox Park	32
Future Waterloo Parks	33-35
South Side Park	33
Indian Hills Nature Area	34
River Side Park	35
Waterloo Area Parks Maps	36-38
Garman Nature Preserve	36
Holzhueter State Park	37
Waterloo Wildlife Area	38

# EXECUTIVE SUMMARY

## 2023 – 2028 Goals and Objectives

- 1. FIREMEN'S PARK:** Utilizing space and venues to create personal interaction among community members, while making Fireman's Park the epicenter of all community gatherings. Fund and implement a Capital Improvement Plan to modernize the park while keeping the "nostalgia" that it holds in place.
  
- 2. WATERLOO REGIONAL TRAILHEAD:** Fund and implement a phased nature based outdoor recreation program operations/activities plan in partnership with local and regional project supporters.
  - 2017: Fundraise, Rentals and Educational Opportunities
  - 2018: Fundraise and set up facility, install interactive displays, organize initial programs, plantings & signage (phase 1).
  - 2019: Fundraise for recurring expenses, playground & install playground, plantings & signage, install interpretive kiosks, additional programming.
  - 2020: Complete outdoor amenities, continue programming, and fundraise for recurring expenses & special projects, building regional support.
  - 2021-2022: Continue facility fundraising & programming.
  
- 3. STAFFING:** Identify recurring sustainable funding to support a Parks Coordinator responsible for all parks; Park Cleaning and Seasonal personnel provided through tax levy dollars and park revenue dollars; a Naturalist Intern for outdoor recreational/educational activities focused at the Waterloo Regional Trailhead provided by fundraising efforts and park revenue dollars.
  
- 4. PARK MAINTENANCE:** Seek adequate funding for existing parkland maintenance.
  
- 5. NEW PUBLIC SPACES & BIKE ROUTES IN CONCERT WITH ECONOMIC DEVELOPMENT AND POPULATION GROWTH:** Develop park space and public space along the Maunasha River including 720 West Madison Street, 333 West Madison Street, Riverside Park, Power Plant Park, South Side Park, Morrison Field, Indian Hills and Youker Park and establish a Dog Park in Firemen's Park between the Maunasha River pedestrian bridge and the Wastewater Treatment Plant. Also prepare for bike and pedestrian routing opportunities resulting from Jefferson County grant applications for a Waterloo to Watertown bike route.

# GOALS AND OBJECTIVES

Through a comprehensive public outreach campaign and active discussions with the City of Waterloo Parks Commission and city staff, a detailed list of goals and objectives were developed for the Comprehensive Outdoor Recreation Plan. Along with our main goal of bringing the community together within our park system, these goals and objectives are our main goals for the public.

- Provide and maintain active and passive recreational lands to meet current and future recreational needs
- Ensure that parklands are designed to meet the special needs of all residents
- Update the CORP plan to Wis. DNR standards
- Adequately fund parkland maintenance and future park facility development and create excitement and awareness for the Waterloo Parks
- Promote all Waterloo Parks in addition to Firemen's Park
- Use available resources to further enhance the quality of the City's park system
- Reduce general city maintenance of parklands and green space
- Develop an implementation strategy for parkland improvements and restructuring
- Bring a more graphic approach to the CORP to increase fundraising abilities
- Develop strong community support and increase user frequency
- Create more diverse uses and programs for the park system
- Develop and design pedestrian and bike trail system through the city connecting all parks
- Promote resident support and involvement in the development, improvement and maintenance of the City's parks and open spaces
- Provide residents with safe and reliable recreation equipment throughout the City park system
- Provide adequate management and staffing to oversee park and open space maintenance.

# DEFINITIONS

County, state, and federal agencies have quite varied and extensive recreation and resource protection responsibility. Although these recreation elements are used as a guide, community agencies are most often concerned with meeting local daily recreation needs that provide a variety of park settings which serve all age and user groups within the local community. The following selected definitions of types of parks are those considered most appropriate for the City of Waterloo.

## Parkland Classifications

Parkland classification is determined by the Wisconsin Statewide Comprehensive Outdoor Recreation Plan (SCORP) standards and by the City of Waterloo. The following are the City of Waterloo's general guidelines for parkland classifications.

### **Mini Parks**

Summary: A play lot or playground providing space for parental supervised recreation of toddlers and young children within a neighborhood, or as part of a larger neighborhood or community park and urban center, including retail shopping area.

Size: 0.5 to 2 acres

Amenities: Generally, include sand play areas, play apparatus, play equipment and other special child-oriented features.

### **Neighborhood Park**

Summary: A neighborhood park, by size, program, and location, provides space and recreation activities for the immediate neighborhood in which it is located. It is considered an extension of neighborhood residents' "out-of-yard" and outdoor use area.

Size: 1-25 acres

Amenities: Compatible with the neighborhood setting and park site constraints. Generally, includes the following facilities, which are determined with public input as to use and activities:

- Parking (10 – 20 vehicles)
  - Restrooms
  - Tot lot/ Children's Play
  - Family/ Group Picnic Facility
  - Informal Picnic Area with Benches and Tables
  - Unstructured Turf Grass Play Area or Practice Field
  - Sports Facilities: Basketball, Volleyball, Softball/Baseball Field, Tennis Courts, Ice Skating, or
- Additional Features
- Efforts should be made to allow easy pedestrian access to the park

## **Community Park**

Summary: A community park, by size, program, and location, provides space and recreation activities for a defined service area, the entire city, or significant geographic segment of the city's population.

Size: 5 – 150 acres

Amenities: Compatible with the neighborhood setting and park site constraints. Generally includes the following facilities, which are determined with public input as to use activities:

- Off-street Parking
- Restrooms
- Community Recreation Center
- Park Maintenance and Equipment Storage
- Tot lot/ Children's Play
- Family/ Group Picnic Shelters
- Informal Picnic Area with Benches and Tables
- Unstructured Turf Grass Play Area or Practice Field
- Sports Facilities May Include: Basketball, Volleyball, Softball/Baseball Field, Tennis Courts, Ice Skating, Jogging Trails, Concessions, Football or Additional Features.

## **Special Use Park**

Summary: A special use park satisfies a demand for a particular sport, recreational activity, or special event. A special use park may also be a sports park combined with enterprise activities and administered as a community recreation resource.

Size: Determined by size available and program

Amenities: Special use parks require facility programming that is based on community needs and may include:

- Bandstand/ Amphitheater
- Memorial Features
- Water Play Park
- Festival/Swap Meet/Farmers Market
- League/Individual Sports Complex
- Fitness/Entertainment Center
- Skateboard/In-Line Hockey Park
- Recreation Programs and Classes
- Youth/Community Center

## **School Park**

Summary: School park sites complement other community recreation or open lands. The important outcome in the joint-use relationship is that both the school district and park system benefit from shared use of facilities and land area.

Size: Varies, dependent on school. Waterloo Comprehensive Outdoor Recreation Plan 2014

**Amenities:** Typically used for neighborhood and community recreation services. The functions may include sports, recreation classes, passive recreation activities, and other recreation programs suitable for an elementary or secondary education school.

### **County Park/State Park**

**Summary:** County and State parks consist of land that is specifically set aside for active and passive recreation uses, and can accommodate large gatherings, special events, or individual users. County and State parks offer a wide variety of compatible outdoor recreation activities. In addition, these parks may provide areas that do not primarily serve a recreational purpose such as protected natural areas, historic areas, and special use areas.

**Size:** Varies

**Amenities:** Recreation Trails, Hiking, Picnic Areas, Native American Burial Mounds

### **Nature/Conservation Area**

**Summary:** Nature/conservation areas compliment the park system by providing active and passive recreation in natural environments.

**Size:** Determined by size of lands available

**Amenities:** Generally determined by terrain, topography, and vegetation ecosystems, which may include

- Recreational trails (hiking, bicycling, mountain biking, cross-country ski, etc.)
- Picnic areas
- Wildlife observation
- Vegetation studies
- Fishing access

### **Specialized Recreation Areas**

Golf courses, historic sites, and conservancy areas are examples of specialized recreation areas. Most of these have limited active recreation value, are undeveloped for recreation, or are not always available for use by the public. Such areas were not considered in the initial evaluation of recreation needs for Waterloo. However, recent encroachments along the Mauneshia River and of the many scenic vistas around the community have increased the need to protect these valuable natural resources. In addition, other changes have occurred that illustrate the need for the protection, enhancement, and perpetuation of such elements that reflect the City's cultural, social, architectural, and geological history.

### **Other Recreation Facilities**

Waterloo is fortunate to have numerous non-park recreational facilities. The indoor swimming pool at Waterloo High School is available year-round for recreational swimming. Tennis courts and a weight room are also available at the high school. The new bike trail/route allows safe travel across the city from east to west.



# PLANNING PROCESS

When the CORP plan was first adopted, a three phased planning process was developed to complete the Comprehensive Outdoor Recreation Plan. The first phase focused on understanding the physical assets and constraints of the individual park or green space areas. Site visits, gathering base map information and reviewing past planning documents greatly impacted the design and program for each area. The Waterloo Parks Commission desired a strong voice to come from the school district. An interactive workshop was held that allowed students to draw on base maps and create typical designs for what they desired in a park. Through an active series of meetings with the Waterloo Parks Commission, a public open house, a month-long community survey and numerous stakeholder interviews, a program was developed for each existing park and new park locations were identified to accommodate future growth of the city. Today, the City of Waterloo Park Coordinator, City of Waterloo Director of Public Works, and Waterloo Parks Commission update that plan.

Once the first phase of investigation and park programming was completed, design alternatives that incorporated the desired park program were developed for each park area. Design alternatives included concept plans, typical cross sections, and sketches to convey design intent. Accompanying the concept plans were estimates of probable cost, developed to aid in the decision-making process. Preliminary recommendations were presented to the Parks Commission to be reviewed and revised. From this, the preferred plans were further revised and presented at an open house for public comment.

For proper completion of the Comprehensive Outdoor Recreation Plan update, direction came from the Parks Commission presentation and the Public Survey. Revisions to individual green space and park area plans and revisions to the estimates of probable cost were completed and incorporated into the final CORP. Research was completed to identify potential funding sources for park improvements. The existing CORP text was revised and updated to reflect these new recommendations. The final Comprehensive Outdoor Recreation Plan was organized to be a more graphic document to provide a valuable planning tool for the future development of Waterloo's Park system.

## SUMMARY OF PAST CORP PLAN

The first plan completed by the Department of Natural Resources in 1972, inventoried the supply of recreation areas and evaluated their adequacy. Recommendations for action to eliminate those deficiencies were outlined. The 1972 plan was subsequently updated in 1979, 1988, 1996, 2001, 2008, and 2017. Whereas many of these recommendations have since been implemented, the City of Waterloo realizes that several changes have occurred affecting the recreation needs within the community. The Parks Commission, Community Survey and the newly created position of Parks Coordinator are incorporated into the new plan.

This report is not only an update of the first seven plans, but also includes some considerations not previously discussed. The plan begins with definitions of types of recreation areas and proceeds to an inventory of Waterloo's current supply of recreation areas and standards for evaluating their adequacy. Comparison of existing park acreage, facilities, and locations with those needed in the community is the basis for identifying deficiencies, which should be corrected. The concluding section consists of recommendations for action to eliminate present deficiencies, it is hoped that this coverage and organization of the plan content will provide a clear framework for community efforts to meet daily outdoor recreation requirements, protect resources and provide a more desirable community environment.

# DESCRIPTION OF THE PLANNING REGION

## Historic / Social

Waterloo has an interesting heritage and unlike many communities has been able to maintain many of the nineteenth and early twentieth century residential and commercial buildings. These buildings are relatively unaltered, and the overall quality of a rural village is well preserved. To date, the city has undertaken only minor historic preservation efforts. The Wisconsin State Historical Society has established a downtown historical district and a copy of the National Register report can be obtained at Waterloo's City. Secondly, due to the hard work of many Waterloo citizens, Waterloo's Carousel has too been inducted into the Wisconsin State Historical Society. Fortunately, a local historical society has been formed and has purchased the old St. Joseph's Church, which has been converted into a museum to display local history. Another effort underway is the continued indexing system designed to trace the history of the community.

## Population Projections

From 1972 to 1980, Waterloo experienced a slow but steady increase in residents. Since 1980, the city grew to 2,712 in 1990 and a 3,259 population in 2000. As of 2017 the City of Waterloo population is 3,371 residents. Based on current economic trends, it is projected that the population of Waterloo will reach 3,835 by the year 2015. This projection is based on the continued implementation of current zoning and subdivision regulations dictating residential densities.

## Population Projections 2022-2028

Year: 2022 - 3,540 / 2028 - 3,636

# OUTDOOR RECREATION/NATURAL RESOURCES INVENTORY

The following are descriptions of natural resource areas available to residents of Waterloo for recreational purposes.

## Garman Nature Preserve

The Dr. J.S. Garman Nature Preserve is a unique place that provides public access to a 40-acre wooded tract within the City of Waterloo. The Garman Nature Preserve's woodlands extend west and south of the property for a total wooded area of 54.2 acres. The preserve is located on one of the highest hills in northwestern Jefferson County, at over 980 feet in elevation. The northwest hillside is particularly steep with slopes of over 35 percent for short distances.

The Preserve has two unique features making it a special landscape, not only for the City of Waterloo, but also for Jefferson County. The first feature has more than twenty Indian burial mounds, located along the eastern ridgeline of the drumlin within the Preserve. Indian burial mounds are protected by the Wisconsin Burial Sites Law. These mounds are a sacred site for Native Americans and may still contain burials. Jefferson County intends to work with the Ho-Chunk Nation to stabilize and preserve the mounds and to create educational opportunities on Native American culture and the Indian burial mounds. The second feature is the yellow giant hyssop (*Agastache Nepetoides*), a plant species on the Wisconsin State Threatened list.

Jefferson County is required by law to protect the yellow giant hyssop and cannot destroy plants through construction or activities in the Preserve. The yellow giant hyssop is a savanna indicator species, meaning it is

usually found in areas that once supported a savanna ecosystem. Remnant savanna communities are extremely rare today. Many parts of Jefferson County were covered with savanna or oak openings prior to the mid-1800s.

### **Mauneshia River**

The Mauneshia River is a 33.5-mile-long tributary of the Crawfish River in south-central Wisconsin. The Mauneshia winds through The City of Waterloo, creating many opportunities for urban and natural water recreation within the city limits.

### **Glacial Heritage Area**

The Glacial Heritage Area is a coordinated series of parks, preserves, wildlife, natural areas, and other conservation lands within Jefferson County. These lands are linked together to nearby cities and villages through various types of trail networks. These networks, also called “string and pearls”, will provide readily accessible opportunities for residents and visitors to positively utilize the environment through activities such as hiking, wildlife observation, fishing, paddling, hunting, camping, cross country skiing, riding horses, and participation in other nature-based activities.

### **Waterloo DNR Wildlife Area/Holzhueter State Park**

The wildlife area is approximately one mile east of the City of Waterloo in northwestern Jefferson County and southwestern Dodge County. Encompassing approximately 4,000 acres, the Waterloo DNR Wildlife Area and Holzhueter State Park offer a diverse range of vegetative habitat types. These habitat types include open water marsh, sedge meadow, fens (including a state natural area), lowland and upland hardwoods, some native prairie, and extensive Shrub Carr ecosystem.

# OUTDOOR RECREATION FACILITY INVENTORY

Below is an inventory of all the outdoor recreation facilities available to the residents of Waterloo.

## **City Parks and School Facilities**

### **Firemen's Park - 500 Park Avenue**

**Classification:** Community Park

**Size:** 60 acres

**Parking:** Off-street

**Amenities:** Central stadium style adult and youth baseball field, youth baseball and softball fields, connections to Maunsha River, bike path, disc golf, playground, private pavilions, storage buildings, restroom buildings, concession buildings, basketball courts, natural playgrounds, Historic Carousel, natural parking, oak lawns, yard waste refuse storage, water fountains and walking trails.

### **Waterloo Regional Trailhead - 760 McKay Way**

**Classification:** Neighborhood Park

**Size:** 2.5 acres

**Parking:** Off-street

**Amenities:** Twenty-seven car parking lot and two Handicap parking stalls, providing connections to the Garman Nature Preserve. Warming Room, Wi-Fi, men's and women's bathrooms, covered deck.

**Upgrades:** Playground Area

### **Morrison Field - 127 Minnetonka Way**

**Classification:** Neighborhood Park

**Size:** 4.1 acres

**Parking:** On-street/off-street

**Amenities:** Soccer fields with goals, on-street parking and small parking lot, memorial sign, lawn seating, porta-potty and open lawn park space.

**Upgrades:** Football goal posts added, paved parking lot, concession stand, bathrooms, shelter, playground and bike/walking trail connecting Hwy 19 to Morrison field up to Minnetonka Way and the Indian Hills Nature Area.

### **Veteran's Memorial Park - 113 E. Madison Street**

**Classification:** Special Use Park

**Size:** 0.25 acre

**Parking:** On-street

**Amenities:** Central downtown gathering space with covered performance stage, refurbished Maunsha Business Center, war memorial, limestone clad seat wall, water fountain and ornamental plantings.

### **Youker Park - 291 Mills Street**

**Classification:** Nature/Conservation Area

**Size:** 5 acres

**Parking:** On-street/off-street

**Amenities:** Memorial stones, eight car parking lot, bike path, Maunsha River access, Mill Pond native planting restoration, and mown native trails.

**Upgrades:** Disc Golf and Dog Park

**DeYoung Farms – 500 McKay Way**

Classification: Nature/Conservation Area

Size: 5 acres

Parking: On-street/off-street

Amenities: Memorial stones, bike & walking path, native planting restoration, and mown native trails.

**Riverside Park – 203 E. Madison Street**

Classification: Neighborhood Park

Size: 1 acre

Parking: Off-street

Amenities: Seven car and connections to downtown Waterloo and Youker Park, river walk and picnic area.

**Fox Park – 720 W. Madison Street**

Classification: Neighborhood Park

Size: 2 acres

Parking: Off-street

Amenities: Twenty car parking lot with two Handicap parking stalls, river walk, sand volleyball court, kayak launch, playground area, restrooms with changing rooms, basketball court/ice skate area, splash pad and sheltered picnic area.

**St. John Lutheran School – 413 E. Madison Street**

Classification: School Park

Size: 2 acres

Parking: Off-street

Amenities: Asphalt surface games, play structures, backstops, and large mowed recreation field.

**Holy Family School & Parish – 205 Milwaukee Avenue**

Classification: School Park

Size: 2 acres

Parking: Off-street

Amenities: Asphalt surface games, play structures, backstops, and large mowed recreation field.

**Waterloo Public School – 865 N. Monroe Street**

Classification: School Park

Size: 10 acres

Parking: Off-street

Amenities: Structured football stadium with track, lighted tennis courts, baseball field, exercise/fitness course, open lawn practice fields and large play structures.

**Future City Parks**

**Indian Hills Nature Area – 127 Minnetonka Way**

Classification: Nature/Conservation Area

Size: 11.1 acres

Parking: On-street

Amenities: Slightly restored native wooded area with limited mulch walking paths

### **South Side Park – 905 Julia Way**

Classification: Neighborhood Park

Size: 2.5 acres

Parking: Off-street

Amenities: Twenty car and two Handicap parking, picnic shelter, bathrooms, baseball/softball field, basketball court, walking and biking trail, playground, and Skate Park.

## **Waterloo Area Parks and Recreational Areas**

### **Garman Nature Preserve**

Classification: County Park

Size: 80 acres

Parking: Off-street

Amenities: Wooded area with invasive species, groomed mulch walking paths, entry sign, interpretive signage, Indian mounds and eight space paved parking lot, restrooms and covered picnic area with tables.

### **Holzhueter Farm Conservation Park**

**Classification:** State Park

**Size:** 175 acres

**Parking:** Off-street

**Amenities:** Wooded area with invasive species, groomed mulch walking paths, entry sign, interpretive signage, and bike paths.

### **Waterloo Wildlife Area**

**Classification:** County Park

**Size:** 4000 acres

**Parking:** Off-street

**Amenities:** Diverse range of habitat types. These habitat types include open water marsh, sedge meadow, fens (including Holzhueter State Park) lowland and upland hardwoods, some native prairie and extensive Shrub Carr.

# ACCESSIBILITY FOR PERSONS WITH DISABILITIES

The City of Waterloo's recreation facilities have limited accessibility for the handicapped, although some improvements have been made at Firemen's Park. Planned improvements to city facilities need to include accessibility criteria to meet the needs of residents, as well as the Americans with Disabilities Act (ADA) requirements.

## OUTDOOR RECREATION NEEDS STANDARDS

The National Recreation and Park Association (NRPA) have outlined standards for evaluating a community's park system by comparing the developed open space of park and recreation areas to the community's population. The NRPA suggests that as a minimum, a park system be composed of an overall or "core" system of 6.25 to 10 acres per 1,000 populations. The park system is further defined by park classifications.

Mini Park  $\frac{1}{4}$  -  $\frac{1}{2}$  acre / 1,000 population

Neighborhood Parks 1 - 2 acres / 1,000 population

Community Parks 5 - 8 acres / 1,000 population

Core Park System 6.25 - 10 acres / 1,000 population

The standards outlined by the NRPA are intended to be used as a planning guide. Each community has different and unique parklands and opportunities. In Waterloo, the "core" parkland system exceeds 10 acres/1,000 populations, primarily due to Fireman's Park 60 acres size. However, one large park does not satisfy all of a community's parkland needs. A well-balanced park system incorporates a variety of park types and sizes to serve the community.

# RECOMMENDATIONS FOR OUTDOOR RECREATION PROVISIONS

Park and outdoor recreation facilities serve more purposes than to solely provide a physical aspect that fills up the park and open spaces. Creating awareness, developing programs and activities, coordination between user groups and city staff, budgeting and procuring funding and everyday upkeep of the park and open spaces are crucial behind the scenes activities needed to ensure long term use and sustainability of a communities open spaces for future generations. The following are recommended additions for the current park programming and facilities operations.

- Increase community and user group involvement
- Work with local animal groups and veterinarian clinics to preserve and upgrade dog park on the south side of Fireman's Park/Youker Park
- Collaborate with McKay Nursery to investigate the expansion of the existing pedestrian path system through the nursery grounds
- Invite and encourage local Scout Groups to participate in park activities and operations and identify potential Eagle Scout projects to improve the park and outdoor spaces of Waterloo
- Develop and organize an annual Maunasha River clean up
- Create a Parks and Recreation Department that consolidates the operations, oversight and programming of all Waterloo parks and its citizens
- Increase teamwork and collaboration among Waterloo committees and agencies (Parks Commission, Friends of Waterloo Firemen's Park, Public Works, WYSO, etc.)
- Continue to find revenue for annual allocation for park and open space improvements in the Waterloo Capital Improvement Budget in Fund 225
- Create a parkland policy for all new developments
- Increase public awareness of the park system and programs through Identity/Way Finding Program
- Continue the pursuit of the Remnant Lands Projects which would reduce maintenance of smaller city owned out lots by transferring ownership to adjacent property owners or programming green space for active use or plantings of native species



# ACTION PROGRAM

Some improvements, as recommended in past Recreation Plans, have been implemented, particularly those related to Firemen's Park and the Waterloo Regional Trailhead. Others are still being considered as future community action. A strategic action plan with desired implementation items, timeline and budget should be developed to prioritize program facilities & improvements. Below is a discussion of recommendations made for existing, planned, and proposed recreation sites in Waterloo.

## **Existing Recreation Sites:**

### **Firemen's Park**

- Develop master plan and strategic improvement plan
- Develop programs and events to bring the community together and facilitate community engagement

### **Waterloo Regional Trailhead**

- Design and locate appropriate signage for the Trailhead and Park
- Fundraising for park improvements
- Educational opportunities

### **Morrison Field**

- Morrison Way street and parking improvements
- Bleacher and spectator improvements
- Field improvements
- Restrooms at Morrison Way
- North side pavilion, parking and play structure
- Pedestrian path through park

### **Veteran's Memorial Park**

- Improvements to Maunasha Business Center
- Connection to city parking lot
- Improvements to existing memorial and stage

### **Youker Park**

- Mowing of interpretive path
- Improve and expand street parking
- Design and implement interpretive nodes
- Design and build bridge connection to City Hall

### **DeYoung Farms**

- Clearing and grubbing of invasive plants
- Connecting paths to internal mulch path
- Path grading and re-mulching improvements
- Design and implement interpretive nodes Design and implement park entrance signs

### **Fox Park**

- River improvements through grants
- Future use will be a park to include shelter, bathroom facility, kayak launch and splash pad
- Signage welcoming visitors to Waterloo with kiosk

### **Riverside Park**

- River improvements through grants
- Future use will be a park to include picnic area, river walk connecting downtown Waterloo and Youker Park/Firemen's Park
- Signage welcoming visitors to Waterloo with kiosk describing historic Waterloo

## **EXPANSION OF PARKS PROGRAM**

The neighboring needs analysis suggests that Waterloo should both improve existing park and playgrounds and expand park facilities. Recommendations for neighborhoods that require the greatest amount of additional land for outdoor recreation are as follows:

### **Future Recreation Sites:**

#### **Indian Hills Nature Area**

- Clearing and grubbing of invasive plants
- Connecting paths to internal mulch path
- Path grading and re-mulching improvements
- Design and implement interpretive nodes
- Design and implement park entrance signs

#### **South Side Park**

- Parking area connecting to Julia Way
- Future use will be a park to include shelter, bathroom facility, basketball court, playground & baseball field
- Walking path connecting to Waterloo Regional Trailhead

### **Signage**

Signage of the park and recreation sites is one portion of the park program that needs attention. To increase local awareness, all parks should be signed. Names of proposed parks should be descriptive of the natural environment of the specific site designated. Signs should be constructed of a rustic material and should be uniform in design throughout the City of Waterloo. Directional signs from major highways would also be helpful those visiting the City of Waterloo.

# OPERATIONS AND MAINTENANCE

Provisions for sufficient land areas and park facilities are important to a community. Even more important, however, is the need to maintain existing areas and park equipment. Waterloo's parks department should establish a regular schedule of park surveillance and inspection. The following items to be considered are:

1. Trash removal
2. Litter
3. Broken play apparatus
4. Mowing and trimming
5. Hazards
6. Maunasha River bank and bottom cleanup
7. Vandalism prevention

## FUNDING PROGRAMS

Possible sources of funding available include, but are not limited to, Wisconsin State Agencies such as the Department of Natural Resources (DNR), Wisconsin Economic Development Corporation (WEDC), Department of Transportation (DOT), Wisconsin Housing and Economic Development Authority (WHEDA), Wisconsin Conservation Corp. (WCC), and State Historical Society.

Financing tools are also available at the city level that may be implemented, such as:

- Special tax district, tax incremental financing, special assessments, or special charges and fees.

## SUMMARY

The City of Waterloo recognizes that recreation is essential to the general welfare and happiness of its citizens. The scope of Waterloo's present recreation program indicates that the city has accepted the responsibility to provide for its citizens recreational needs.

The proposed program is ambitious and will require considerable expenditures. However, many improvements and modifications are within the community's financial limitations. Community leaders must establish priorities and for agreed-upon goals. When the community desires major site improvements, it is suggested that it work closely with the Department of Natural Resources Recreation Grant Programs to secure financial assistance.

The city should update its outdoor recreation plan to accommodate the ever changing community needs and desires. Continuous planning and plan revisions every five years will guarantee Waterloo's ability to meet the outdoor recreation needs of its citizens and help to improve the aesthetic value and program standards for the already attractive community.

City of Waterloo Recreation Area Inventory/Analysis 1/30/2023

PARK AMENITIES

WATERLOO AREA RECREATION OPTIONS

	Banquet Facility / Tavern	Indoor Shelter	Outdoor Shelter	Restroom Facility	Playground Area	Picnic Area	Baseball Field	Softball Field	Open Green Space	Tennis Court	Basketball Court	Volleyball Court	Football / Soccer Field	Hiking / Walking Trails	Biking Trail	Kayak/Canoe Area	Camping / RV Area	Geocaching	Sledging Hill	Disc Golf	Fishing	Hunting	Running Track	Pool / Splash Pad	Ice Skating	Skate Park	Dog Park	Scenic View	Disability Accessible	Comments	
<b>WATERLOO RECREATION AREAS</b>																															
Firemen's Park	X	X	X	X	X	X	X	X		X	X	X	X	X	X	X	X	X	X	X							X	X			
Waterloo Regional Trailhead		X	X	X	X	X		X						X	X			X							X			X	X		
Morrison Field			X	X	X	X		X				X	X	X												X		X			
Veteran's Memorial Park			X			X											X											X			
Youker Park								X					X	X	X						X							X			
Fox Park			X	X	X	X					X		X	X	X		X				X			X	X			X	X		
Riverside Park			X			X							X	X	X		X				X							X	X		
St. John Lutheran School					X	X	X	X		X																					
Holy Family School & Parish					X	X		X		X								X													
Waterloo Public School					X	X	X	X	X	X	X	X	X					X				X					X				
<b>UNDEVELOPED RECREATION AREAS</b>																															
DeYoung Farms			X			X		X					X	X			X											X			
South Side Park			X	X	X	X		X		X			X	X			X													X	
Indian Hills Nature Area						X		X					X	X			X											X			
Public Power Park			X	X	X	X							X	X	X		X				X							X	X		
<b>AREA RECREATION AREAS</b>																															
Garman Preserve				X		X							X															X			
Holzhueter State Park						X		X					X	X														X			
Waterloo Wildlife Area						X		X					X		X						X	X						X			

# Waterloo, Wisconsin City Parks



\*\*Park Icons in Yellow are future planned amenities and not yet built or established\*\*

**Firemen's Park**  
500 Park Avenue

Restrooms, Playground, Picnic Area, Picnic Shelter, Banquet Facility, Carousel, Dog Park, Pool/Splashpad, Camping, RV Parking, Kayak/Canoe, Hiking/Walking, Fishing, Geocache, Hunting, Biking, Baseball/Softball Fields, Basketball Court, Volleyball Court, Soccer Field, Tennis/Pickelball, Disc Golf, Skate Park, Sledding, Cross Country Ski, Ice Skating, School, Handicap accessible, Scenic View

2 Miles

**Waterloo Trailhead**  
760 McKay Way

Restrooms, Playground, Picnic Area, Picnic Shelter, Banquet Facility, Carousel, Dog Park, Pool/Splashpad, Camping, RV Parking, Kayak/Canoe, Hiking/Walking, Fishing, Geocache, Hunting, Biking, Baseball/Softball Fields, Basketball Court, Volleyball Court, Soccer Field, Tennis/Pickelball, Disc Golf, Skate Park, Sledding, Cross Country Ski, Ice Skating, School, Handicap accessible, Scenic View

1 Mile

**Morrison Field**  
127 Minnetonka Way

Restrooms, Playground, Picnic Area, Picnic Shelter, Banquet Facility, Carousel, Dog Park, Pool/Splashpad, Camping, RV Parking, Kayak/Canoe, Hiking/Walking, Fishing, Geocache, Hunting, Biking, Baseball/Softball Fields, Basketball Court, Volleyball Court, Soccer Field, Tennis/Pickelball, Disc Golf, Skate Park, Sledding, Cross Country Ski, Ice Skating, School, Handicap accessible, Scenic View

**Veterans Memorial Park**  
113 E. Madison Street

Restrooms, Playground, Picnic Area, Picnic Shelter, Banquet Facility, Carousel, Dog Park, Pool/Splashpad, Camping, RV Parking, Kayak/Canoe, Hiking/Walking, Fishing, Geocache, Hunting, Biking, Baseball/Softball Fields, Basketball Court, Volleyball Court, Soccer Field, Tennis/Pickelball, Disc Golf, Skate Park, Sledding, Cross Country Ski, Ice Skating, School, Handicap accessible, Scenic View

**Youker Park**  
291 Mills Street

Restrooms, Playground, Picnic Area, Picnic Shelter, Banquet Facility, Carousel, Dog Park, Pool/Splashpad, Camping, RV Parking, Kayak/Canoe, Hiking/Walking, Fishing, Geocache, Hunting, Biking, Baseball/Softball Fields, Basketball Court, Volleyball Court, Soccer Field, Tennis/Pickelball, Disc Golf, Skate Park, Sledding, Cross Country Ski, Ice Skating, School, Handicap accessible, Scenic View

.5 Miles

**DeYoung Farms**  
500 McKay Way

Restrooms, Playground, Picnic Area, Picnic Shelter, Banquet Facility, Carousel, Dog Park, Pool/Splashpad, Camping, RV Parking, Kayak/Canoe, Hiking/Walking, Fishing, Geocache, Hunting, Biking, Baseball/Softball Fields, Basketball Court, Volleyball Court, Soccer Field, Tennis/Pickelball, Disc Golf, Skate Park, Sledding, Cross Country Ski, Ice Skating, School, Handicap accessible, Scenic View

2.5 Miles

**Fox Park**  
720 W. Madison Street

Restrooms, Playground, Picnic Area, Picnic Shelter, Banquet Facility, Carousel, Dog Park, Pool/Splashpad, Camping, RV Parking, Kayak/Canoe, Hiking/Walking, Fishing, Geocache, Hunting, Biking, Baseball/Softball Fields, Basketball Court, Volleyball Court, Soccer Field, Tennis/Pickelball, Disc Golf, Skate Park, Sledding, Cross Country Ski, Ice Skating, School, Handicap accessible, Scenic View

**Riverside Park**  
203 E. Madison Street

Restrooms, Playground, Picnic Area, Picnic Shelter, Banquet Facility, Carousel, Dog Park, Pool/Splashpad, Camping, RV Parking, Kayak/Canoe, Hiking/Walking, Fishing, Geocache, Hunting, Biking, Baseball/Softball Fields, Basketball Court, Volleyball Court, Soccer Field, Tennis/Pickelball, Disc Golf, Skate Park, Sledding, Cross Country Ski, Ice Skating, School, Handicap accessible, Scenic View

**St. John Lutheran School**  
413 E. Madison Street

Restrooms, Playground, Picnic Area, Picnic Shelter, Banquet Facility, Carousel, Dog Park, Pool/Splashpad, Camping, RV Parking, Kayak/Canoe, Hiking/Walking, Fishing, Geocache, Hunting, Biking, Baseball/Softball Fields, Basketball Court, Volleyball Court, Soccer Field, Tennis/Pickelball, Disc Golf, Skate Park, Sledding, Cross Country Ski, Ice Skating, School, Handicap accessible, Scenic View

**Holy Family School & Parish**  
205 Milwaukee Street

Restrooms, Playground, Picnic Area, Picnic Shelter, Banquet Facility, Carousel, Dog Park, Pool/Splashpad, Camping, RV Parking, Kayak/Canoe, Hiking/Walking, Fishing, Geocache, Hunting, Biking, Baseball/Softball Fields, Basketball Court, Volleyball Court, Soccer Field, Tennis/Pickelball, Disc Golf, Skate Park, Sledding, Cross Country Ski, Ice Skating, School, Handicap accessible, Scenic View

**Waterloo Public Schools**  
865 N. Monroe Street

Restrooms, Playground, Picnic Area, Picnic Shelter, Banquet Facility, Carousel, Dog Park, Pool/Splashpad, Camping, RV Parking, Kayak/Canoe, Hiking/Walking, Fishing, Geocache, Hunting, Biking, Baseball/Softball Fields, Basketball Court, Volleyball Court, Soccer Field, Tennis/Pickelball, Disc Golf, Skate Park, Sledding, Cross Country Ski, Ice Skating, School, Handicap accessible, Scenic View

\*\*School districts are listed for information only and may not be open to the public\*\*

## Future City of Waterloo Parks

**South Side Park**  
905 Julia Way

Restrooms, Playground, Picnic Area, Picnic Shelter, Banquet Facility, Carousel, Dog Park, Pool/Splashpad, Camping, RV Parking, Kayak/Canoe, Hiking/Walking, Fishing, Geocache, Hunting, Biking, Baseball/Softball Fields, Basketball Court, Volleyball Court, Soccer Field, Tennis/Pickelball, Disc Golf, Skate Park, Sledding, Cross Country Ski, Ice Skating, School, Handicap accessible, Scenic View

.5 Miles

**Indian Hills Nature Area**  
127 Minnetonka Way

Restrooms, Playground, Picnic Area, Picnic Shelter, Banquet Facility, Carousel, Dog Park, Pool/Splashpad, Camping, RV Parking, Kayak/Canoe, Hiking/Walking, Fishing, Geocache, Hunting, Biking, Baseball/Softball Fields, Basketball Court, Volleyball Court, Soccer Field, Tennis/Pickelball, Disc Golf, Skate Park, Sledding, Cross Country Ski, Ice Skating, School, Handicap accessible, Scenic View

2 Miles

## State/County Parks and Wildlife Area

**Garman Nature Preserve**  
701 Fox Lane

Restrooms, Playground, Picnic Area, Picnic Shelter, Banquet Facility, Carousel, Dog Park, Pool/Splashpad, Camping, RV Parking, Kayak/Canoe, Hiking/Walking, Fishing, Geocache, Hunting, Biking, Baseball/Softball Fields, Basketball Court, Volleyball Court, Soccer Field, Tennis/Pickelball, Disc Golf, Skate Park, Sledding, Cross Country Ski, Ice Skating, School, Handicap accessible, Scenic View

2 Miles

**Holzhueter State Park**  
W7664 Island Road

Restrooms, Playground, Picnic Area, Picnic Shelter, Banquet Facility, Carousel, Dog Park, Pool/Splashpad, Camping, RV Parking, Kayak/Canoe, Hiking/Walking, Fishing, Geocache, Hunting, Biking, Baseball/Softball Fields, Basketball Court, Volleyball Court, Soccer Field, Tennis/Pickelball, Disc Golf, Skate Park, Sledding, Cross Country Ski, Ice Skating, School, Handicap accessible, Scenic View

4.25 Miles

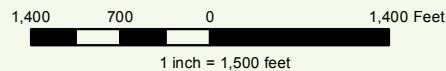
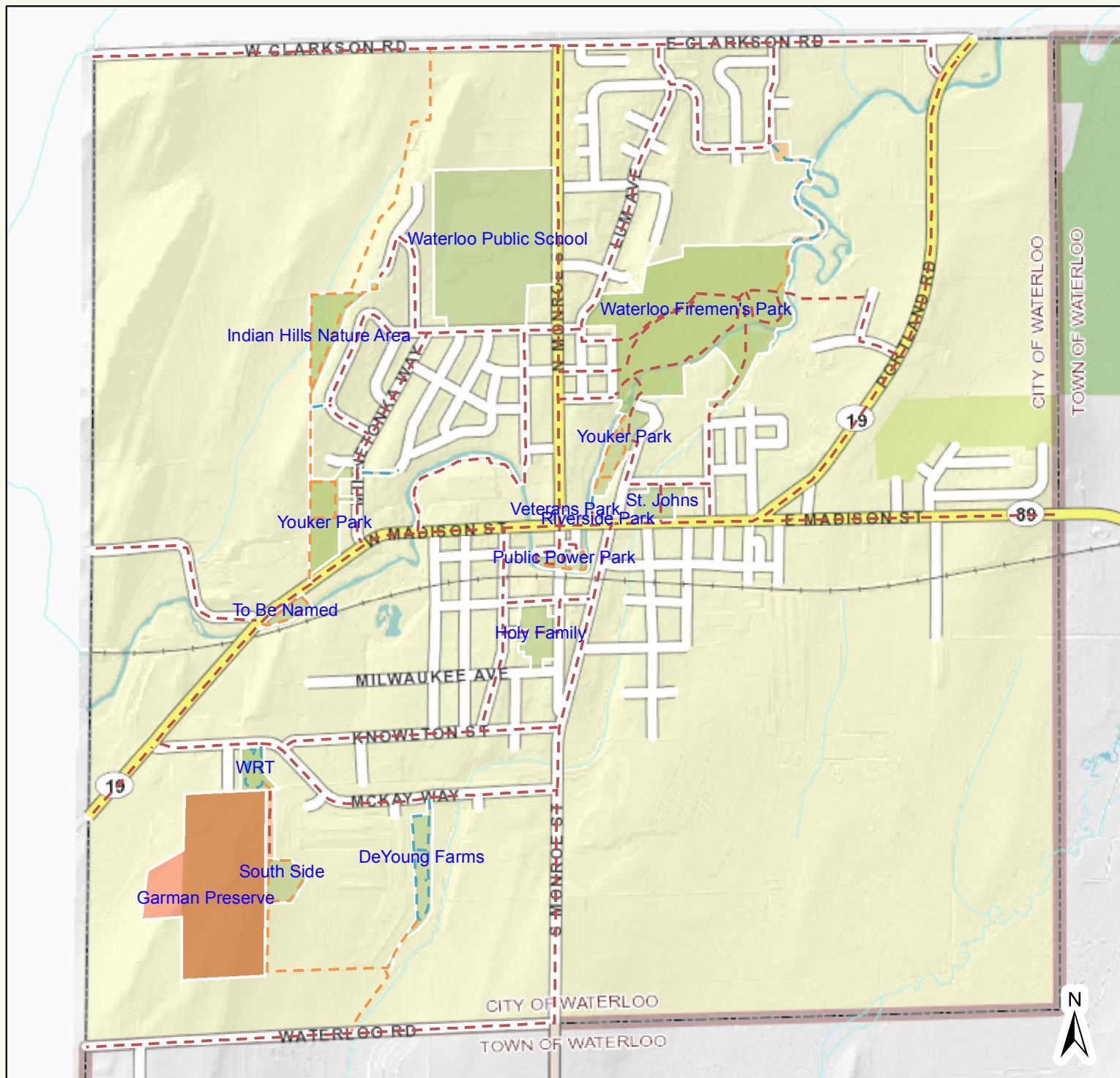
**Waterloo Wildlife Area**  
W8288 Blue Joint Road

Restrooms, Playground, Picnic Area, Picnic Shelter, Banquet Facility, Carousel, Dog Park, Pool/Splashpad, Camping, RV Parking, Kayak/Canoe, Hiking/Walking, Fishing, Geocache, Hunting, Biking, Baseball/Softball Fields, Basketball Court, Volleyball Court, Soccer Field, Tennis/Pickelball, Disc Golf, Skate Park, Sledding, Cross Country Ski, Ice Skating, School, Handicap accessible, Scenic View

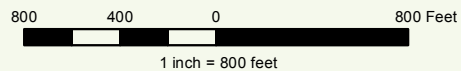
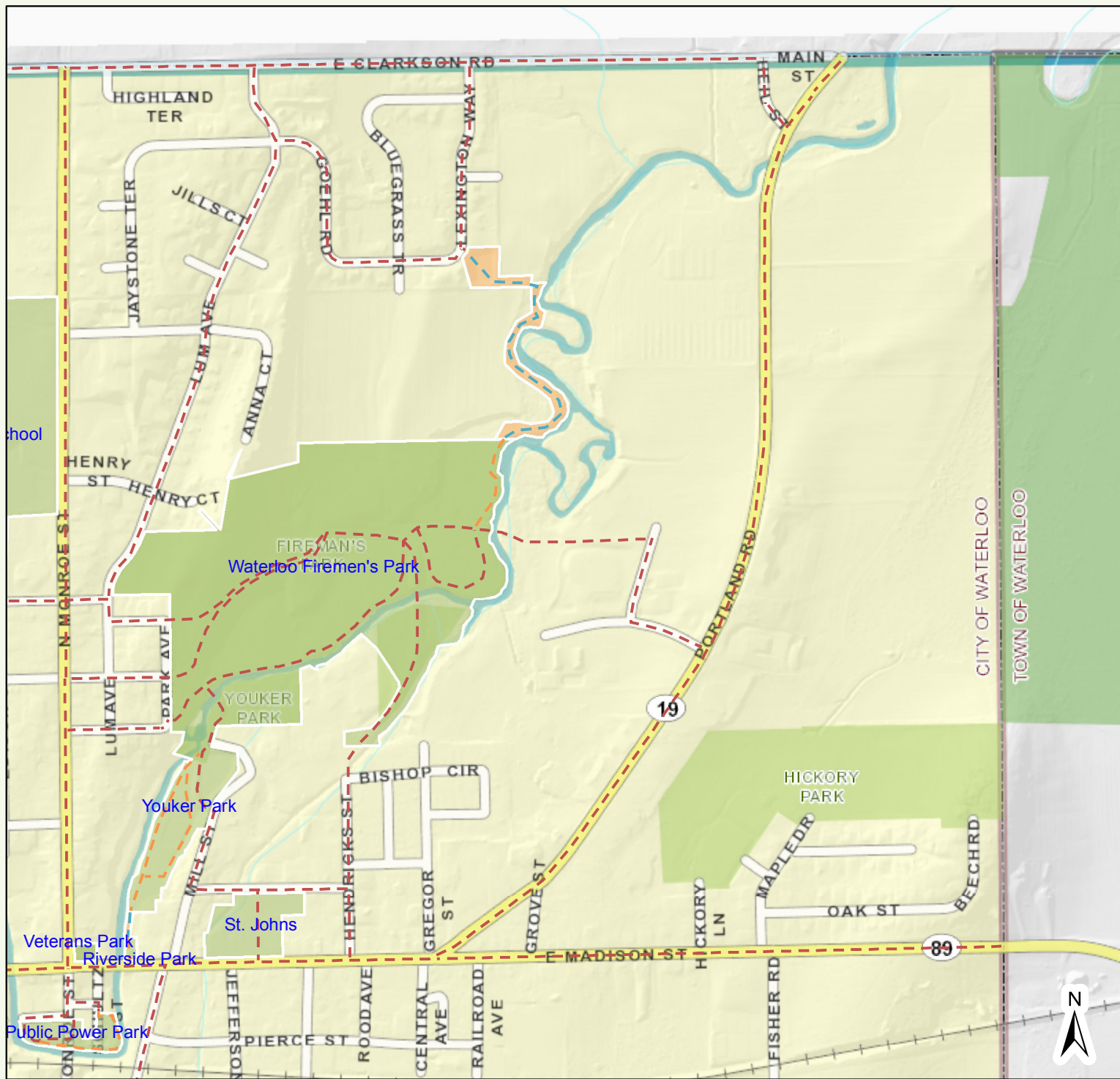
10 Miles

- Restrooms
- Playground
- Picnic Area
- Picnic Shelter
- Banquet Facility
- Carousel
- Dog Park
- Pool/Splashpad
- Camping
- RV Parking
- Kayak/Canoe
- Hiking/Walking
- Fishing
- Geocache
- Hunting
- Biking
- Baseball/Softball Fields
- Basketball Court
- Volleyball Court
- Soccer Field
- Tennis/Pickelball
- Disc Golf
- Skate Park
- Sledding
- Cross Country Ski
- Ice Skating
- School
- Handicap accessible
- Scenic View

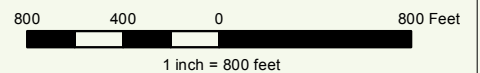
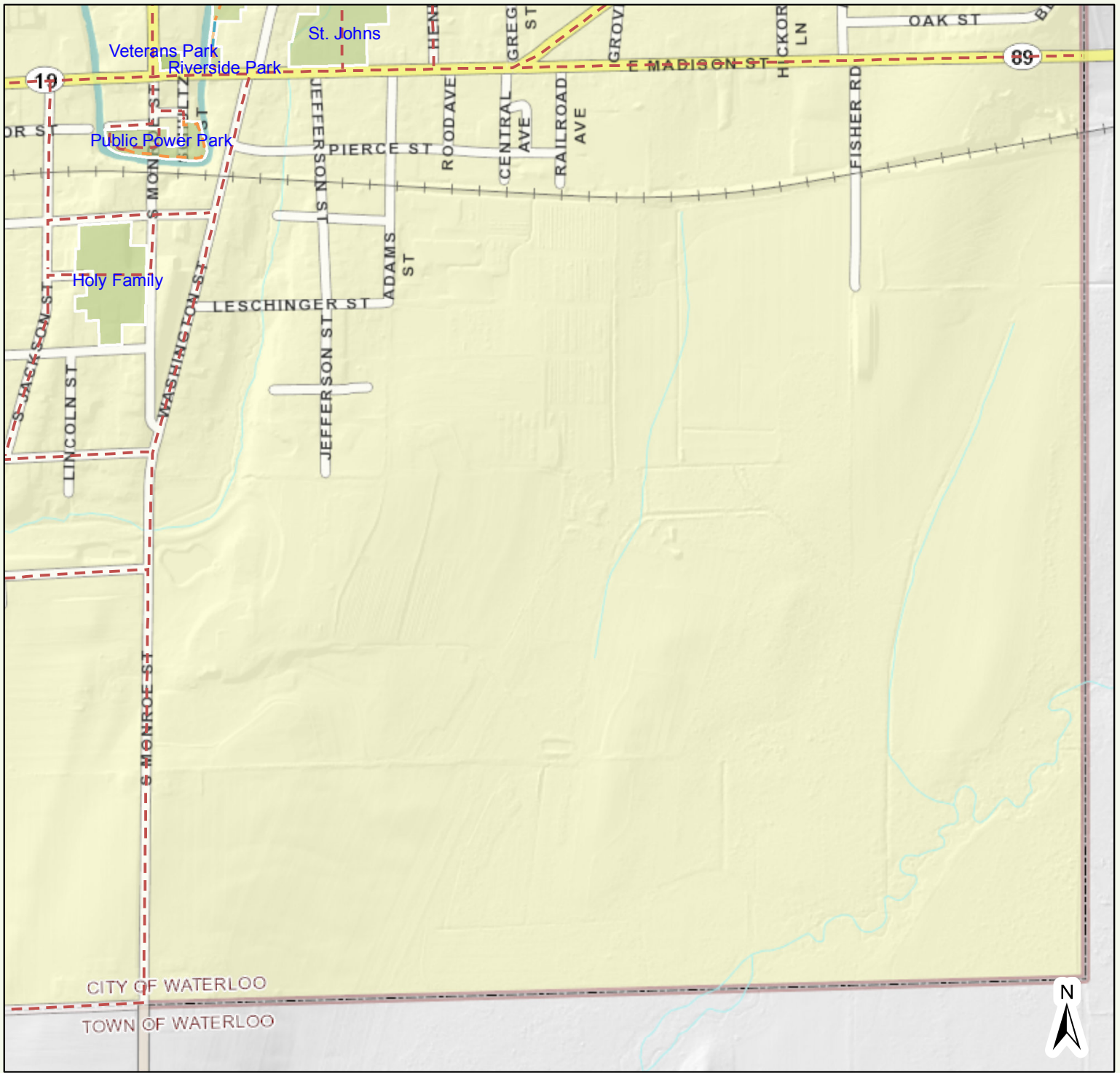
# Jefferson County Land Information



# Jefferson County Land Information

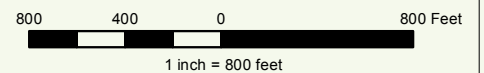
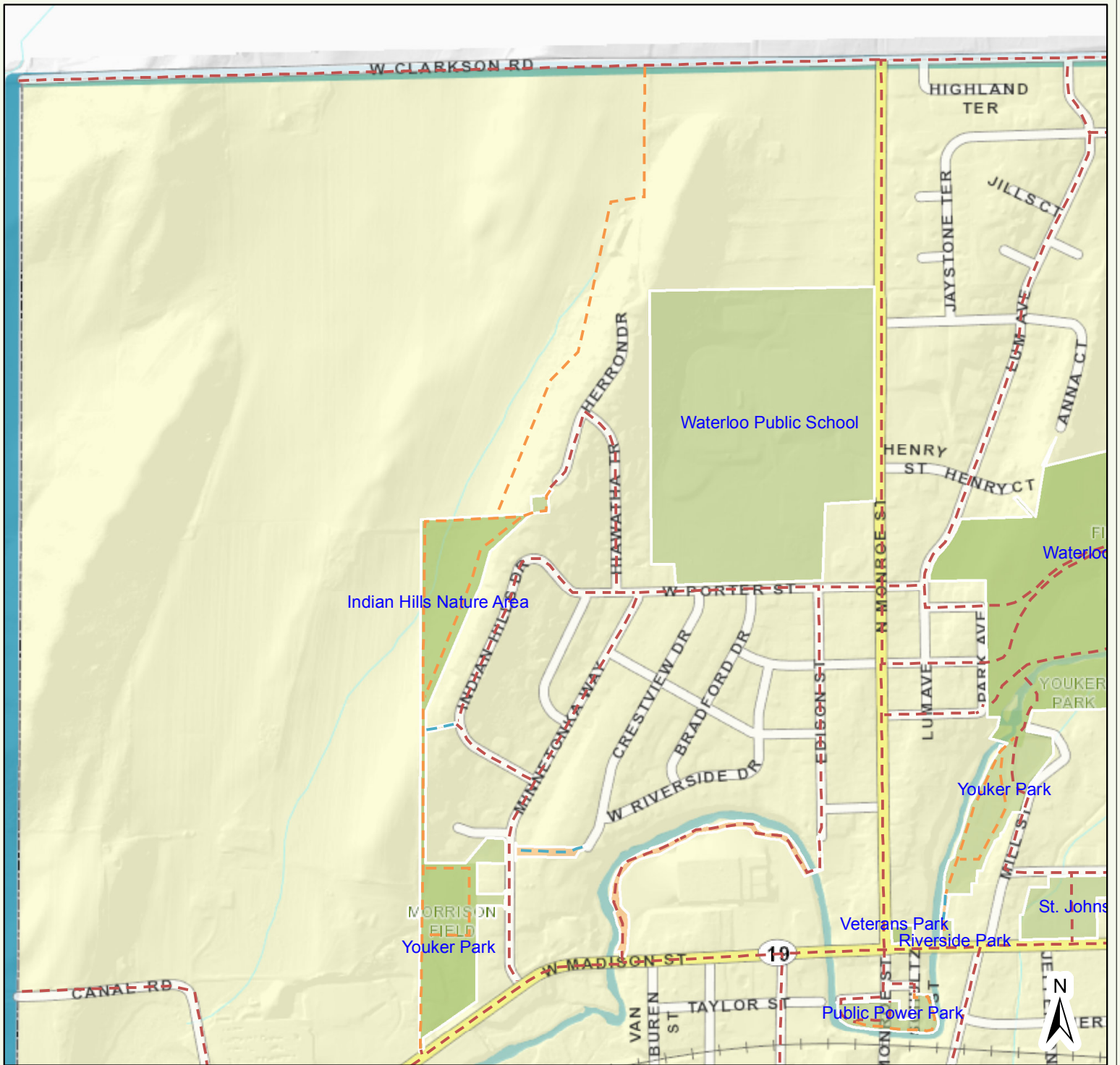


# Jefferson County Land Information

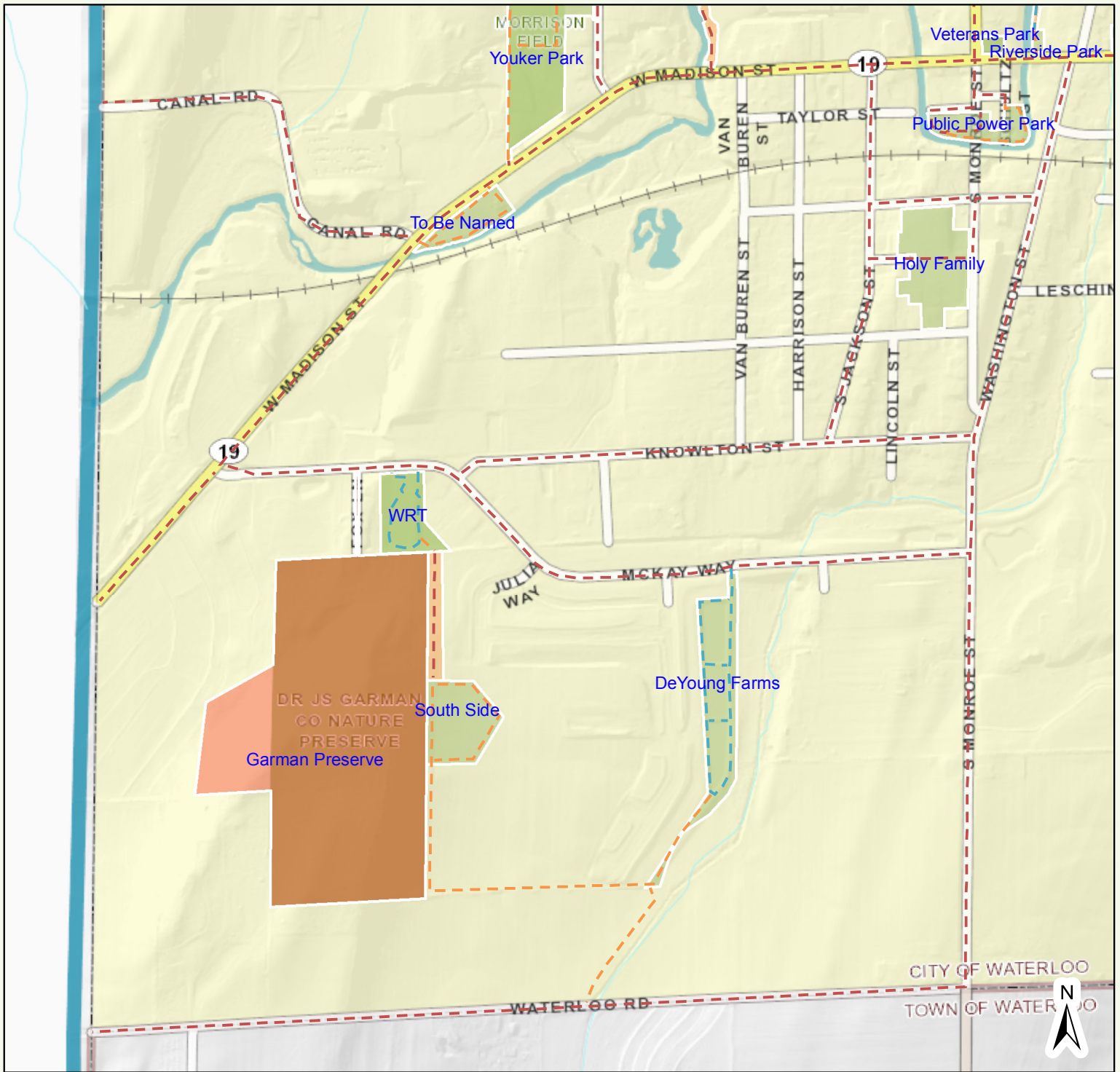




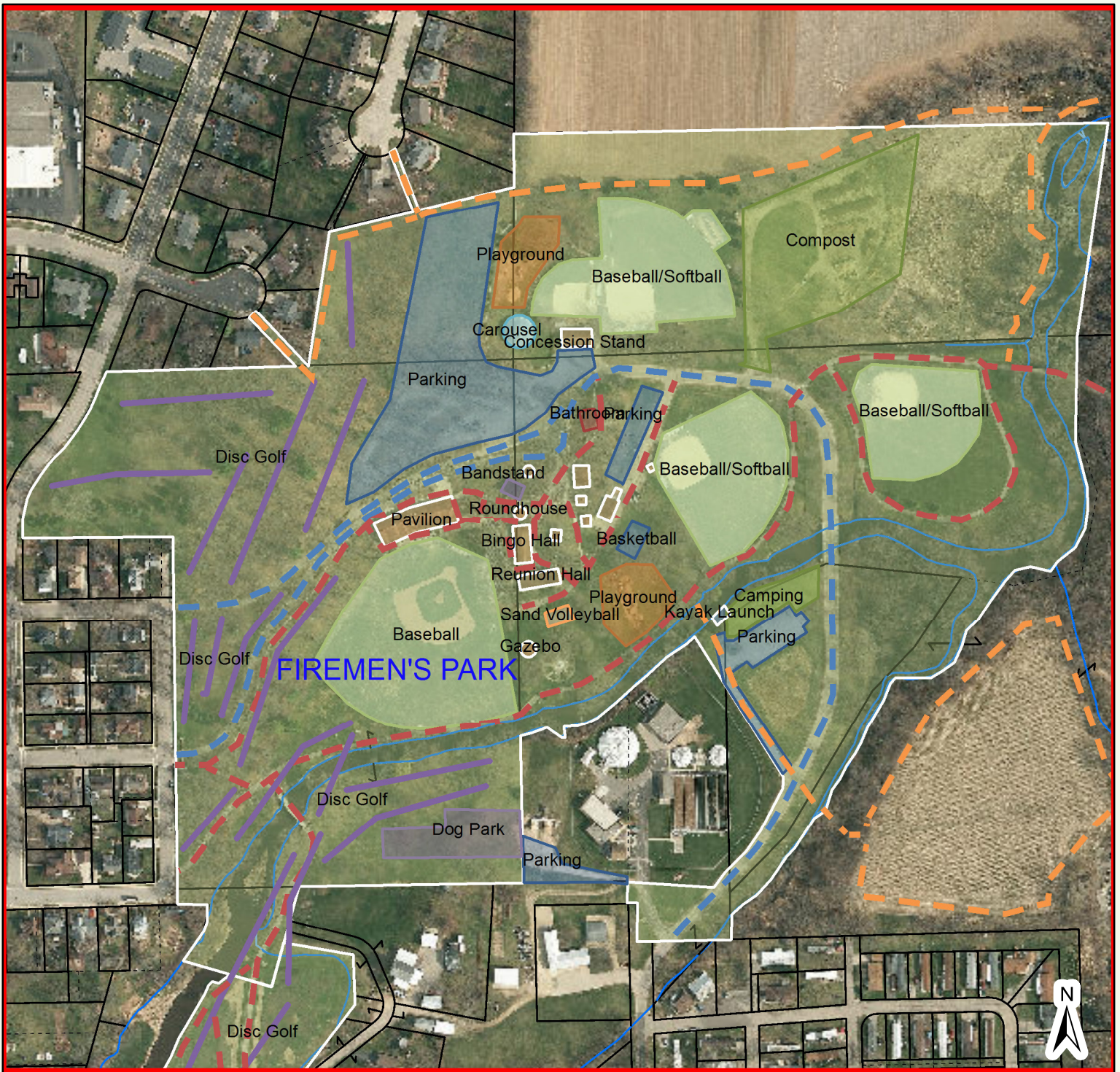
# Jefferson County Land Information



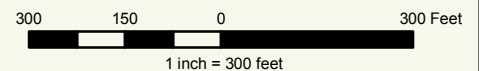
# Jefferson County Land Information



# Jefferson County Land Information



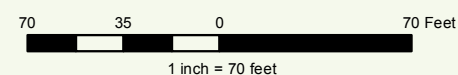
- |                       |                     |               |
|-----------------------|---------------------|---------------|
| Municipal Boundaries  | Section Lines       | Red: Band_1   |
| Property Boundary     | Surface Water       | Green: Band_2 |
| Old Lot/Meander Lines | Map Hooks           | Blue: Band_3  |
| Rail Right of Ways    | Tax Parcels         |               |
| Road Right of Ways    | Streams and Ditches |               |



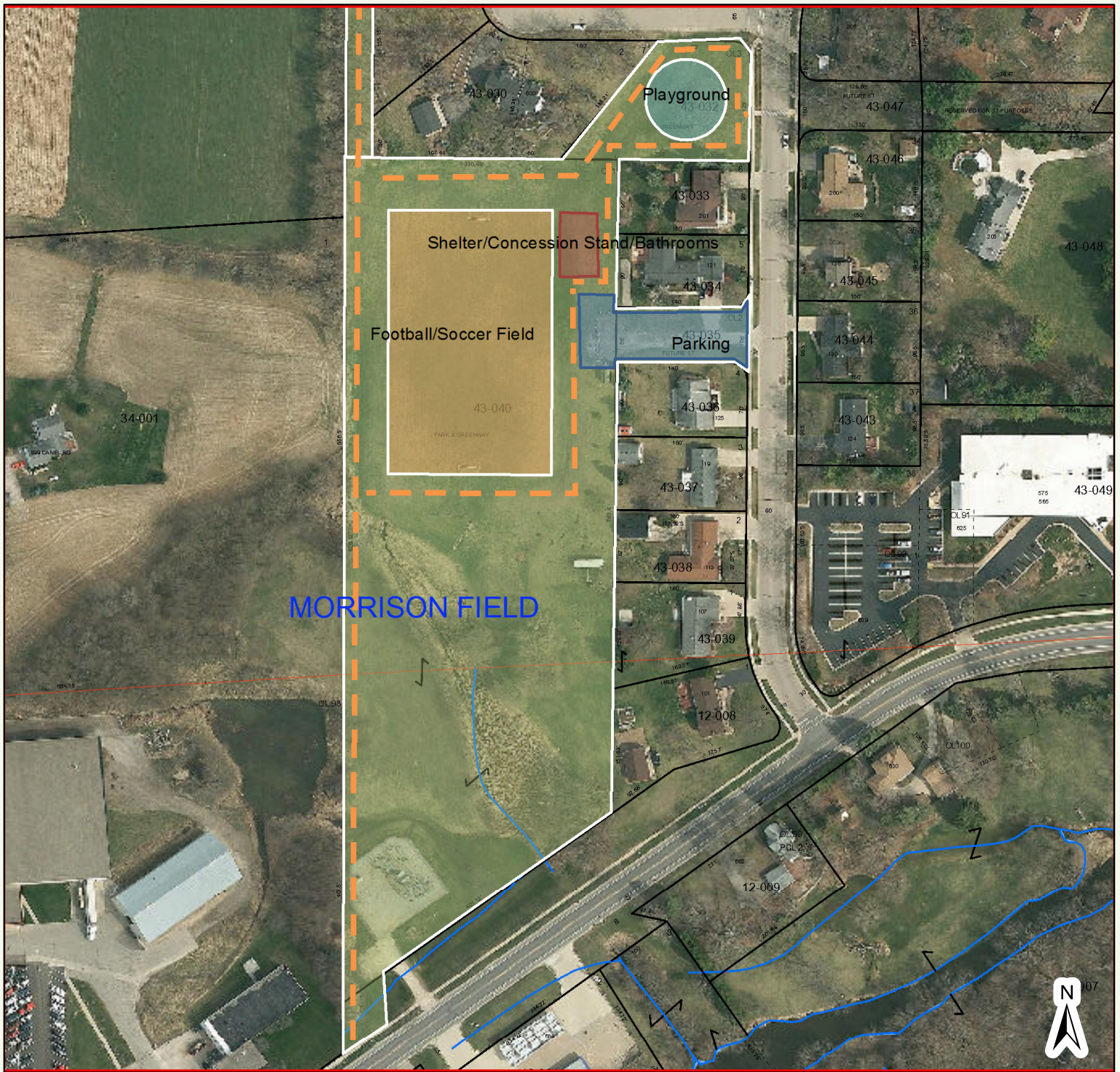
# Jefferson County Land Information




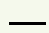











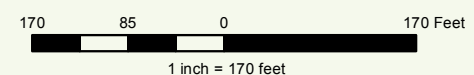
- |                       |                     |               |
|-----------------------|---------------------|---------------|
| Municipal Boundaries  | Section Lines       | Red: Band_1   |
| Property Boundary     | Surface Water       | Green: Band_2 |
| Old Lot/Meander Lines | Map Hooks           | Blue: Band_3  |
| Rail Right of Ways    | Tax Parcels         |               |
| Road Right of Ways    | Streams and Ditches |               |



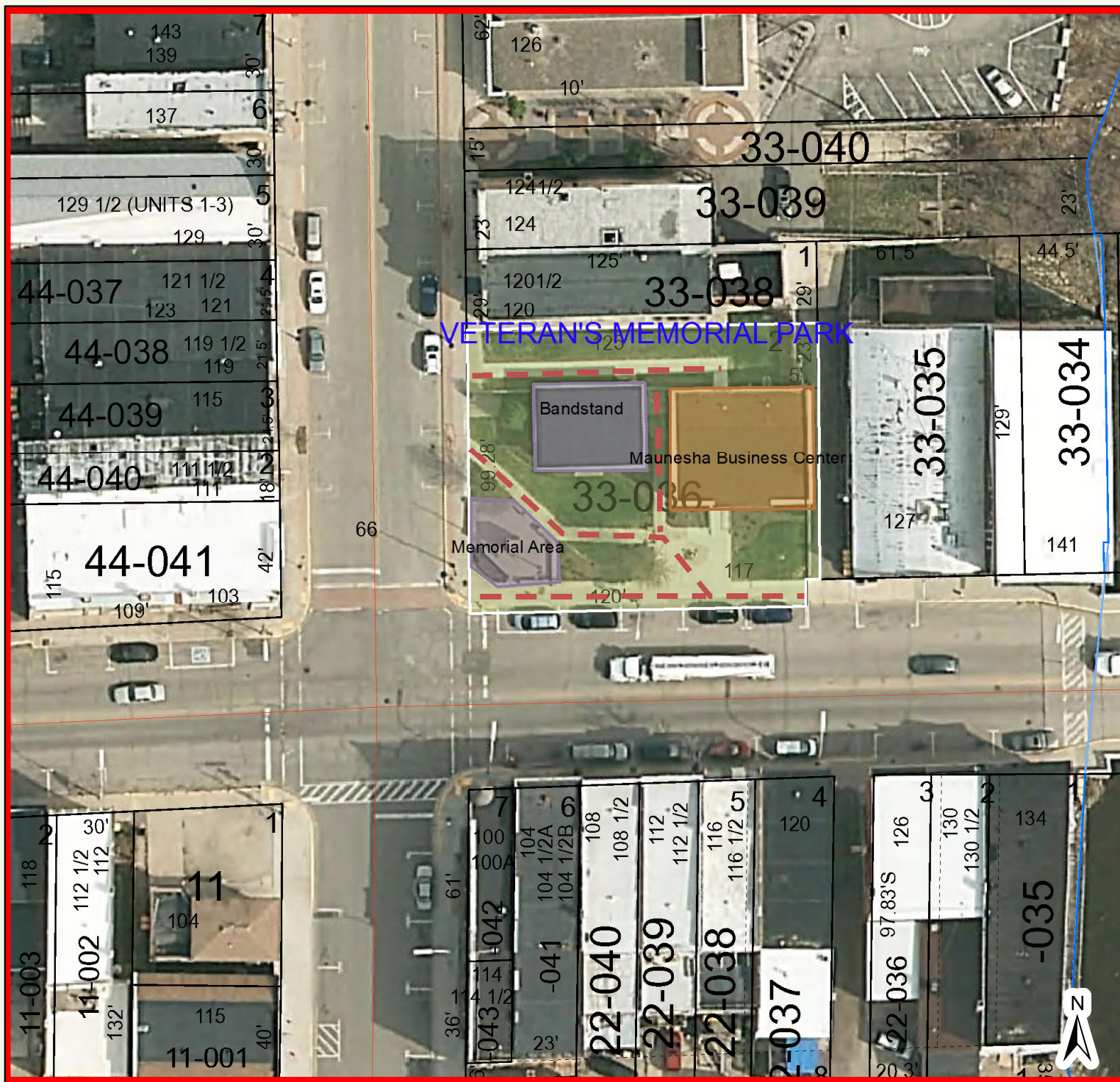
# Jefferson County Land Information



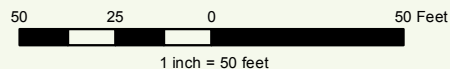
- |  |   |   |
|--|---|---|
|  Municipal Boundaries  |  Section Lines       |  Red: Band_1   |
|  Property Boundary     |  Surface Water       |  Green: Band_2 |
|  Old Lot/Meander Lines |  Map Hooks           |  Blue: Band_3  |
|  Rail Right of Ways    |  Tax Parcels         |   |
|  Road Right of Ways    |  Streams and Ditches |   |



# Jefferson County Land Information




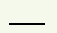
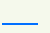










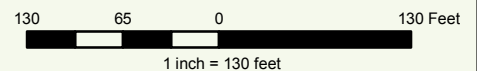
- |  |                       |  |                     |  |               |
|--|-----------------------|--|---------------------|--|---------------|
|  | Municipal Boundaries  |  | Section Lines       |  | Red: Band_1   |
|  | Property Boundary     |  | Surface Water       |  | Green: Band_2 |
|  | Old Lot/Meander Lines |  | Map Hooks           |  | Blue: Band_3  |
|  | Rail Right of Ways    |  | Tax Parcels         |  |               |
|  | Road Right of Ways    |  | Streams and Ditches |  |               |



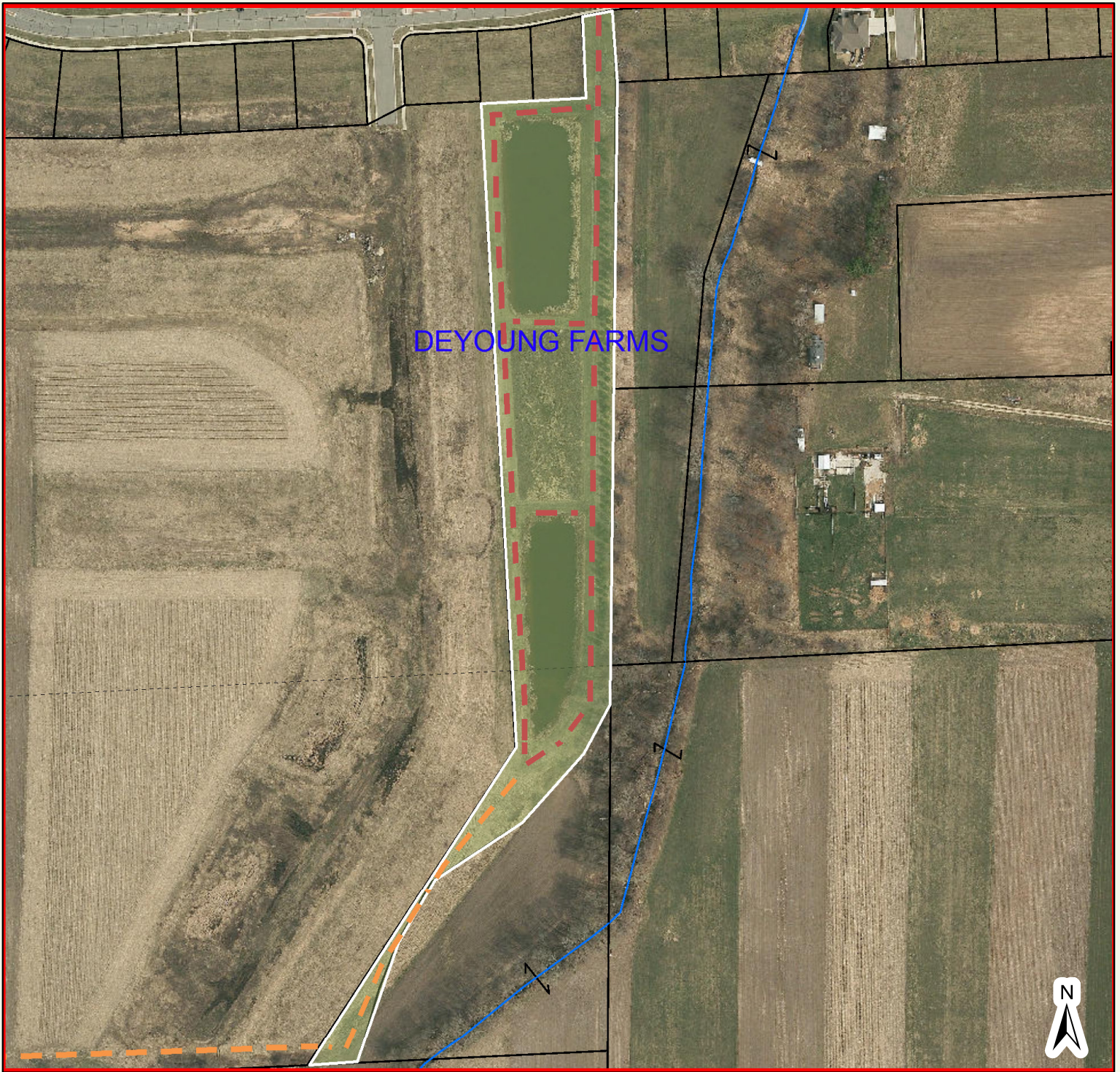
# Jefferson County Land Information













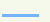


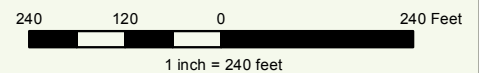
- |  |   |   |
|--|---|---|
|  Municipal Boundaries  |  Section Lines       |  Red: Band_1   |
|  Property Boundary     |  Surface Water       |  Green: Band_2 |
|  Old Lot/Meander Lines |  Map Hooks           |  Blue: Band_3  |
|  Rail Right of Ways    |  Tax Parcels         |   |
|  Road Right of Ways    |  Streams and Ditches |   |



# Jefferson County Land Information



- |  |   |   |
|--|---|---|
|  Municipal Boundaries  |  Section Lines       |  Red: Band_1   |
|  Property Boundary     |  Surface Water       |  Green: Band_2 |
|  Old Lot/Meander Lines |  Map Hooks           |  Blue: Band_3  |
|  Rail Right of Ways    |  Tax Parcels         |   |
|  Road Right of Ways    |  Streams and Ditches |   |





# Jefferson County Land Information

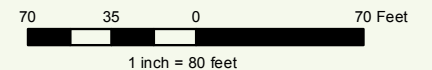


- |  |                       |  |                    |  |                     |  |              |
|--|-----------------------|--|--------------------|--|---------------------|--|--------------|
|  | Municipal Boundaries  |  | Road Right of Ways |  | Tax Parcels         |  | Blue: Band_3 |
|  | Property Boundary     |  | Section Lines      |  | Streams and Ditches |  | Red: Band_1  |
|  | Old Lot/Meander Lines |  | Surface Water      |  | Green: Band_2       |  |              |
|  | Rail Right of Ways    |  | Map Hooks          |  |                     |  |              |



Jefferson County Geographic Information System

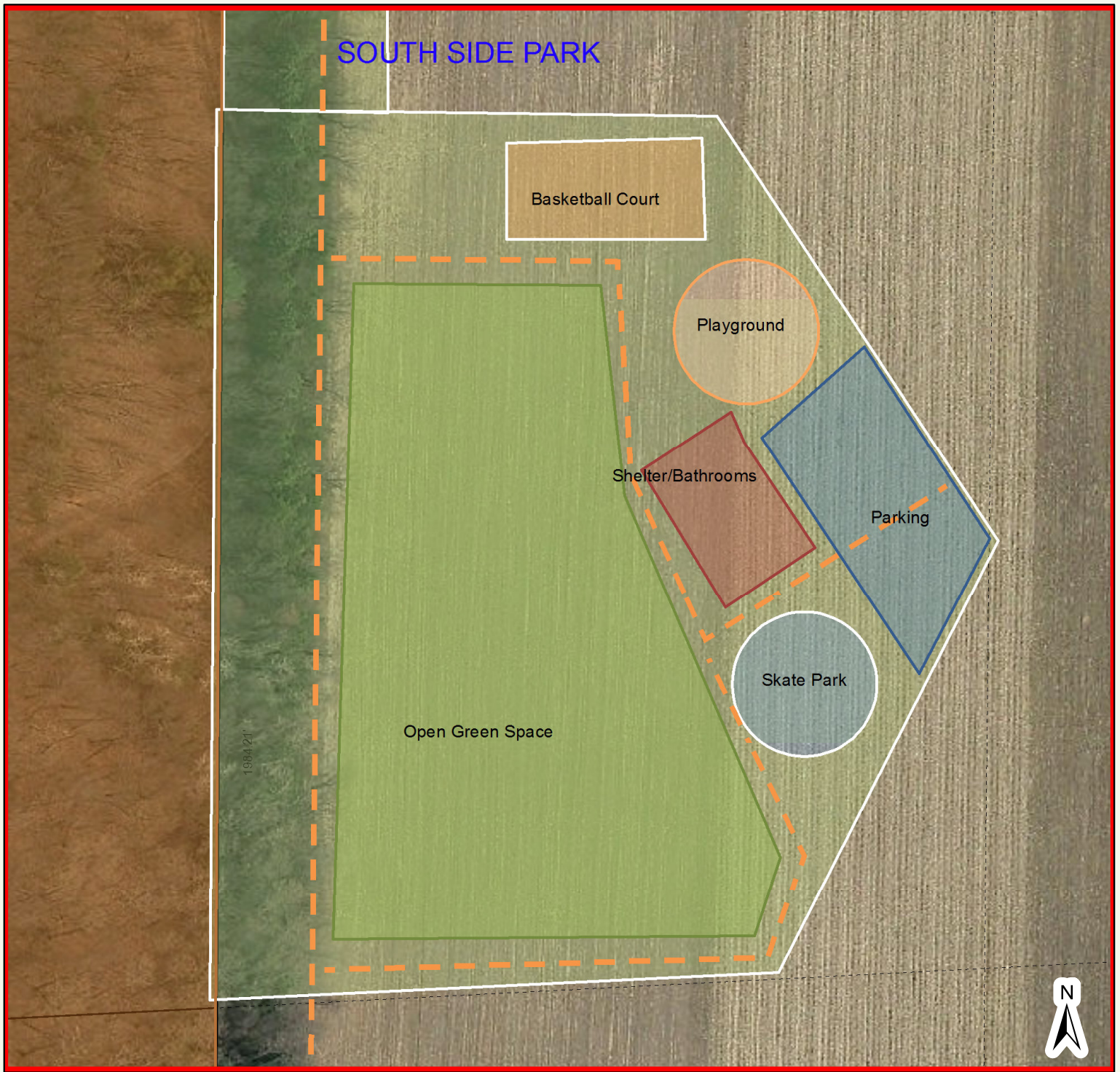
DISCLAIMER: This map is not a substitute for an actual field survey or onsite investigation. The accuracy of this map is limited to the quality of the records from which it was assembled. Other inherent inaccuracies occur during the compilation process. Jefferson County makes no warranty whatsoever concerning this information.



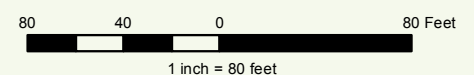
Printed on: November 22, 2016

Author: Public User

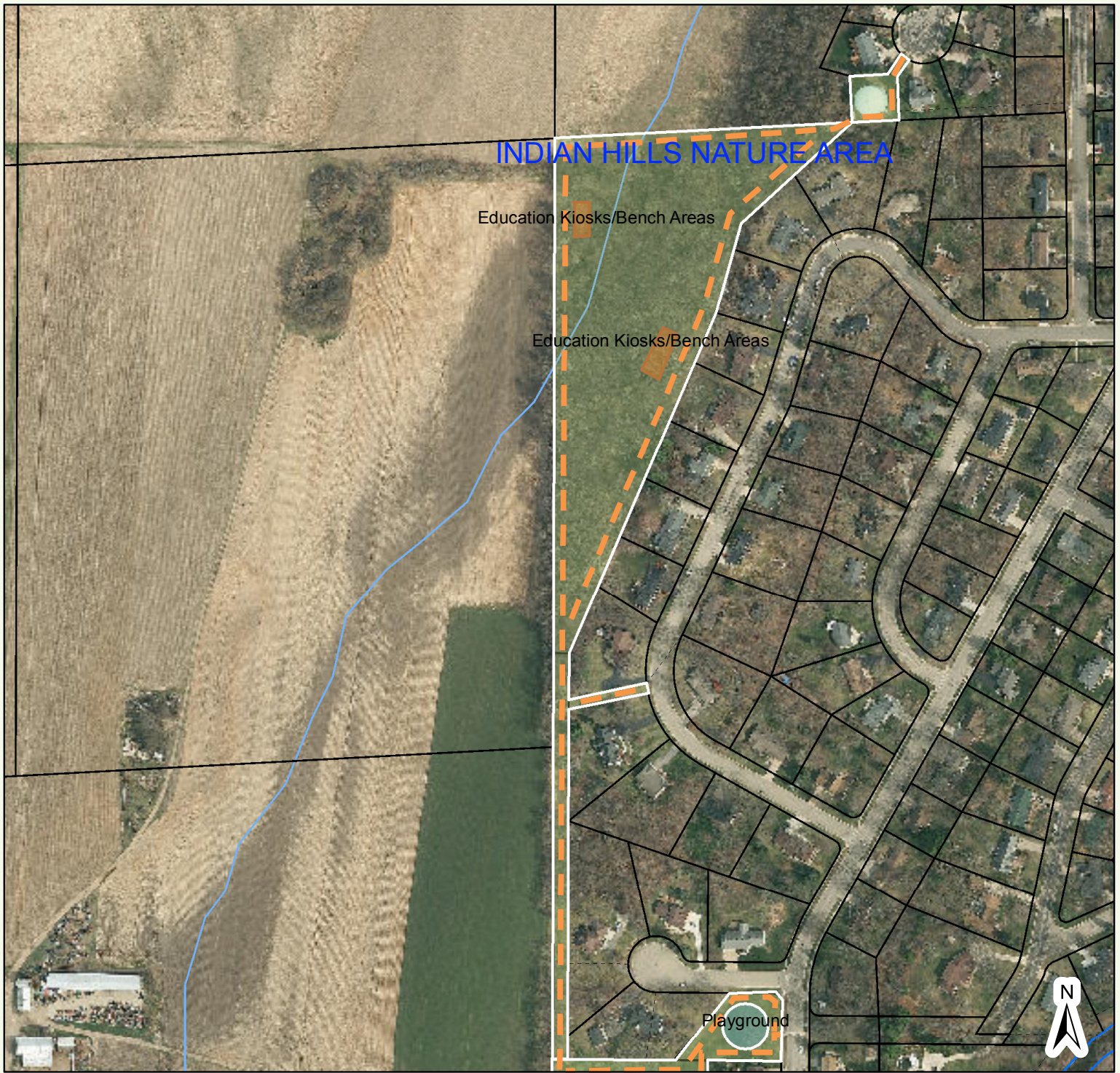
# Jefferson County Land Information



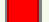









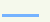


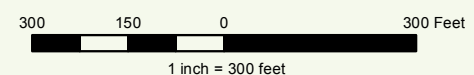
- |                       |                     |               |
|-----------------------|---------------------|---------------|
| Municipal Boundaries  | Section Lines       | Red: Band_1   |
| Property Boundary     | Surface Water       | Green: Band_2 |
| Old Lot/Meander Lines | Map Hooks           | Blue: Band_3  |
| Rail Right of Ways    | Tax Parcels         |               |
| Road Right of Ways    | Streams and Ditches |               |



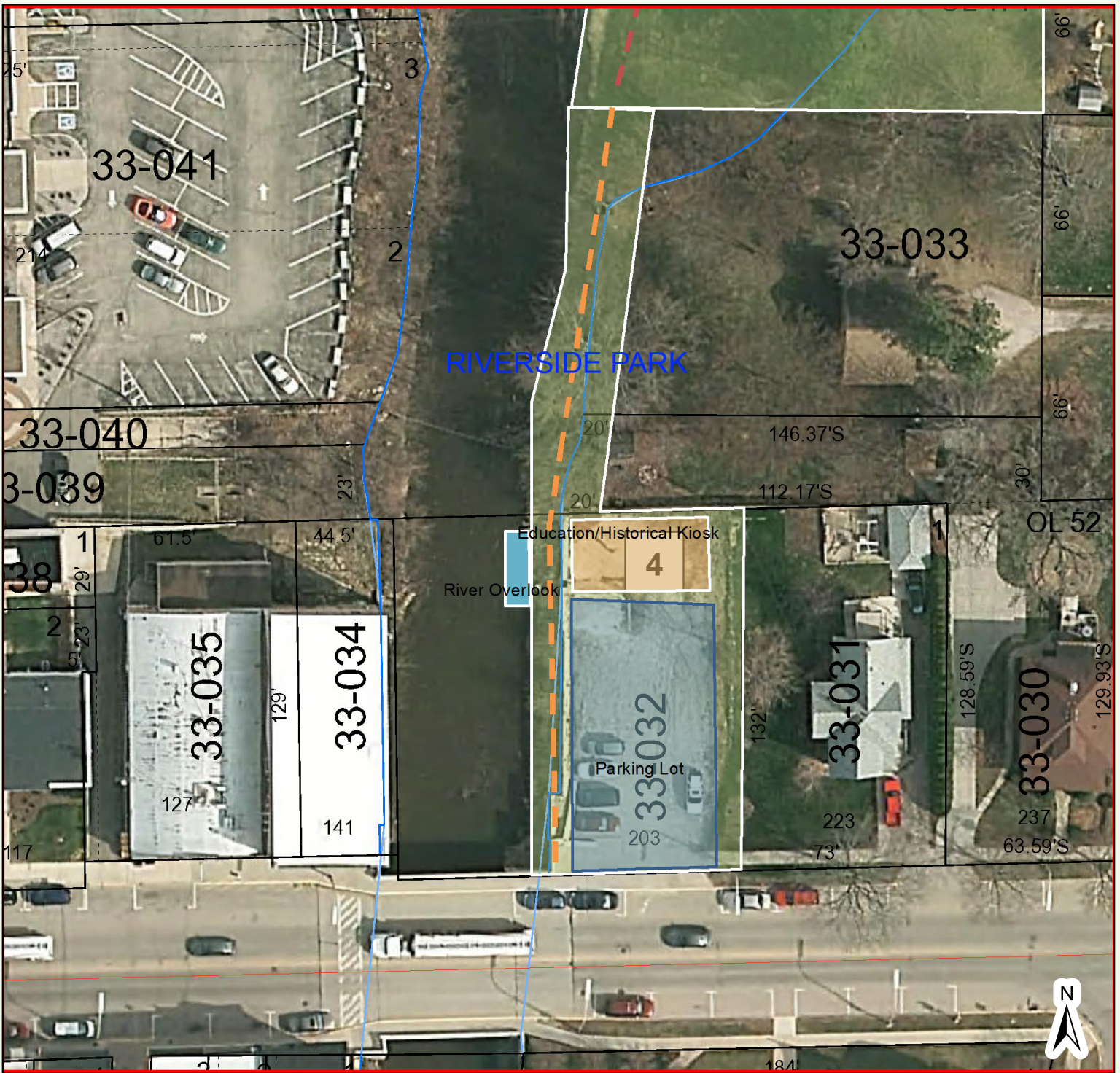
# Jefferson County Land Information



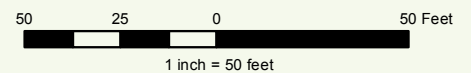
- |  |   |   |
|--|---|---|
|  Municipal Boundaries  |  Section Lines       |  Red: Band_1   |
|  Property Boundary     |  Surface Water       |  Green: Band_2 |
|  Old Lot/Meander Lines |  Map Hooks           |  Blue: Band_3  |
|  Rail Right of Ways    |  Tax Parcels         |   |
|  Road Right of Ways    |  Streams and Ditches |   |



# Jefferson County Land Information



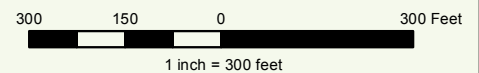
- |                       |                     |               |
|-----------------------|---------------------|---------------|
| Municipal Boundaries  | Section Lines       | Red: Band_1   |
| Property Boundary     | Surface Water       | Green: Band_2 |
| Old Lot/Meander Lines | Map Hooks           | Blue: Band_3  |
| Rail Right of Ways    | Tax Parcels         |               |
| Road Right of Ways    | Streams and Ditches |               |



# Jefferson County Land Information





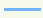





- |                       |                     |               |
|-----------------------|---------------------|---------------|
| Municipal Boundaries  | Section Lines       | Red: Band_1   |
| Property Boundary     | Surface Water       | Green: Band_2 |
| Old Lot/Meander Lines | Map Hooks           | Blue: Band_3  |
| Rail Right of Ways    | Tax Parcels         |               |
| Road Right of Ways    | Streams and Ditches |               |



# Jefferson County Land Information

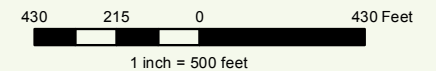


- |  |  |   |  |
|--|--|---|--|
|  Municipal Boundaries  |  Road Right of Ways |  Tax Parcels         |  Blue: Band_3 |
|  Property Boundary     |  Section Lines      |  Streams and Ditches |  |
|  Old Lot/Meander Lines |  Surface Water      |  Red: Band_1         |  |
|  Rail Right of Ways    |  Map Hooks          |  Green: Band_2       |  |



Jefferson County Geographic Information System

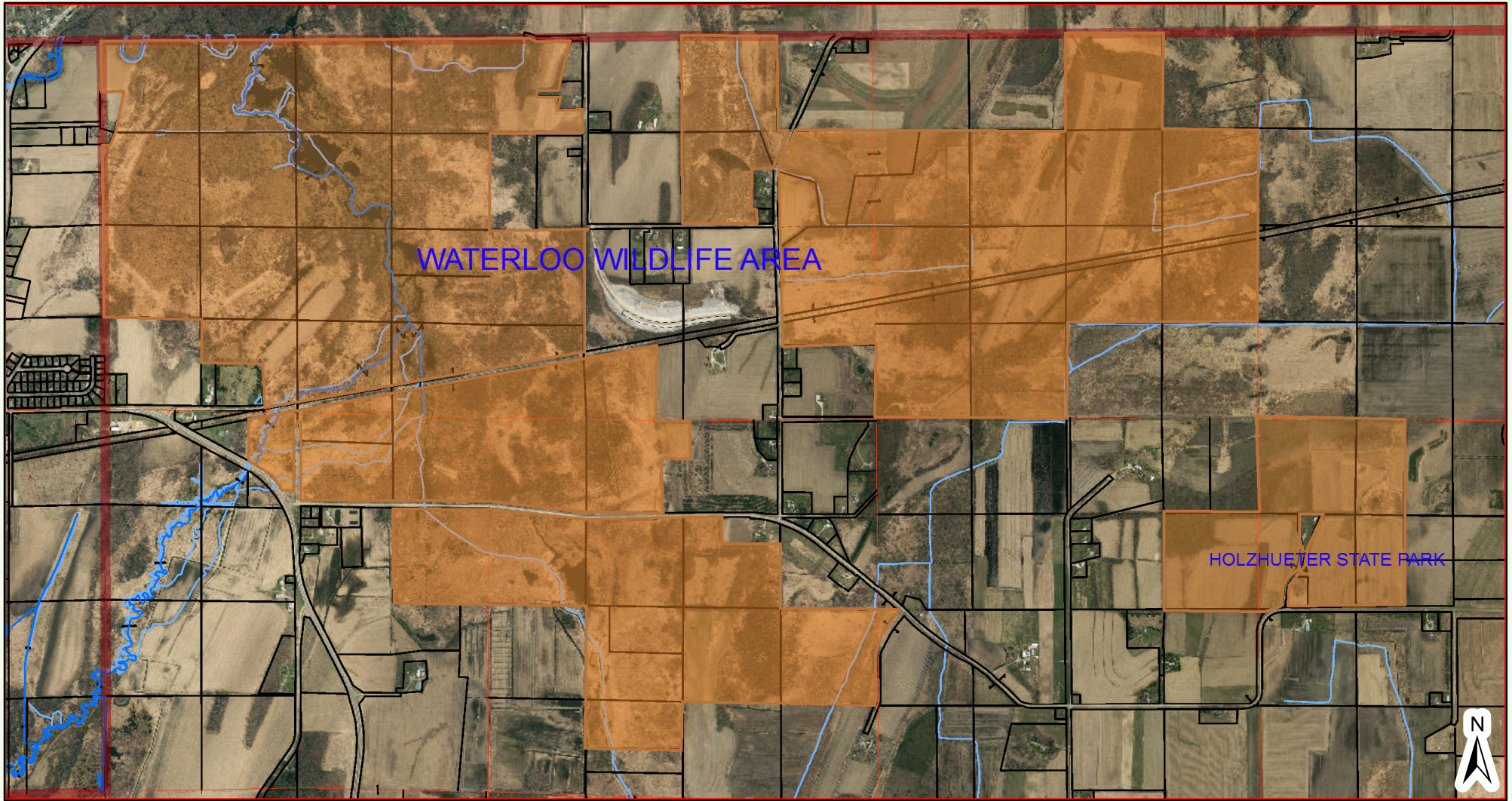
DISCLAIMER: This map is not a substitute for an actual field survey or onsite investigation. The accuracy of this map is limited to the quality of the records from which it was assembled. Other inherent inaccuracies occur during the compilation process. Jefferson County makes no warranty whatsoever concerning this information.





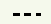





Printed on: December 9, 2016

Author: Public User

# Jefferson County Land Information

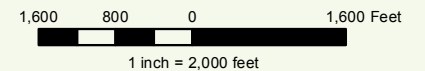


- |  |  |   |  |
|--|--|---|--|
|  Municipal Boundaries  |  Road Right of Ways |  Tax Parcels         |  Blue: Band_3 |
|  Property Boundary     |  Section Lines      |  Streams and Ditches |  |
|  Old Lot/Meander Lines |  Surface Water      |  Red: Band_1         |  |
|  Rail Right of Ways    |  Map Hooks          |  Green: Band_2       |  |



Jefferson County Geographic Information System

DISCLAIMER: This map is not a substitute for an actual field survey or onsite investigation. The accuracy of this map is limited to the quality of the records from which it was assembled. Other inherent inaccuracies occur during the compilation process. Jefferson County makes no warranty whatsoever concerning this information.



Printed on: December 9, 2016

Author: Public User